

651-487-7752 • rosevillelutheran.org

THE TABLE

A QUARTERLY NEWSLETTER FOR THE FRIENDS
AND MEMBERS OF ROSEVILLE LUTHERAN CHURCH

DECEMBER 2022 • JANUARY • FEBRUARY 2023

LET THERE BE NIGHT

Lauren J. Wrightsman, Senior Pastor

Henry Beston is an American writer who wrote, *The Outermost House* (1928). In this collection of essays, Beston writes,

"Our fantastic civilization has fallen out of touch with many aspects of nature, and with none more completely than with night... With lights and ever more lights, we drive the holiness and beauty of night back to the forests and the trees."

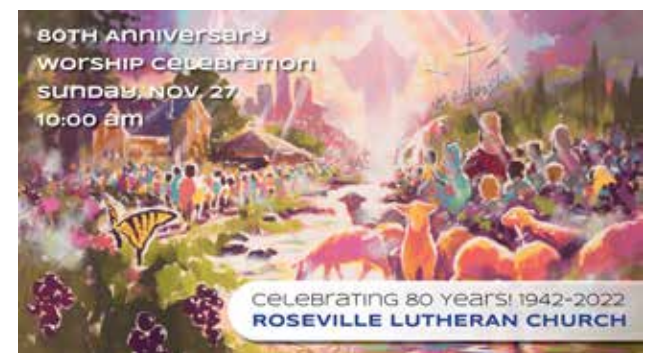
When I think about night, the beauty of night, my mind is pulled back to summer evenings along the shorelines of countless lakes of the BWCA and Quebec where I have pondered the night sky.. I remember looking up into the darkness, not afraid of the dark, but finding within its mystery a sense of peace, a sense of hope. It was there, in the darkness of the night that I discovered, in a multitude of ways, the love of our creator and the joy of God's creation.

Our current age, however, is hostile to night. We shove it back with our lights, drenching our lives with artificial light that dispels the glory of the darkness.

We must remember, however, that much of God's work happens in the night:

- It is night when, in Psalm 23, God walks with us through the valley of the shadow of death
- It is night when the disciples sat with Christ at Gethsemane.
- It is night when Paul and Silas, jailed in Philippi, sang hymns and an earthquake shook the prison loose.
- It is night when the angel of death passed over the land of Egypt.
- It is night when Ruth went to Boaz.
- It is night when the Lord spoke to Mary and Joseph.
- It is night when the world first heard the sound of their savior's cry.
- It is night when the shepherds heard the angelic chorus as they watched their flocks by night.

Maybe I have a new look on the night, simply because there are many nights I find I cannot sleep. I wake, restless and keenly aware that most of the world around me still sleeps.



**ONE Worship Service at 10:00 am
80th Anniversary Sunday, Nov. 27**

REGULAR WORSHIP AT RLC

SUNDAYS AT 9:00 AND 10:30 am

NIGHT continued from Page 1

I have recently learned that my mid-night awakenings replicate an ancient pattern. According to historian A. Roger Ekrich, before the advent of electricity, northern dwellers tended to sleep in two shifts separated by an hour or more of spontaneous wakefulness. The first "sleep" was called "dead sleep" (probably because of the exhaustion of labors during the day). The second "sleep" was called "morning sleep" because one's mind and dreams were turned to the needs of the future day. In the middle, however, was this awakening into the night; which was referred to as a "nightly resurrection." In the words of author John Daniel, *"Freed from daylight distractions, refreshed by a few hours' slumber, a man or woman could lie abed in a condition of easeful contemplation akin to meditation."* (In Praise of Darkness, Daniel).

There is, in each twenty-four hour cycle, an opportunity for "nightly resurrection."

Join us this Advent season as we explore the night together. Not as a place of uncertainty, fear, or worry, but as a place that offers us the gifts of God's hope, peace, joy and love. For it is in the darkness, in the night, that we find ourselves reawakened to the mysteries of a God who is always creating. Always with us and omnipresent in our waking and our sleeping. May we enter into the night with the promise of a resurrection.

Let there be Night

God's blessings to you and yours during this Advent season.



Lauren J. Wrightsman
Senior Pastor

LET THERE BE NIGHT

Marty Wyatt, Associate Pastor

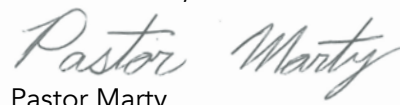
When does night start? Is it at the moment of sunset? When the clock says it is a certain time? Perhaps when the clock says it is time to go to bed? Or maybe night starts at dusk? When does dusk become night? When it is too dark to see in front of you? When the shadows are no longer shadows but have melted into darkness all around you instead?

In the US, we tend to think in absolutes-it is either night or day. And then we go a step further and assign value to each of these things- saying the day is good because of all of the things we can get done and everything that happens during the day. In the same way, we label night as bad because we can't do as much.

Night is a time for rest. Sacred rest. Fulfilling rest. Sabbath rest. Rest that we try to push back and out of our lives, always filling our time with more and more. And while those things we fill our time with are good and worthy things, I wonder if we sometimes allow ourselves to fill up too much of our time with activity and things that keep us endlessly busy in order to distract ourselves from the night-from the rest that we so desperately need. Rest doesn't only come in the night of course, but there seems to be something about the quiet of the night that makes rest easier. If we sleep at night-rest for our bodies, then when do we find rest for our souls? This rest comes when we take Sabbath-intentional time spent resting in God, trusting that the work will get done even if we take a break, and remembering that we don't have to be the ones to do every single thing-remembering that we ourselves are not God. I encourage each of you to wonder and pray about how you might find some restorative Sabbath time in the midst of each day. Perhaps it is 5 minutes by yourself with a cup of coffee or a walk around the block with your dog, or maybe it is a meal with family. Whatever is peaceful and centering for you can be a sabbath moment, and I encourage you to find them and take them.

So let there be night! But also, let there be sacred in-betweens. Between every day and night we have sunsets and sunrises, dawn and dusk, golden hours, and some of the most beautiful times of each day. These sacred moments of transition between night and day can't always be easily categorized as either night or day, and the beautiful thing is that they don't need to be in order to be enjoyed or appreciated. They can simply be loved for what and who they are made to be, just as each of us-God's beloved creation-are made to be loved for what and who we are made to be. For God has made us all in God's image, to be loved and cherished and valued-just as a sunset into a beautiful, restful night.

Christ's Peace,



Pastor Marty



A COMMUNITY UNITED BY GRACE
LOVE GOD • LOVE YOUR NEIGHBOR

LET THERE BE NIGHT

Tori Remer, Pastor of Youth and Young Adult Engagement

October 24 was the holiday Diwali, or the festival of light, and it is celebrated in Hinduism. A couple years ago, I was living in an area where Diwali was celebrated by a majority of the people. In the evenings, I would go for walks around my neighborhood. As the summer turned into fall and the sun began to sink lower (and earlier) in the sky, it grew darker around the neighborhood. What once felt familiar, now seemed different and unexpected. I was warned by my landlord to not go on my walks in the dark. But I noticed nothing had really changed except for the amount of light.

We are taught that the darkness should be something to be feared. There are things that come out at night that do not happen during the day. Even with all of these warnings from others and in my own body, I still walked through the dark. It was in the dark that I could see the houses slowly growing with lights. At first there would be small clay lamps put out along stone fences and gates.

Then there would be strings of lights put up on houses along with big light displays put out in front yards. Then on Diwali, the whole neighborhood transformed and was bathed in light. I no longer had that slight fear of the dark - the one where your hair rises on the back of your neck and your breathing is a little faster. There was so much light that it was as if I was walking outside during the day, and even when I closed my curtains there was still light.

Even in this festival of light, you still needed the darkness to appreciate what the light offers. In our own Advent season, I encourage to see what the darkness offers and acknowledge what comes through when we are without light. The things that come out at night might not be all that bad.



Pastor Tori Remer



WHERE ARE YOU RUNNING TOWARDS?

Rebecca Field, RLC Council President

I have always enjoyed the activity of running. I appreciate the chance to get out in fresh air and put some miles on the running shoes. When my kids were little, I would buckle them into the double running stroller and away we would go, usually to one of the many amazing parks we have here in Roseville. I have probably circled Bennet Lake a hundred times but will never get tired of the beautiful scenery. On my run today (taking advantage of the extension of the beautiful weather that we were blessed to have this October!) I was pondering why it is that I value running so much.



In considering the many different reasons I realized that it comes down to the health benefits and, the visual of this diagram came into my mind (above).

- **Physical Health:** there are the obvious physical benefits from getting your heart rate up and using your muscles to keep you going!
- **Mental Health:** I always find it's a great way to clear my mind and think through those problems that have been troubling me or just gives me time to zone out and listen to the running soundtrack. Usually after a good run, the problems don't seem to be such big issues after all.
- **Spiritual Health:** It may be because being immersed in God's beautiful nature gives me a feeling of appreciation, but I usually end up thinking about the blessings that have been bestowed upon me. I oftentimes will use those runs to connect with God and spend time in prayer.

The song "I Run To You" is one of my favorite ones on my running soundtrack as it is entirely uplifting and has a great beat. It happens to have come from the Making Waves VBS program from this summer (If you have kids who attended I'm sure you know the lyrics already!):

*Whenever I need some answers
God I turn to you
You are my help when I need wisdom
You always see me through*

*To know that you are chasing after me
Makes me want to run to where you are
God you make this journey worth it
I give you all my heart*

*When I don't know what to do
You help me figure it out
God I run to you
When I need a solution
I have no doubt
That I will run to you*

Between work, kids activities, family events, etc. schedules get filled up fast and it can feel like we are just running and running, barely taking time to consider what it is we are running to and for. I find this song recenters my thoughts on where and specifically, who, I should be running to in life.

RUNNING continues on Page 5



RLC Lay Leaders and Staff

Pastors

Lauren Wrightsman, Senior Pastor
Marty Wyatt, Associate Pastor
Tori Remer, Pastor of Youth/Young Adult Engagement
Rolf Olson, Visitation Pastor

Music Ministry

John Helgen, Director
Martha Mutch, Organist
Lori Haaland, Handbell Choirs
Lucas Byl, Worship Leader

Hospitality Ministry

Connie Marchio, Hospitality Manager

Children's Ministry

Vacant, Director of Children's and Family Ministry

Youth and Young Adult Ministry

Tori Remer, Pastor of Youth/Young Adult Engagement

RLC Preschool

Sher Noot, Director
Lori Kristiansen, Preschool Teacher
Rachel Lawson, Preschool Asst. Teacher
Vacant, Preschool Teacher
Katie Gerhz, Preschool Asst. Teacher
Karen Sundeen, Preschool Asst. Teacher

Child Care House

Sher Noot, Director
Laurie Miller-Hedeen, Childcare Teacher
Krystina Eliason, Childcare Teacher
Angie Koeck, Childcare Teacher
Liv Bakken, Childcare Assistant

Ministry Support Staff

Dave Booms, Church Administrator
Laurel Hofeldt, Director of Finance and Data
Diane Sell, Director of Community Engagement
Rebecca Bedner, Director of Development
Daniel Pederson, Communications Manager
Mary Johnson, Receptionist/Admin. Assistant
Vacant, Financial Assistant
Tammy Swanson, Financial Assistant

Endowment Committee

Mike Dolan, Chair
Bill Metzger
Greg Johnson
Sarah Richter
Judy Ekern
Kevin Peterson
Audra Engebretson
Dave Risinger
Carrie Hefte-Hanton

Facilities Ministry

Bob Zismer, Campus Lead
Arlen Rystrom, Building Engineer
Shelton Ingram, Custodian
Greg Saiko, Custodian

Nominating Committee

Dave Werner
Scott Roste
Jan Abell

Congregation Council

Rebecca Field, President
Val Velde, President Elect
Erik Storlie, Vice President
Kris Olsen
Bill Metzger
Linda Hanson
Nancy Brown
Judy Kaufmann
Linda Werner

Ministry Team Chairs

Sharon Swiglo, Adult Ed
Gena Mickley, Children's Ministry Advisory Board
Dave Tetzlaff, Mission & Outreach
Lilian Wassell, Youth & Family

TAX-SMART DONATION STRATEGIES

Laurel Hofeldt, Director of Finance and Data

As 2022 comes to a close, here are a few simple tax-smart donation strategies. These tips have been adapted from Schwab Charitable. The entire article is listed here: www.schwabcharitable.org/maximize-your-impact/tax-strategies. Members are encouraged to consult with their tax professional before acting on this information.

Make a Qualified Charitable Distribution (QCD) of Individual Retirement Account (IRA) assets. Whether itemizing deductions or taking the standard deduction, individuals age 70½ and older can direct up to \$100,000 per year tax-free from their IRAs to charities like Roseville Lutheran Church through QCDs. By reducing the IRA balance, a QCD may also reduce the donor's taxable income in future years, lower the donor's taxable estate, and limit IRA beneficiaries' tax liability.

Use a charitable deduction to help offset the tax liability on a retirement account withdrawal. This strategy may be used by individuals over age 59½ (to avoid an early withdrawal penalty) who will itemize deductions for 2022. As with the above strategy, a withdrawal offers the additional benefits of potentially reducing a donor's taxable estate and limiting tax liability for account beneficiaries.

Bunch two years of contributions into 2022. Some donors may find that the total of their itemized deductions for 2022 will be slightly below the level of the standard deduction. In that circumstance, it could be beneficial to combine or "bunch" 2022 and 2023 charitable contributions into one year (2022), itemize deductions on their 2022 tax returns, and take the standard deduction on 2023 taxes.

Open a Donor-Advised Fund (DAF) account. A DAF is a simple, tax-smart investment solution for charitable giving that gives the donor flexibility to either make one lump-sum contribution or a series of contributions to charities like Roseville Lutheran Church. Any contribution—of cash or non-cash assets—received by December 31 is eligible for a 2022 tax deduction.

Donate Appreciated Stock. Donating stock which has been held more than a year can eliminate the capital gains tax that would otherwise be incurred if the stock were sold first and the proceeds donated to Roseville Lutheran Church.

QUESTIONS?

For questions specific to donating to Roseville Lutheran Church, contact Laurel Hofeldt at lhofeldt@rosevillelutheran.org or 651-487-7752. Always consult with a tax professional before acting on these strategies.

WINTER VALET PARKING

During 9:00 am Worship

Don't let the snow and the icy walkways stop you from attending Worship service on Sundays! Once it gets cold, we will be offering Valet parking at the 9:00 am worship. If you are interested in helping with this ministry contact Mike Dolan or Diane Sell at dsell@rosevillelutheran.org.

SHARING TREE

Unwrapped Gifts Needed by Dec. 18

The RLC Sharing Tree will run from November 27 through December 18 (Warm Tummies, Toes, and Hands ends Dec. 7). We will have 2 Sharing Trees this year: one in the commons with the Gift Card station, and one in the upper lobby (no gift card station). Please, return your gifts UNwrapped by Dec. 18. Tags can be taken from the tree as usual and added with the gift when you drop them off. We are delighted to have these sharing trees that help serve the needs of our community partners during the holidays. More information online at www.rosevillelutheran.org/sharing-tree.

CENTRAL PARK ELEMENTARY

- Gift Cards for Cub, Target, Walmart, Gas Cards

There are TWO options for gifts cards:

1. Order through RLC: email Pastor Marty at mwyatt@rosevillelutheran.org with the type of gift card, amount, and which organization it is for (in this case, Central Park). Buying through RLC will support the RLC Youth Program. You can make checks payable to RLC with "gift cards" in the memo line.
2. Purchase a gift card at the store and drop it off at RLC in a secure bin located at the church near the Sharing Tree in the Commons.

KEYSTONE COMMUNITY SERVICES

- Dish soap, laundry detergent
- Shampoo, conditioner, hair products, deodorant
- Toothpaste and toothbrushes
- Baby wipes, diapers size 4,5,6

BRIDGING

- Pots/pans (all sizes, especially large)
- Baking pans (9x13, cookie sheets, muffin tins, etc.)
- Casserole type dishes, mixing bowls, silverware
- Queen blankets and sheets, twin blankets and sheets

PROJECT HOME

- Toys for all ages

WARM TOES AND TUMMIES - Please Return by Dec. 7

- New socks, ADULT SIZES (men's/women's), need a total of 200 pairs
- Adult sized gloves and mittens for men and women.

EVERY MEAL

- Make a donation in any amount!

\$50 = Two cases of chunk chicken • \$100 = 33 bags of food packed and ready to be given to a child • \$250 = One child for a year (and then some) • \$1,000 = 2,000 cans of fruit • Any amount is important to pursuing our vision of Every Child. Make checks payable to Roseville Lutheran Church with Every Meal in the memo line. Checks can be dropped off or mailed to RLC.

Gifts Needed by Dec. 18

Please return the gift (unwrapped, with the name of the organization on it) by Sunday, December 18. The church office is open Monday-Thursday from 9 AM to 3 PM. If you have questions, please contact Diane Sell at dsell@rosevillelutheran.org or call the office 651-487-7752.

SPECIAL SERVICES THIS SEASON AT RLC

Save the Dates. Invite a Friend or Neighbor!

You are invited to attend and participate in these upcoming special services planned at Roseville Lutheran Church. All are welcome!

RLC'S 80TH ANNIVERSARY CELEBRATION ONE WORSHIP AT 10:00 AM • SUNDAY, NOV. 27

You invited to a time of celebration as a people of faith as we reflect on the past eight decades of mission and ministry. Please note: there will be **ONE worship service at 10:00 am** as we gather together on Sunday, Nov. 27. Join us for the celebration and worship! Special treats following the service.

RLC KIDS CHRISTMAS PROGRAM 10:30 AM • SUNDAY, DEC. 11

The RLC Kids Christmas Program will be held on December 11, 2022 during the 10:30 am worship service. This is a chance to celebrate and support our kids as they tell the Christmas story in a fun and creative way!

RLC CHRISTMAS FESTIVAL CONCERT 7:30 PM • SATURDAY, DEC. 17

The RLC musicians return with a beautiful program of music, scripture, prayers, and readings, with congregational singing. A lovely reception will follow the worshipful program.

CHRISTMAS EVE 3:00 AND 4:30 PM - FAMILY SERVICES 9:00 PM - CANDLELIGHT WORSHIP

3:00 and 4:30 worship - Celebrating the birth of our Lord Jesus, with family blessings at the close of the service

9:00 pm - Celebrating the birth of our Lord Jesus, with Holy Communion, brass and choirs.

CHRISTMAS DAY ONE WORSHIP AT 10:00 AM, SUNDAY, DEC. 25

Join us for Christmas Day worship at **10:00 am** on Sunday, Dec. 25. There will be no RLC Kids this Sunday.

NEW YEAR'S DAY ONE WORSHIP AT 10:00 AM, SUNDAY, JAN. 1, 2023

Join us for New Year's Day worship at **10:00 am** on Sunday, Jan. 1, 2023. There will be no RLC Kids this Sunday.

REGULAR WORSHIP SCHEDULE 9:00 AND 10:30 AM - SUNDAY, JANUARY 8

Our normal Sunday routine returns on Sunday, Jan. 8 with worship at 9:00 and 10:30 am, Adult Education, RLC Kids, and other activities.

THANK YOU FOR YOUR SUPPORT!

Rebecca Bedner, Director of Development

This will be my second Fall and Winter season at RLC, and I am excited to participate in all of the upcoming events! I enjoyed my time with many of you at Rally Day and Oktoberfest. What a great way to bring people together to share food, fun and fellowship. I am looking forward to being together again soon for Thanksgiving, Christmas, and the New Year. It will be here before we know it! In the meantime, I have a few updates to share with you all.

We recently wrapped up our 2022 Annual Appeal, and a record amount of people completed our Intent to Give forms. Thank you, members and friends, for prayerfully considering how sharing your gifts allows you to participate in the promises of God. If you weren't able to complete an Intent to Give form and still want to do so, contact me for more information.

You may have noticed that I am now speaking during the offering at most worship services. My intention is to share how your gifts are helping us live out our mission and vision at RLC and in our community. Your gifts are supporting our ministries that change peoples lives everyday! Thank you for your past and current gifts, and your intention to continue your support in the future. Thank you for helping us thrive as a community united by grace.

Finally, the Endowment Committee will be offering Love Lights and Luminaries again this year. The Luminary Bag will contain a votive candle, a family friendly activity and a Love Light Star. You will have an opportunity to write the name of a loved one on the star which will be highlighted in our Festival Christmas Concert on December 17th. Love Light Luminaries will be available online starting in mid-November and on Sundays right after Thanksgiving through December 11th.

Please contact me if you have any questions about the Annual Appeal, Love Lights and Luminaries, or how your gifts are supporting RLC's ministries. I hope to see you at one (or all!) of our upcoming events!

Rebecca Bedner, Development Director



LOVE GOD • LOVE YOUR NEIGHBOR

RUNNING continued from Page 3

Here at RLC, we have been running full speed as the school year kicked off! During September we celebrated Pastor Tori joining RLC as the Pastor of Youth and Young Adult Engagement and we welcomed 30 new congregation members. We have seen increased participation in our Sunday worship services and would love to see everyone join either at our in-person services or online. Make sure you stop by the welcome desk and say hello to RLC staff and council members!

Additionally, our Task Forces have been hard at work – there will be upcoming opportunities to join in conversations with the Organizational Task Force and Inclusion Task Forces in January / February time frame. I invite you to come to those discussions to hear more about their work and ask any questions that you may have!

On a final note, as we are entering the hustle and bustle of the upcoming holiday seasons, I encourage everyone to take a minute to consider where it is you are running towards.

Rebecca Field, RLC Council President

BECOMING A DEMENTIA FRIENDLY CONGREGATION

Diane Sell, Director of Engagement and Care

Communication is a basic human need. The ability to exchange ideas, wishes and feelings is a basic need.

Alzheimer's and dementia diseases gradually diminish a person's ability to communicate. One needs patience, understanding and listening skills to communicate with dementia. RLC is continuing to look at ways that we can become a dementia friendly congregation. Some ways are providing resources for families through our Lyngblomsten partner. Other ways are more creative. If you are interested in joining a small group of RLC members who are working on this please reach out to dsell@rosevillelutheran.org



5 Key Messages about Dementia

1. It's not a natural part of growing old
2. It's caused by diseases of the brain
3. Its not just about losing your memory
4. It's possible to live well with it
5. There's more to a person than dementia

Why is it important to incorporate Dementia friends into our faith community?

People with dementia do not have fewer spiritual needs. Spirituality connects through a familiar song/prayer and a simple religious ritual. A dementia specific worship can elicit responses differently than other stimuli. Spirituality and religious activity can provide relief for people with dementia and their caregivers. Relief can include decreased anxiety and behavioral disturbances, improved sleep, mood, quality of life, engagement, and alertness. It can reduce a caregiver's burden.

MID-WEEK DEMENTIA FRIENDLY WORSHIP SERVICE BEGINNING JANUARY 2023

Join friends, old and new at 10:30 am, Wednesday mornings,
once a month: Jan. 11 and Feb. 8

- 30 minute service will be held in our Worship Center.
- Familiar and traditional hymns.
- Scripture readings.
- Special music.
- Short story or mediation.
- Prayers and communion.

We all know what it is like when someone shows that they care for us. People with dementia are no different and flourish when they are shown, love. Love is displayed through acceptance and inclusion. Many people with dementia have lost their social circles and friends.

This service is open to all but especially geared toward those with short attention spans and those unable to sit for a long time. God loves all people, including people with dementia. People with dementia and their family caregivers should be able to worship God, experience personal transformation, and develop an increased sense of hope and meaning. We want to create a multi-sensory experience that helps the person with dementia be alert to what is happening. Please pass the word on to friends and neighbors and join us! If you would like to know more or would like to participate in this service, please reach out to Diane Sell at dsell@rosevillelutheran.org

JANUARY IS RESTAURANT MONTH

Food has always brought people together. Throughout the Gospels in the Bible, we see Jesus using food to unite people.

- When he wanted to get through to Zacchaeus, he went to his house for a meal.
- When he wanted to explain what the kingdom of God is like, he did it through a shared meal and encouraged us to carry on that practice.

Jesus started a tradition that used meals to signify certain things. The Jewish people adopted this and celebrated feasts such as Passover, Pentecost, Yom Kippur and Tabernacles and passed on the wisdom to the next generation.

The same is true for different cultures across the world. Food acts as a central point where people gather around, and serves as a place where stories are told and wisdom passed down to generations.

Communal eating increases social bonding and feelings of wellbeing, and enhances one's sense of contentedness and embedding within the community.

JOIN US IN JANUARY

The month of January you will be able to sign up and join members of our congregation for a meal and will have a list of days, times and restaurants to choose from. It may be a breakfast, lunch or dinner. or be a gathering for appetizers or brunch. You get to choose! We will have RLC hosts that will meet you at a restaurant and dine with you. In your confirmation email you will find out who your hosts are!

The purpose of this is simple: to continue our connection with other members in our community. The link below is where you will sign up. You can also sign up on Sunday mornings with Diane or Mary at the Welcome Center.

www.rosevillelutheran.org/restaurant-month

WELCOME PASTOR TORI REMER

Tori Remer, Pastor of Youth and Young Adult Engagement

Pastor Tori Remer began her ministry with Roseville Lutheran Church in September 2022. Pastor Tori received a unanimous vote to extend a Letter of Call at RLC's annual meeting on August 28, 2022.

Pastor Tori joins the pastoral staff as the Pastor of Youth and Young Adult Engagement and brings to us the gifts of building relationships, communication, preaching and teaching as well as leadership skills. We are excited to have her join us!

Some have asked why we choose to hire a pastor in this role, instead of a lay leader. As you may be aware, our Children's Youth and Family staff used to have three positions: Director of Youth Ministry, Deacon of Faith Formation, and Director of Children's Ministry. The council approved moving forward with calling a pastor or deacon in the area of CYF as well as searching for a new Director of Children's Ministry. Pastor Tori oversees the areas of confirmation ministry, youth and young adult ministry, as well as sharing her gifts in worship leadership and preaching.

We continue to search for a new Director of Children's Ministry. In the meantime, your pastoral staff continues to work together to provide opportunities for ministry and education for our children and their families.





LOVE LIGHTS AND LUMINARIES

Order by Sunday, Dec. 11

The RLC Endowment Committee will be offering Love Light Stars and Luminaries to honor the memory of your loved ones during this coming Christmas Season. In previous years, there have been sales for both Love Light Stars and Luminaries. This is the second year that the Endowment Committee will be combining the Love Light Stars and Luminaries together.

A beautiful Luminary Bag will contain a battery operated votive candle to light in your home, and a family friendly activity about honoring the legacy of those we love. The bag will also contain a Love Light Star in which you can write the name of a loved one that you want to honor at our Festival Christmas Concert on December 17th. Love Light Stars and Luminaries will be available online and after Sunday services starting right after Thanksgiving through December 11th. Contact Rebecca Bedner (rbedner@rosevillelutheran.org) if you have questions. Order online at www.rosevillelutheran.org/lovelights.



ATTENDER TO MEMBER MEMBER ORIENTATION

10:00 am, Sunday, January 15, 2023 – Upper Level Lounge
New Members Welcomed on Sunday, January 29

On Sunday, January 15th from 10:00 - 11:00 am, those who are interested in learning more about becoming a member of Roseville Lutheran Church are invited to meet in upper level Lounge.

Attending RLC but not yet a member? This orientation is designed to welcome you as a member of the church, as well as orient you to the various mission and ministry opportunities available to you and your family. New members will be invited to join us in worship on Sunday, January 29 for a welcome at either 9:00 or 10:30 am. You may register for the orientation by contacting the church office at 651-497-7752 or emailing Mary Johnson at mjohnson@rosevillelutheran.org

A COMMUNITY UNITED BY GRACE

LOVE GOD • LOVE YOUR NEIGHBOR

ASH WEDNESDAY AND LENT

LIFE: What Happens Between Birth and Death

The Lenten season begins on Ash Wednesday, February 22 with worship at 5:00 and 7:00 pm. Throughout the season of Lent we will be exploring **LIFE** together. Join us Wednesdays for worship, study and soup suppers. Together we will explore opportunities for:

- L- learning together in faith
- I - Intercessions and prayers
- F - Finding fellowship with one another
- E- Eating meals together

Life isn't just what happens to you, true life is what happens through you. Join us for this season of Lent!

- Ash Wednesday, February 22 – Worship 5:00 and 7:00 pm
- Lenten Wednesday Worship – March 1, 8, 15, 22, 29 at 5:00 and 7:00 pm
- Lenten Soup Suppers Wednesdays – Serving from 5:30 - 7:00 pm
- Lenten Wednesday Study – March 1, 8, 22, 29, April 5 at 9:30 am, 6:00 pm

RLC PRESCHOOL FUNDRAISER CONTINUES!

We have partnered with Parkway Pizza and "Dine Out for Schools." The fourth TUESDAY of the month any purchase at Parkway Pizza results in 5% of total sales for the day being donated to RLC Preschool! It's a win/win by supporting two local businesses! Make some meal plans and mark your calendars now for:

- Dec. 27
- Jan. 24
- Feb. 28
- March 28
- April 25
- May 23



CONGREGATIONAL CONVERSATIONS

Mission and Vision Organizational Method

- IN PERSON MEETINGS
Sunday, Jan. 15 at 9:00 and 10:30 am - Room 40
- ZOOM CONVERSATION
7 pm, Tuesday, Jan. 17: <https://us02web.zoom.us/j/86744914985>

Roseville Lutheran Church has before them the mission to "Love God. Love your neighbor." and a vision to be a "Community United by Grace."

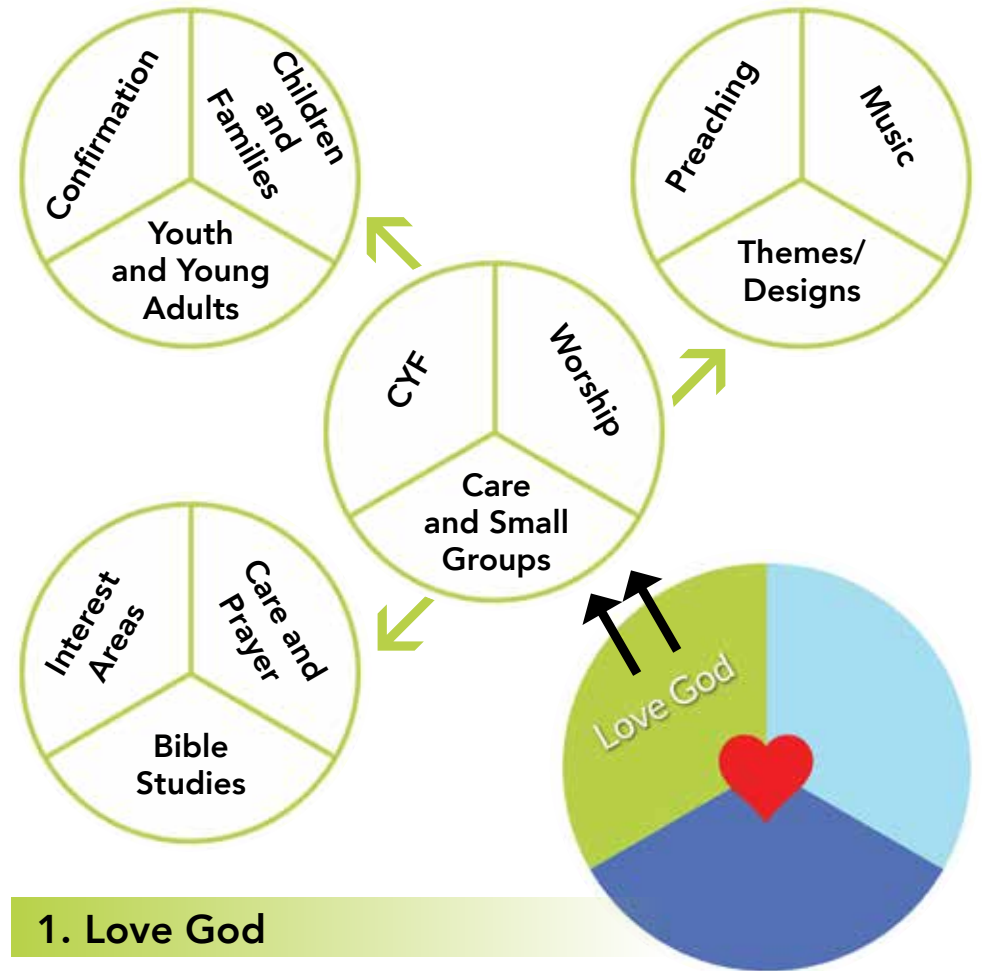
As we live out this mission and vision, we desire to be a people who come together in common mission as a people of God and siblings in Christ: in action, community, education, support, prayer, care, and encouragement.

SEE YOU IN JANUARY

Please join us to discuss this new organizational structure, hear more about how it encourages us to live out our mission and vision, and how this structure offers up new opportunities for action and engagement.

THE RLC ORGANIZATIONAL TASK FORCE:

- Kris Olsen - Council member and liaison to Mission and Outreach
- Kevin Hansen - Previous council member, liaison to Youth Ministries
- Val Velde - Current President Elect of the Church Council
- Pastor Lauren Wrightsman, ex officio member
- Pastor Marty Wyatt, ex officio member
- Daniel Pederson, Director of Communications, ex officio member



MISSION AND VISION ORGANIZATIONAL METHOD

Val Velde, RLC Organizational Task Force

This model provides us with the opportunity to engage membership and leadership in the areas that bridge out from the first triad. As you encounter the organizational method on these pages, please consider the following:

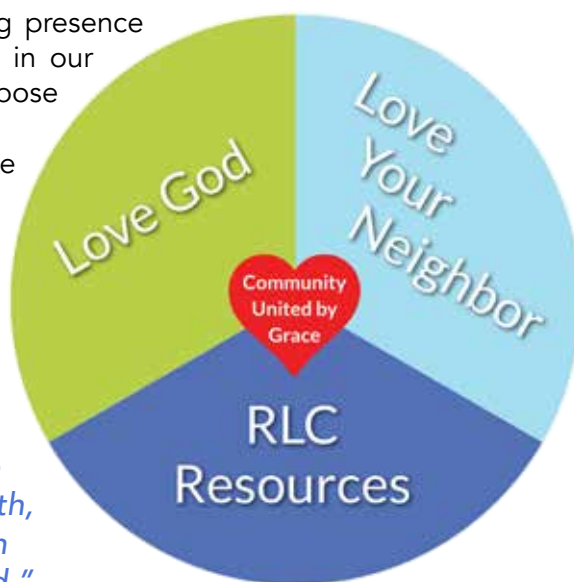
♥ A Community United by Grace

We strive to be a unifying presence in this community. As stated in our values, "the Lord has a purpose for us here, in Roseville."

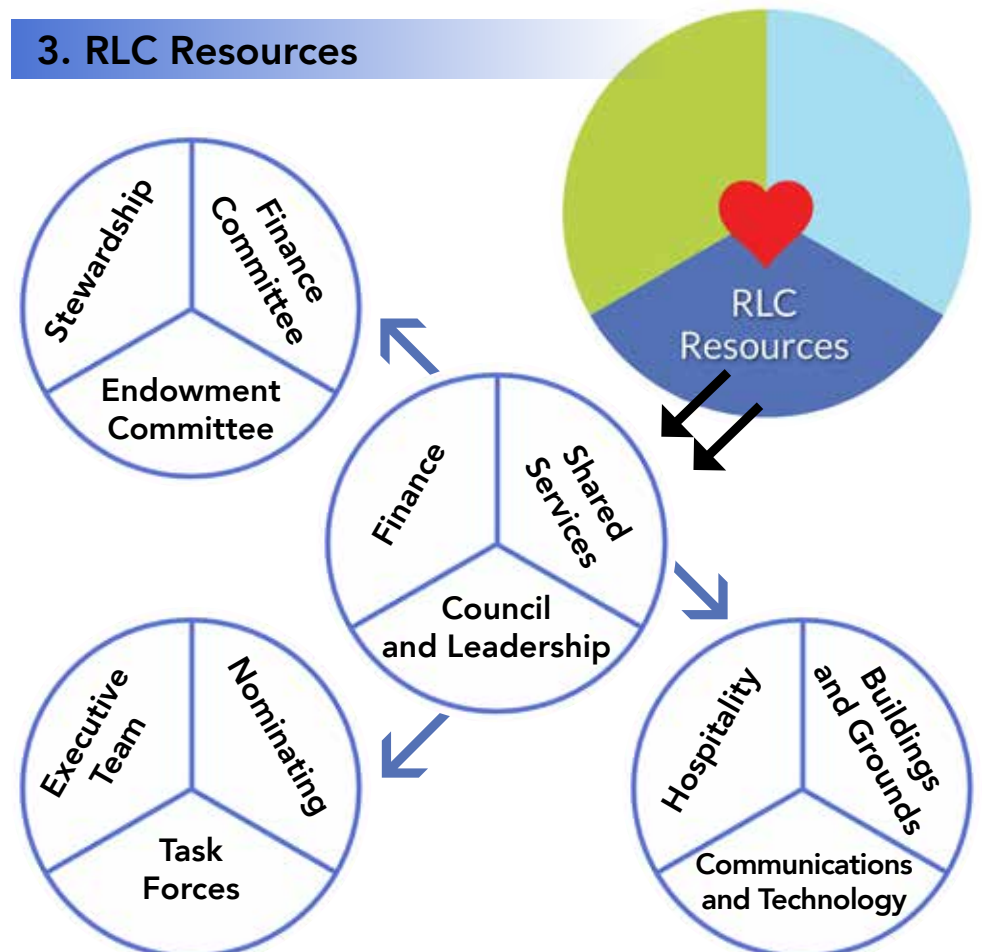
This means we come together to learn, love, and support one another with grace. This is lived out in the ways we engage in honest and difficult conversations, pray for one another, and support the body of Christ.

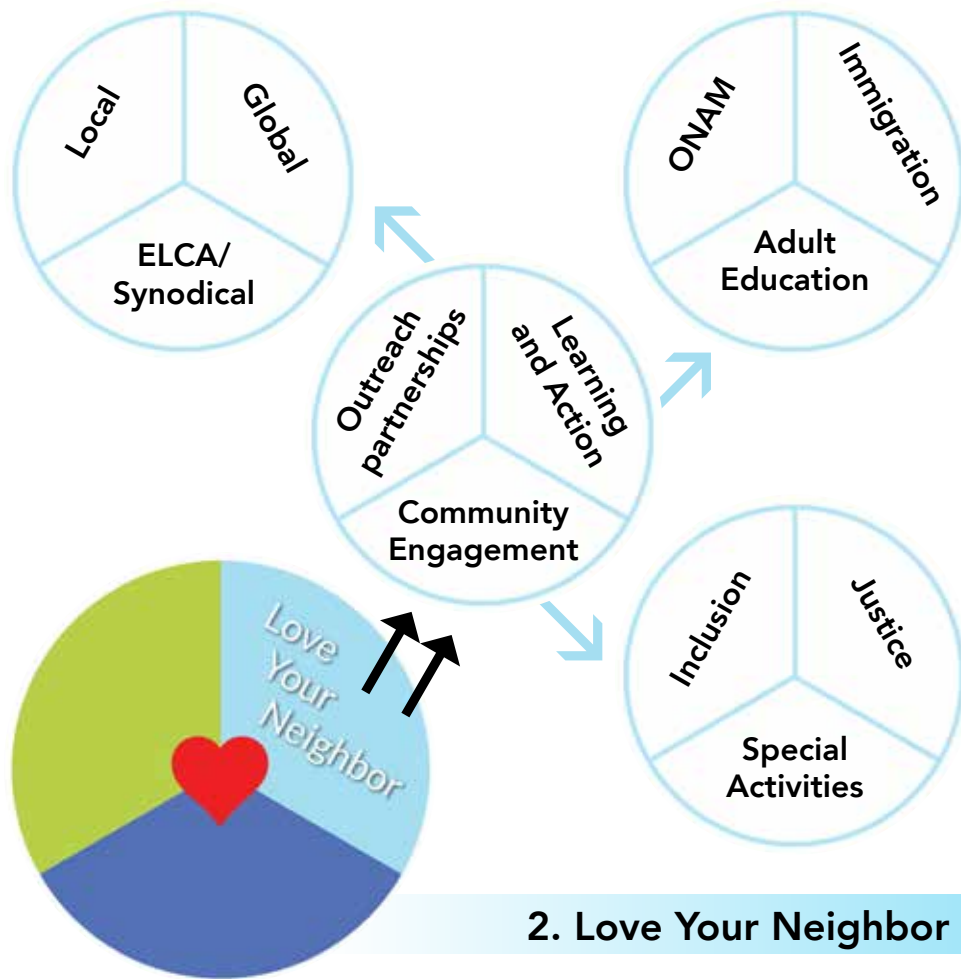
"For by grace you have been saved through faith, and this is not your own doing; it is a gift of God."

- Ephesians 2:8



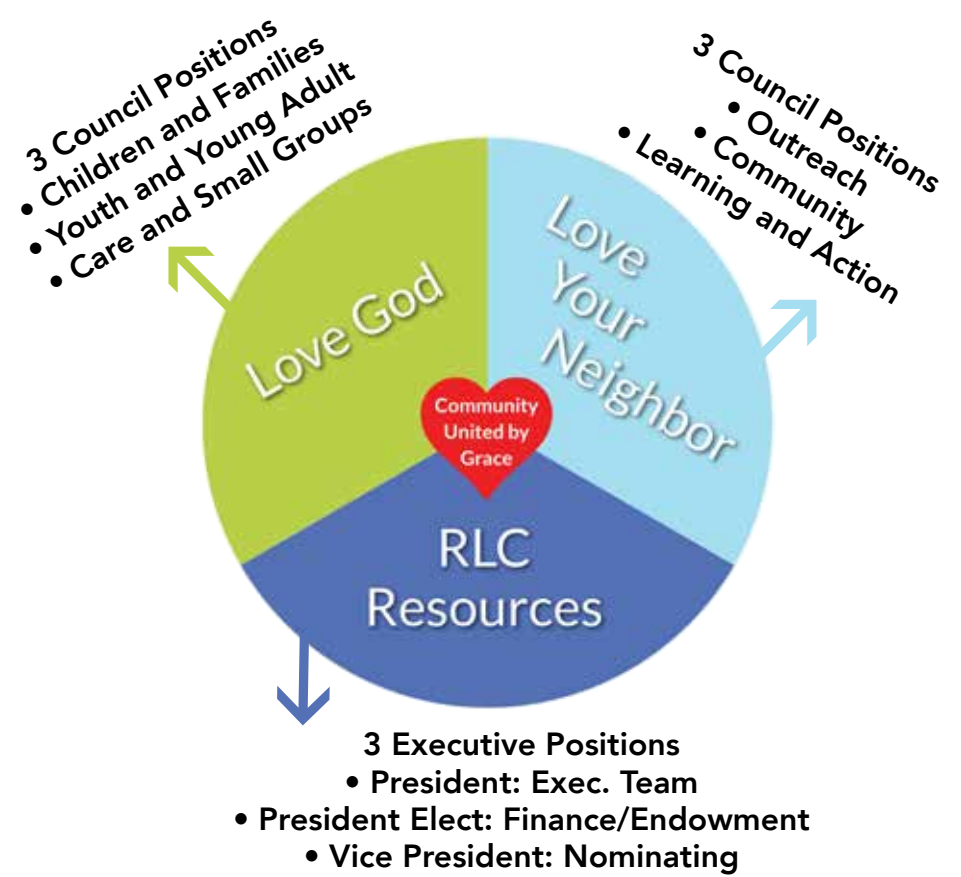
3. RLC Resources





2. Love Your Neighbor

RLC Council Liaisons



1. Love God

This means a relationship and interest in knowing the one who loves and knows us best.

“You shall love the Lord your God with all your heart, with all your soul and all our mind.”

– Matthew 22:37

This is exemplified in our communal worship, our activities with our children, youth, families and young adults, as well as our care and small group ministries.

2. Love Your Neighbor

This means recognizing that we are called to love as we are first loved. This is a commandment of action and is lived out in the ways in which we respond to our neighbors both locally and globally.

“You shall love your neighbor as yourself.”

– Matthew 22:39

This is exemplified in our work in the areas of: Outreach Partnerships, Community Engagement, and Learning and Action

3. RLC Resources

This means we have a responsibility to be good stewards of the gifts given to us by God.

“Like good stewards of the manifold grace of God, serve one another with whatever gift each of you has received.”

– 1 Peter 4:10

These include: the gifts of leadership; physical building and resources; communication; and financial gifts present in our congregation.

RLC Council Liaisons

This is a way of keeping connected and overseeing the various triads in our organizational model. RLC Council members and Executive Team will have specific areas of connection and communication. This will streamline information sharing and will help all levels within the model have a sense of connection to the whole. This will also aid the Council in making decisions regarding current and future needs and opportunities for action.

REMEMBER: JOIN US IN JANUARY FOR MORE INFORMATION!

Please join us (in person, Jan. 15, or via Zoom, Jan. 17) to discuss this new organizational structure, hear more about how it encourages us to live out our mission and vision, and how this structure offers new opportunities for action and engagement.

RLC YOUNG ADULTS

Jan. 5 - Young Adult Service and Get Together

On Thursday, January 5 at 6:00 PM, we will be providing a time to gather for people who are post-high school, maybe those back from college break or those looking to connect at Roseville with others of a similar age, and those who are looking for a worship service and time that are not Sunday mornings. We will have a meal after with time to talk and get to know each other. If you have any questions or a young adult interested in helping out with the worship service, please contact Pastor Tori, tremmer@rosevillelutheran.org

Jan. 22 - Gather Twin Cities Young Adult Ministry

Gather Twin Cities is an ELCA ministry for young adults in the Twin Cities inviting people into community for meals and for worship. They meet every other month at various churches and locations around the Twin Cities. The next one is Sunday, January 22 at 5:30pm, and it will be held at St. Anthony Park Lutheran Church in St. Paul.

LENTEN MENTORS NEEDED FEB/MARCH

6-Week Commitment to a 9th Grade Confirmation Student

This year we are looking for 24 adults in the congregation to be mentors to our 9th grade confirmation students during Lent. The idea is to connect these students with members of the congregation who can get to know them and call them by name! It would be a 6-week commitment beginning with a Mentor Meeting on **February 15** at 7:00 p.m. As a mentor, you would attend the 7:00 PM worship with a 9th grade student, and then meet with them afterwards one on one for four weeks in Lent (February 22, March 1, 5, and 29. Students have Spring Break March 15 and Holy week is April 5 so you would not meet those weeks). You will be given all the materials you need including discussion questions and talking points for your time together. Please contact Pastor Tori Remer at tremmer@rosevillelutheran.org if you are interested in being a mentor.

YOUTH EVENT - SNOW TUBING

Join other Roseville Lutheran Church Youth (7th-12th grade) for an evening of snow tubing at Green Acres in Lake Elmo on Friday, February 10. We will meet at Roseville Lutheran Church at 6:15 PM and depart at 6:30 PM. We will be back to the church at 9:30 PM. Cost is \$16 per tuber. Registration for this event will be available in December. Please contact Pastor Tori, tremmer@rosevillelutheran.org, with any questions, or let her know if you can carpool/chaperone!

9TH GRADE CONFIRMATION RETREAT

Urban Plunge at Augsburg University, Jan. 27-28

This year the 9th Grade Confirmation Retreat is Friday January 27 through Saturday January 28. We will be doing our retreat with Urban Plunge at Augsburg University. Urban Plunge is an overnight, Augsburg student-led, faith-based experience. We will learn about and explore the gifts and challenges of the Cedar-Riverside neighborhood in Minneapolis. You can register online for this event. If you have any questions, please contact Pastor Tori at tremmer@rosevillelutheran.org.

GIFT CARD FUNDRAISER

As we look forward to the upcoming holiday season, we all want to get the most out of the money we spend and make sure our dollars have the largest impact when we donate. Our Youth Gift Card Fundraiser does both!

If you choose to participate in the Sharing Tree this year at RLC, or if you're looking to use gift cards as stocking stuffers or presents, please consider purchasing a gift card through our youth program. We provide gift cards to hundreds of large retailers nationwide, and we receive a rebate on all the gift cards. The rebate from each purchase goes directly into our scholarship fund to send more youth to camp each summer. The face value of the gift card stays the same, which means you pay exactly for what you're getting. It's as simple as that! Contact Pastor Marty (mwyatt@rosevillelutheran.org) to learn more and purchase your gift cards.

SUMMER CAMP AND TRIPS

Registration won't be open until after the new year, but for now simply save the dates!

CAMP WAPO

Seeds Weekend June 23-25 (completed 1st-3rd grade)

This action-packed session for our youngest campers is the perfect Introduction to camp. Knowing that this may be some kid's first camp experience or even their first time away from home, our counselors will spend every moment with these campers. They will provide a safe and caring environment filled with music, Bible study, campfires, crafts, water activities and tons of games.

CAMP WAPO

Week at Camp July 23-28 (completed 4th-8th grade)

Campers will experience a place of grace to meet new friends, experience new activities, and make memories that will last a lifetime. The week is packed with a variety of activities that are meant to impact kids in a meaningful way, taking them higher, wider, longer and deeper into the love of God and community with each other. Each day includes Bible study, chapel, cabin activities, free time, field games and campfire. Summer youth camp at Camp Wapo is a week youth will never forget!

CAMP WAPO

Servant Leadership Program July 23-28

(completed 9th-12th grade and previously attended Camp Wapo)

This program provides High School campers an opportunity to grow deeper in faith and learn leadership skills by working with younger kids. Servant Leadership Program (SLP) campers will be assigned to a youth cabin and be trained to assist Wapo counselors in leading a variety of activities. SLP campers will be mentored by their partnering Wapo counselors and the SLP program staff. This experience is ideal for those demonstrating maturity, commitment and joy in working with younger kids.

WILDERNESS CANOE BASE

July 30-August 5 (completed 9th-12th grade)

High school students will have the opportunity for a week of canoeing and spiritual growth through the Wilderness Canoe Base this summer! The canoe groups will have a chance alongside a leader guide to plan, coordinate, canoe, and camp their way through the boundary waters off the Gunflint Trail. Each day brings adventure, challenge, discovery, and fun as they learn and practice their paddling skills and overcome obstacles with the help of the whole group.

RLC SERVE SUNDAY

January 15 - Dresser Build

All are invited to participate in Serve Sunday to benefit clients of Bridging. Bridging is a local organization that helps people get back on their feet and into homes of their own by supplying home furnishings and things many of us take for granted. We will be assembling dressers for Bridging. On January 15 at 9:00 am and 10:30 am, the whole congregation is invited to help with this project! Instead of regular programming, kids and their families are invited to assemble a dresser in the Activity Center. Serving side by side to be a blessing to others is meaningful for all that participate. If you are unable to be there for the build and still would like to help, please consider donating to assist with the cost of the dressers. If you are donating, please make a check to RLC with "Bridging" in the memo line. Join us as we assemble dressers for Bridging!



RED ENVELOPE FUNDRAISER

February 12 Kick Off Raises Funds for Youth Summer Trips

We will have the Kick-Off on Youth Sunday, February 12 for our next Red Envelope Fundraiser. Summer trips are an important part of our youth program. They offer unique opportunities to step away from daily routines to serve, grow in Christian community, and strengthen personal relationships with God. Join us for Youth Sunday worship on February 12 to help us kick off our Red Envelope fundraiser. All of the proceeds from Invest In Our Youth go to making our summer trips possible for all families. Your support means that life-changing experiences continue to be offered to every one of our youth: right here at RLC, in wilderness destinations, at residential camps, and in service in our community and around the world. Thanks, and see you on Sunday, February 12!



RLC READS

Monthly on Mondays... All are Welcome!

RLC Reads continues with an exciting collection of books to read and discuss. **As usual, anyone and everyone is welcome to join us** in discussion and conversation. Choose to read only one of the books or all of them or any number in between. If you don't finish, join us anyway... You probably won't be the only one who hasn't had time to read the whole thing! We try to create a fun and relaxing atmosphere. We'll meet in the "coffee shop" area near the church library at 7:00 PM on the dates listed, so it's easiest to use the north parking lot. Email Bob Bergstrom a week in advance of the discussion date so we know how many to expect. If you have any questions, contact Bob anytime at rcbergstrom@comcast.net.

2023 RLC Reads Book List

JANUARY 9

The Lincoln Highway by Amor Towles

Spanning just ten days and told from multiple points of view, this well-crafted novel takes the reader on a cross-country journey to remember. It's set in the U.S. in 1954, and the author creates unforgettable characters that teach us all some life lessons along the way. Chosen by several notable critics as the 2021 Book of the Year, this wildly entertaining story is predicted to become a classic. Don't let the length deter you. You'll finish it much faster than you think you will because you won't be able to put it down! (Recommended by Jan Abel and Erik Wolhowe, 576 pages, 2021)

FEBRUARY 13

The Seed Keeper by Diane Wilson

This is a moving story of four memorable Native American women whose voices are deftly woven together by the Minnesota Dakota author into a beautiful story of reawakening and the importance of the seeds we plant and our connections to our ancestors. This novel was chosen as a "Best Book" of 2021 by several outlets and also one of the books RLC's ONAM committee chose to offer to the congregation for meaningful reading this past spring. (Recommended by Nancy Olson, 392 pages, 2021)

MARCH 13

Love Your Enemies: How Decent People Can Save America from the Culture of Contempt

by Arthur C. Brooks

The author is a noted social scientist who wants us to realize that abuse and outrage are not the right formula for lasting success. David Axelrod says that "Brooks reminds us that we can disagree without being disagreeable, and that everyday citizens have the power to bring our country back together." And Deepak Chopra describes this book as "a practical prescription that could lead to a more peaceful, just, sustainable, and healthier world." Sounds like we can all learn from it! (Recommended by Heidi Larson, 256 pages, 2019)

APRIL 17 (3rd Monday!)

Accidental Saints: Finding God in All the Wrong People

by Nadia Bolz Weber

{Note: Easter is April 9, so we're meeting April 17, which is the 3rd Monday of the month.} The author is a tattooed Lutheran pastor who often uses the F-word. She's honest about her shortcomings as she brings Christ to the unloved and offers hope to sinners. Her brutally honest book is filled with deep thoughts, inspiration, humor, and a resounding message of grace and imperfection. (Recommended by Nancy Olson, 224 pages, 2016)

MAY 15 (3rd Monday!)

Call Us What We Carry by Amanda Gorman

{Note: Because we met on the 3rd Monday of April, we'll also meet on the 3rd Monday of May} If you were moved by her poem, "The Hill We Climb" that she read at President Biden's inauguration (which is also included in this book), you'll enjoy the thoughtful collection of new poetry by this talented young woman, which instantly became a bestseller in 2021. Using various styles and structures, the poet reflects on the pandemic and uses her activist spirit to help us all heal. She brings insight to every topic and uses her graceful facility with language to form a voice for the future. Even if you're not a poetry fan, you'll be impressed by this young lady's genius. (Recommended by Bob Bergstrom, 211 pages, 2021)

LEARNING TO WALK IN THE DARK

Sher Noot, Director, RLC Preschool and Childcare House

Do you remember a time that there was no light? Maybe it was a time that the power went out when you didn't expect it. Or maybe you were up north away from all the city lights that light our way. The one thing that I remember from those times is how silent it seems. Strange actually since light affects our vision, not our hearing, but on those times, it often feels very quiet, and very still. It's during those quiet times that I believe we tend to listen in the hardest.

I often tell our little humans that they need to look with their eyes and listen with their ears. On occasion when I want them to respond by raising a hand, I will tell them that I am going to "listen" with my eyes and only want to see their hands raised with no voices. I think that there are times that we, too, need to "listen" with our eyes in order to take it all in.



ONE YEAR AS DIRECTOR

As I look over this past year, I have experienced a lot of new things as Director. You could say that I had moments of walking in the darkness, feeling my way through these experiences. The pandemic, and shut downs due to Covid cases, the huge undertaking of a renovation, and numerous staffing changes.

Most recently, I had to learn to walk in the darkness as we experienced a tragic neighborhood situation. Did we have a plan in place – YES. Were the events outside happening as we expected according to the plan? Well, not exactly. But we had a plan. Just like we often have a plan for our day, and our life, but God often has a different plan for us. We just need to lean in to listen and to see.

A GLIMPSE OF LIGHT

The best part of learning to walk in the darkness with God are those moments that he let's us know that he is with us. A glimpse of the light in the darkness such as a Trunk or Treat event, that outshined even our wildest expectations, a little human's giggle, a smile on a stranger's face, a hug or a pat on the back for a job well done. Or the millions of stars that light up the sky to lead our way. It's during those moments, I always like to look up and say, "Hey God I know that was you!"

With gratitude,
Sher Noot



RLC Preschool and Childcare Events:

- Parkway Pizza Fundraiser – 4th Tuesday of the Month
- Registration for the 2023-2024 School year – January 2023
- Gerten's Spring Plant Fundraiser – March 2023

UPCOMING PASTOR'S BIBLE STUDIES

Wednesdays at 9:30 am, Room 40 • Nov. 30, Dec. 7, 14, 21

Learning to Walk in the Dark by Barbara Brown Taylor

Join us during the season of Advent to explore how we, as a people of faith, learn to walk in the dark - not in fear, but in hope, knowing God's peace and promise.

All participants are encouraged to purchase the book by Barbara Brown Taylor. Each week we will explore various chapters and what it means to us as a people of faith. Books may be purchased online (Amazon retails for approximately \$15.00).

Please let Pastor Lauren know if you would like to order a book through the church. Scholarships are also available if you are unable to purchase the book. Contact Pastor Lauren at lwrightsman@rosevillelutheran.org.



Wednesdays at 9:30 am, Room 40 • Jan. 11, 18, Feb. 1, 8

The Book of Jeremiah

As we continue exploring the idea of "Learning to Walk in the Dark" we started in Advent, join Pastor Lauren as we explore the book of Jeremiah in January and February 2023. No sign ups required. Come as you are able (but remember your Bible!).

Lenten Wednesdays at 9:30 am and 6:00 pm

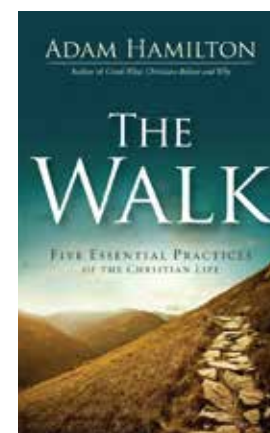
March 1, 8, 22, 29, April 5

The Walk by Adam Hamilton

How do we walk with Christ – daily follow him, grow in him, and faithfully serve him? In the Gospels, Jesus modeled for us the Christian spiritual life. The apostles taught it in their writings. And the Church has, through the last 2,000 years, sought to pursue this Christian spiritual life.

In *The Walk*, Adam Hamilton focuses on five essential spiritual practices that are rooted in Jesus's own walk with God and taught throughout the New Testament. Each of these practices is intended as part of our daily walk with Christ while also being an essential part of growing together in the church.

In each chapter, Hamilton explores one of these practices, its New Testament foundation, and what it looks like to pursue this practice daily in our personal life and together in the life of the church. Deepen your walk with Christ as we explore the five essential practices of worship, study, serving, giving, and bearing witness to our faith.



GET BOOK AHEAD OF TIME

Please purchase the book (*The Walk* by Adam Hamilton) prior to the Bible study (under \$20) If you are needing resources to purchase the book, please reach out to Pastor Lauren at lwrightsman@rosevillelutheran.org.

ADULT EDUCATION

10:00 am Sundays in the Social Hall

DECEMBER 4

Hymns of the Advent Season, Old and New,
with John Helgen

John Helgen, RLC Director of Music, leads a time of singing of hymns old and new for the Advent season, along with stories about the composers and church musicians that brought them to life.

DECEMBER 11

Organ Task Force Update

Join the Organ Task Force for a recap of our organ's shortcomings, a look at the pros and cons of various solutions and an update on the Task Force's next steps. We encourage your questions!



NO ADULT ED DEC, 18, 25, JAN. 1

JANUARY 8, 2023

Memorialize the Movement with Leesa Kelly

Leesa Kelly is an activist, writer, public speaker, and curator. Leesa is the Founder and Executive Director of Memorialize the Movement. Through her work with Memorialize the Movement, Leesa has spoken at over 17 conferences and universities, organized large-scale exhibitions in the Twin Cities and New York, and has led workshops on cultivating BIPOC representation and visibility in the museum and conservation industry. She believes in dismantling oppressive systems and rebuilding new systems that work for ALL people.

Leesa's passion for social justice and activism was formed during her college years at Western Michigan University. After graduating, Leesa worked as a political organizer for the campaign of Irene Fernando for Hennepin County Commissioner. In the winter of 2022, she became a McWatt Fellow, where she worked to strengthen Black history research and community engagement with the Ramsey County Historical Society, Hennepin History Museum, Anoka County Historical Society, and the Dakota County Historical Society. When Leesa is not planning the next exhibition or facilitating a workshop, she can be found snuggling with her dog, traveling, and working on self care.

JANUARY 15, 2023

Every Meal with Courtney Leason

More than 300,000 children in Minnesota live with food insecurity. Every Meal fights child hunger by focusing on filling the food gaps children face on weekends, extended breaks, and summer when they cannot access school meal programs. Come listen to Courtney Leason, Program Coordinator, as she shares about the history and updates since COVID. RLC has been in partnership with this program for years. We will also have members of RLC share their experiences with this ministry.

INCLUSION INFORMATION SESSIONS

The RLC Inclusion Task Force will hold information sessions on the council-approved Welcome Statement and Reconciling in Christ process on **Sunday, Jan. 29 at 9:00 and 10:30 am, and Thursday, Feb. 2 at 7:00 pm via Zoom.** Please come with any questions you may have about the welcome statement or the process in general and we will have discussion together. www.rosevillelutheran.org/lgbtq-inclusion

JANUARY 22, 2023

Do Good Roseville with Kathy Ramundt

Do Good Roseville is a grassroots community organization that makes connections – to share ideas and information – to do things that positively impact our Roseville, Minnesota community.

Do Good Roseville began in 2015 when Kathy Ramundt wanted to do something good in our community. She decided to collect children's winter coats, hats, and mittens, and Sherry Sanders said, "I'll help!"

JANUARY 29, 2023

Mental Health Challenges in Our Schools
with Jake Von De Linde and Delon Smith

Roseville Area Schools (RAS) Representatives (Jake Von De Linde, Director of Teaching & Learning, and Delon Smith, Director of Equity and Inclusion at RAS and Mental Health professional from RAHS) will talk about the number one issue they deal with daily in our 623 schools.

The issues affecting student mental health can be attributed to many factors, including the effects of the global pandemic. But many also blame our increased reliance on technology in everyday life. As this relates to students, the rise of technology presents both positive and negative aspects. Among those impacting students in a negative way are social media and online bullying. Recent Stats include:

- 1 in 5 students experiences a health problem.
- 70% of teens see anxiety and depression as major problems among their peers.
- Suicide is now the 2nd leading cause of death among 10-19-year-olds.
- 4 out of 10 students report bullying, substance abuse, and alcohol consumption problems for students they know.

FEBRUARY 5, FEBRUARY 12

Mental Health Discussions with Tyler Small

RLC welcomes Tyler Small, School Counselor, non public middle schools, and district mental health/crisis counselor Roseville Area Schools for this two-part discussion on mental health



Feb. 5: Adolescent mental health basics

- Stress
- Mental health disorders, including depression and anxiety
- Trauma
- Suicide
- Supporting kids who are struggling

Feb. 12: The effect of social media and other pressures on mental health

- Social media pros and cons
- Internet dangers
- Comparison culture, self esteem, eating disorders
- Future stressors
- Positive coping skills and alternatives

FEBRUARY 19

Presentations by Kristin Anderson

RLC welcomes Kristin Anderson for two presentations. The February 19 presentation is called "In Glorious Splendor: Seeing the Transfiguration." The February 26 presentation is "Forty Days in the Wilderness: The Temptation of Jesus in Art."

MUSIC OPPORTUNITIES AT RLC

If you have a musical gift you'd like to share at one of RLC's worship services, or would like to get involved in one of our vocal or instrumental ensembles, we welcome you! Pianists and accompanists are needed, as well as other instrumentalists and vocalists.

If you like to sing but can't commit to weekly rehearsals, consider the Festival Choir (sings for special events at Christmas and Easter – see schedule above right). Contact John Helgen, Director of Music at 651-288-4236 - jhelgen@rosevillelutheran.org.



RLC ORGAN TASK FORCE UPDATE

The RLC Organ Task Force has been working on a variety of educational opportunities to share what we have learned about how a pipe organ works and what our organ's shortcomings are.



All ages participated in the Organ 101 information sessions.

- The Task Force hosted Organ 101 sessions for 15 minutes after each worship service on September 25 and October 23. Over 75 people participated in the up close and personal sessions to learn how the pipe organ works.
- A 5 minute video was created which covers the history of our organ, its current problems and why it is important to address the organ at this time.
- The Task Force will provide progress updates and answer your questions during Adult Education on December 11, 2022 and March 5, 2023.

Follow our updates in the weekly eBlast and visit our webpage at www.rosevillelutheran.org/organ to view the video and FAQs.

Members of the task force are KJ Bach, John Helgen, Julie and Scott Henry, Martha Mutch, Craig and Heidi Sneltsjes, and organ consultant Dr. Greg Peterson.

FESTIVAL CHOIR

Rehearsals for RLC Christmas Festival Begin November 12

Get connected with singing at RLC! Join the Festival Choir for the Christmas Festival Concert *"Rejoice! With Heart and Soul and Voice!"* on Saturday, Dec. 17, 2022 at 7:30 pm.

There are four Wednesday evening rehearsals leading up to the day of the concert, with a Saturday kickoff rehearsal on November 12.



Saturday	November 12	9:30 to 11:30 am
Wednesday	November 16	7:00 to 9:00 pm
Wednesday	November 30	7:00 to 9:00 pm
Wednesday	December 7	7:00 to 9:00 pm
Wednesday	December 14	7:00 to 9:00 pm
Saturday	December 17	9:30 to 11:00 am 7:30 pm concert

2022 - 2023 RLC UPCOMING CONCERTS AND MUSICAL EVENTS

Mark down these exciting concert opportunities at RLC – more details will be available as the dates approach. All concerts are free except as marked with *.

Sunday	Nov. 27	2:30 pm	Northstar/Lake Country Chorus Holiday Concert * tickets at door
Tuesday	Dec. 13	7:00 pm	Greater Twin Cities Youth Symphonies
Saturday	Dec. 17	7:30 pm	RLC Christmas Festival Concert
Saturday	Dec. 31	7:00 pm	New Year's Eve with RLC Jazz with First Inversion Jazz Quartet
Sunday	Feb. 5	4:00 pm	Concordia College Band

LEGACY GIVING AT RLC

Did you know you can leave a Legacy Gift to the RLC Endowment Fund in your estate plan? Including your church home in your estate plan can extend your ministry passion for future generations. In the 1970s, members and friends of Roseville Lutheran Church (RLC) began an endowment fund to help enhance and extend the ministries and outreach of the congregation. Over time the fund has grown primarily through individual donations and planned estate gifts, memorials and proceeds from the Love Light sales each year. While the principal of gifts remain in the Fund in perpetuity, the earnings are distributed as grants twice annually. Since 2005, the Fund has distributed over \$200,000 in grants. Grants from the Fund are awarded for seed money, education, capital projects, missions, benevolence, worship and music. With each contribution, donors have left a legacy and entrusted their dollars to help meet the future needs of RLC and our community. If you have included RLC in your estate plan or are considering including RLC in your estate plan, please contact Rebecca Bedner, Development Director at 651-487-7752 ext. 226 or rbedner@rosevillelutheran.org.

LIVELY LANDSCAPERS

2022 Is a Wrap!

The Lively Landscapers 2022 season comes to an end as they continued to make improvements to RLC landscape and grounds. Here's the list... (WOW!!)...

- 1) More perennials were added to the Terrace by the South Entrance that continues to be a stunning splash of color at RLC's main entrance.
- 2) RLC Childcare House flower beds were trimmed up and mulched
- 3) Planters/pots planted with annual flowers throughout the growing season at the North and South Entrances. The Mezzo covered the planters nicely!
- 4) 7 cubic yds of mulch delivered and spread on the Terrace & South Entrance flower beds.
- 5) A bit of 'hardscape' (3 metal sunflowers) was added to the fence in front of the transformers
- 6) The automated sprinkler system was improved for the Terrace and the North Slope
- 7) The 2 weeping pines and a crabapple tree were removed near the South Entrance giving more light to the Commons
- 8) Four south parking lot islands got grasses and perennials installed as a part of an Eagle Scout project by Leo Soulia, member of RLC.
- 9) Parking lot islands were weeded... several times
- 10) Two Variegated Norway Maple trees planted just south of the Worship Center
- 11) A crew of 'Watering Buddies' kept the flower pots flourishing through a dry summer. (HUGE Thank You to these dedicated folks!)
- 12) 4 Ash trees infected with Emerald Ash Borer were taken down. Two new trees will be planted by the City of Roseville along Roselawn Ave.

Many thanks to the 2022 Lively Landscapers: Julie/Rich Wendland & KJ Bach (co-coordinators), Kathy Pedersen, Marj Bergstrom, Linda Satrom, Dave Werner. Thanks to these folks who provided add'l help for 'special projects': Mike Dolan, Erik and Matthew Wolhowe, Bob Bergstrom, Kathi Bergenheier, Carrie Hefte Hanton, Martha Mutch, and RLC Custodian Greg Saiko. Thanks to those who came in May 2022 for the Campus Cleanup.

Look for the next Lively Landscaper article in the Spring for another season of joining the Lively Landscapers to beautify our church home for those who come into our midst and for our neighbors! God's flowers and trees brings smiles to all who come to RLC!

Helpers Always Welcome

If you wish to participate with the 2023 Lively Landscapers contact KJ Bach (k-j-o@msn.com) or Julie Wendland (wendland8120@msn.com).

BLESSED HOLIDAYS TO YOU

Connie Marchio, Hospitality Manager

Hello Roseville Lutheran Church!

As we start to enjoy the times we can be together, RLC Hospitality has planned a few fun favorites in the coming weeks and months.

NOV. 27 - RLC'S 80TH ANNIVERSARY

The celebration of RLC's 80th anniversary as a congregation will be held on the last Sunday of November. I am planning an array of desserts that you may not have had in the past.

DEC. 3 - CANDY CANE BREAKFAST

Our Candy Cane Breakfast returns on Saturday December 3, 2022. This is a ticketed event and prepayment will be needed for this event. Space is limited so make your reservations early as we cannot accommodate walk-ins. Call the church office 651-487-7752 or www.rosevillelutheran.org/candy-cane.

DEC. 17 - CHRISTMAS FESTIVAL CONCERT

Our beloved Christmas Festival Concert on the 17th of December. This is always a fun event to do for the church and the Roseville community. See you there...invite a friend!

We are now also getting back to hosting outside guest events and we are always so happy to see these friends.

Volunteers Needed: Can You Help?

Since the last table we have been doing a lot of memorial and regular funerals. Due to a need of volunteers, RLC Hospitality is not able to host meals on weekends. If you would like to volunteer in hospitality I would love to see and meet you. If you are interested, you can call the office at 651-487-7752 and Mary will get you set up for upcoming events.

Lenten Soup Suppers

Conversation about Lenten soup suppers had started when this TABLE went to press. At this time I am planning that we will serve from **5:30 - 7:00 pm, starting Ash Wednesday, Feb. 22**. I think you will have the option to order ahead for take out as well. More details and menu to come...Stay tuned!

As we get ready for the holidays, my family wishes you a blessed Thanksgiving and a beautiful Christmas. Let the holidays begin!

Thank you for letting me serve you.

Connie Marchio



THRIVENT ACTION GRANTS APPRECIATED

A Simple Request Supports RLC Ministries

If you are a member of Thrivent Financial, you are eligible to request a Thrivent Action Grant that can be used for various service projects and activities that the Children, Youth and Family ministry does. Thrivent Action Grants are easy to request and much needed.

This is a great alternative to fund projects. If you are interested in providing one, contact Pastor Tori at tremer@rosevillelutheran.org or call the church office at 651-487-7752 x 234

RLC WINTER CALENDAR HIGHLIGHTS

Here are just a few of the upcoming happenings at RLC.
More information can be found on our website:

www.rosevillelutheran.org

NOVEMBER 27: ROSVILLE LUTHERAN'S 80TH ANNIVERSARY

ONE 10:00 am Sunday Worship Celebration, Reception

DECEMBER 3: CANDY CANE BREAKFAST

9:00 am. Reservations Required (see p. 16)

DECEMBER 11: RLC KIDS CHRISTMAS PROGRAM

During 10:30 am Sunday, Dec. 11 Worship Service

DECEMBER 11: DEADLINE FOR LOVE LIGHTS

Order online at www.rosevillelutheran.org/lovelights (see p.7)

DECEMBER 17: CHRISTMAS FESTIVAL CONCERT

7:30 pm - Rejoice! With Heart and Soul and Voice!

DECEMBER 24: CHRISTMAS EVE WORSHIP

3:00 and 4:30 pm - Family Service

9:00 pm - Candlelight and Communion

DECEMBER 25: CHRISTMAS DAY WORSHIP

ONE 10:00 am Sunday Worship Service

DECEMBER 31: NEW YEAR'S EVE JAZZ CONCERT

7:00 pm - RLC Jazz with First Inversion Jazz Quartet

JANUARY 1: NEW YEAR'S DAY WORSHIP

ONE 10:00 am Sunday Worship Service

JANUARY 5: YOUNG ADULT SERVICE & GET TOGETHER

6:00 pm Gathering and Meal (see p.10)

JANUARY 15: SERVE SUNDAY - DRESSER BUILD

9:00 and 10:30 am Sunday (see p.11)

JANUARY 29: INCLUSION INFORMATION SESSION

9:00 and 10:30 am Sunday (see p.13)

FEBRUARY 2: INCLUSION INFORMATION SESSION

7:00 pm via Zoom (see p.13)

FEBRUARY 22: ASH WEDNESDAY

Worship at 5:00 and 7:00 PM.

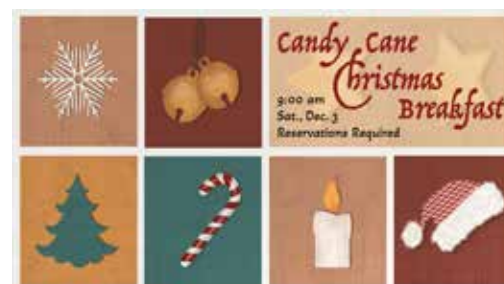
Lenten Soup Suppers Begin. Serving from 5:30 - 7:00 pm



CANDY CANE BREAKFAST

Register Now for Dec. 3 Event

We are having a special breakfast for children ages 2-10 years old, and the amazing adults in their lives on Saturday, December 3 from 9:00 - 11:00 am. If it is anything like previous years, this breakfast will be memorable! Extend the invitation to your friends and family. Wear your Christmas best and dine at our fancy tables. There is limited seating, so reservations are required! Reserve your place with online registration at www.rosevillelutheran.org/candy-cane. Tickets are \$10 for adults and \$8 for a child.



WELCOME BOB ZISMER

New RLC Campus Lead

We would like to welcome Bob Zismer to our Campus Team. Bob will serve as our Campus Lead in a part time capacity. Campus Leads assume overall responsibility for the smooth running of the building and grounds, including staff management, building user welfare and liaison with vendors and service providers. They will solve everyday problems, deal with emergency situations and will be responsible for health and safety in the building and on the grounds.

Bob Says "Hello, RLC!"

Hello everyone. My name is Bob Zismer and I recently took a position with RLC as a Campus Lead. My previous facility experience spans over many years as a plant and operations manager. My wife and I live in Northeast Minneapolis. My outside of work interests include walks in the Silver Lake Nature Center with my dog Stella, playing with my 2 year old granddaughter and leisure time on the backyard patio.



LEGACY GIVING TO RLC ENDOWMENT FUND

Please prayerfully consider leaving a Legacy Gift to the Roseville Lutheran Endowment Fund in your Estate Plan. With each contribution, members and friends leave a legacy and entrust their dollars to help meet the future needs of RLC and our community.

For more information about how our Endowment Fund works, contact Rebecca Bedner at 651-487-7752 ext 226.