



NON-PROFIT ORG.
U.S. POSTAGE
PAID
TWIN CITIES MN
PERMIT NO. 2168

1215 Roselawn Ave. W.
Roseville, MN 55113
651.487.7752

The Table

A Gathering of Good News
for the Friends and Members of
Roseville Lutheran Church

February - April 2015

The Season of Lent at Roseville Lutheran

A young boy stuffs his things in a backpack and sets off on an adventure that will change him for good. But not before he experiences an epic failure of rebellion, famine, loneliness, despair, and humiliation. An older brother who follows all the rules resents his younger brother's place in the father's heart, and refuses to celebrate the father's joy. Many of us know the Parable of the Prodigal Son, but what if it's actually a story of a prodigal God?

This Lenten Season, our mid-week worship services will be based on a book by Timothy Keller. Through hymns and sermons, discussions and introspection, we will hopefully see these prodigal children and know that they are us. And our prayer is that this Lenten journey will also change us for good.

Plan to join us each week, beginning Ash Wednesday, Feb. 18.

"Palm" Saturday Craft

Have you ever wondered how to make crosses out of the palms we give out on Palm/Passion Sunday? Here's your chance. Join us on Saturday, March 28 from 12:30 until 2:30 p.m. for a "Palm" Saturday Gathering. Learn how to make crosses from the palms we distribute on Palm Sunday each year, learn about the history of Palm/Passion Sunday and palm crosses, share in fellowship and help make 1,000 palm crosses for worship on March 28/29. A light soup and sandwich lunch will be served. Registration will begin on February 20 on our website.



Good Friday Family Worship

The Good Friday Family Worship will be held Friday, April 3 at 10 a.m. at Roseville Lutheran Church. This service is especially for families with children up through 6th grade, but all are welcome. Through music and song, drama and a craft the story of our salvation will be told. The service will be led by some of our elementary-age young people. The worship service will be followed by a craft activity for all that will help you to share the story of Jesus' death and resurrection with others.

A Task Force with a Big Task

by Pastor Steve Molin

The roadmap to a new pastor may seem like a puzzle to us . . . but it's not to God. We invite you to join us along the way as we seek to clarify our wishes and God's plan for the future of Roseville Lutheran Church.

Over the next four months, the Transition Task Force will become a household phrase at RLC! We will implement a survey from Holy Cow! Consulting and we will seek other input in multiple ways. The point in all of these instruments and conversations is to gain a fresh portrait of Roseville Lutheran Church: who we are and what we want to be in future. All of this information will be distilled into a report called the Congregation Site Profile (CST), which will be used by the Synod and the Call



Committee to seek our next lead pastor.

We will be communicating with you through many different avenues, but you may also seek us out to share your views and ideas. May we all be blest for the journey!



Use this logo to identify future Transition Task Force Communications!

Task Force Members are:

- | | | | |
|---------------|--------------|----------------|----------------|
| KJ Bach | Bill Metzger | Kathy Pedersen | Maren Schultz |
| Lon Erickson | Stacy Nealy | Mary Peterson | Jen Souvignier |
| Alex Koncilja | Bob Olsen | Hannah Schultz | Ella Sneltjes |
| | | | Trupti Storlie |

Worship with Us!

Traditional: Saturdays, 5:00 p.m. **Contemplative:** Sundays, 8:00 a.m. **Traditional:** Sundays, 9:00 a.m. **Praise & Worship:** Sundays, 11:00 a.m.

Table Talk - Pastor Steve Molin

Temporary...on Purpose!

Dear Church,

My son-in-law has been teaching at St. Paul Central High School for the past four years; he loves the diversity, he loves the kids, and he so values his staff colleagues. But apparently, Chris is a failure! Every autumn, he has more than 100 students on his class list, but by May, there are only a dozen or so kids remaining in his class. Sad.

But let me explain! Chris is a reading specialist, and every autumn, all of his students are high school seniors who have not yet passed the state graduation requirements for English. When students pass those requirements, they leave his class and move on to other courses. So you see, he's not a failure at all; he is experiencing overwhelming success!

Nearly 20 months ago, I arrived at Roseville Lutheran Church as your pastor, and my "class" was comprised of several hundred people who were struggling. Oh, you weren't failing as a congregation; on

the contrary, you displayed love and affection for one another, and exhibited very good worship and education practices. However, there was an air of sadness, and uncertainty, and even some mistrust in this place. I understood that I would leave RLC when things got really good, and really exciting, and really spirited. In fact, we all agreed to that. Sounds backwards, I know, that just when things are happy and comfortable, the pastor leaves! But that's what interim ministry is: it's temporary.

In the past few months, I have sensed a joyful optimism in our church. Such great things are happening in Children, Youth and Family ministries, our worship attendance has begun to show shoots of new growth, 13 new families joined our church last month, our Consecration weekend in November resulted in a wave of generosity, and serving our neighbor is flourishing, with folks from Project Home being with us in February and a major effort with Feed My Starving Children unfolding in April. There are signs of life everywhere in this place! To that end, the Transition

Task Force began meeting on January 4 (see article on page 1).

In March, the Church Council will appoint a Call Committee, and if you would like to be considered for the Call Committee, watch for a nomination form, online and at the Welcome Desk, in the coming weeks. On a Sunday evening in April, a representative from the St. Paul Area Synod office will be with us to explain the call process at a gathering of the congregation. It promises to be a very exciting time for this church that we love.

My encouragement to you is that you begin (or continue) praying that God will guide this entire process. This is, after all, God's Church, and God desires unity, health, and joy in this place called Roseville Lutheran Church. May it be so!

Temporarily yours,



Pastor Steve

President's Message

Happy New Year! It's a new year and with a new year come fresh perspectives and new ideas. 2015 will be a big one for RLC. By year-end, we could have a new senior pastor! It is time to imagine a new future for RLC while preserving the things that have made this a great congregation over past 70+ years.

In my last *Table* writing we were anticipating our Consecration activities in November. Thank you for everyone that participated in the planning of that weekend, especially our Stewardship Committee members. We had a great response to the messages and activities that weekend and I think it just the beginning of a new way of thinking about Stewardship.

In December, Council offered five opportunities for members to be hear a financial update and get information we received from a task force that was formed last summer. The purpose of the task force was to do a holistic review of our overall financial situation and then provide council with their ideas for changes for a stronger financial future. We had over one hundred members attend these sessions. If you were not able to attend, the presentation is available to review via www.rosevillelutheran.org/about/publications, under Special Documents. Take a look! In follow-up to those sessions, we held table discussions

in late January. These discussions were for members and friends to share their opinions about the information presented in December, and their ideas for our future. The conversations were captured via table facilitators and Council will use this information to help inform future decisions.

There are many, many great things happening every week at RLC but there are two I would like to highlight for you. One is called Project Home, which is organized through the St. Paul Council of Churches and is focused on helping homeless families have a warm and safe place to be at night. We will host up to 20 people per night in the month of February at RLC. The second is an ambitious Feed My Starving Children event coming later this spring and is in partnership with two other Lutheran congregations. The goal is to provide 1,000,000 meals to starving people. These are just two of the many opportunities for individuals and families to get involved and make a difference in the coming weeks.

For more than a year, we have been in transition and it has been a great time of growth and anticipation for what's to come next – now we are getting ready to embrace the new and move forward with calling a new pastor. The Senior Pastor Call process is

underway with the formation of the transition team. The purpose of the transition team is to gather information about the congregation that will become part of the profile we present to pastor candidates. That is important work and will pave the way to forming our Call Committee. We will solicit nominations for the Call Committee by the end of February and the nomination form will be available in paper form and online. For the latest, pick up a copy of "The Future is Now" newsletter, Pastor Steve's monthly update.

Finally, I was filled with mixed emotions when Pastor Kris shared with me her decision to leave RLC. We will miss her leadership of our care ministry, her thoughtful sermons, and big smile! I am happy for Kris in making this important decision and wish her well. I am also so grateful for Pastor Steve, Pastor Sara and all of our ministry and administrative staff for their dedication and commitment to all of us – every day of the year – especially in this exciting new year. Thanks be to God!

In His Service,



Kristin Olsen, Council President

2014 Consecration Weekend Results

Thank you to all the members and friends at Roseville Lutheran Church for making Consecration Weekend a success. For those of you who weren't able to attend Consecration Weekend, the RLC community came together to worship, consecrated our financial gifts by placing Intent to Give cards on the altar, and then shared a wonderful meal.

One goal of Consecration Weekend is to build community in our congregation through fellowship. Consecration Weekend (November 15 & 16) had the highest worship attendance since Easter last year. It was exciting to see so many members and friends gather to meet, share stories, and celebrate the mission and ministry at Roseville Lutheran Church.

Another goal of Consecration Weekend is to ask individuals and families to discuss how we

want to use our gifts to transform ourselves spiritually and to extend Christ's transforming love to others. We hope that people will grow in faith and become even more intentional about how we use our time, talents, or treasure to further Christ's work in our community.

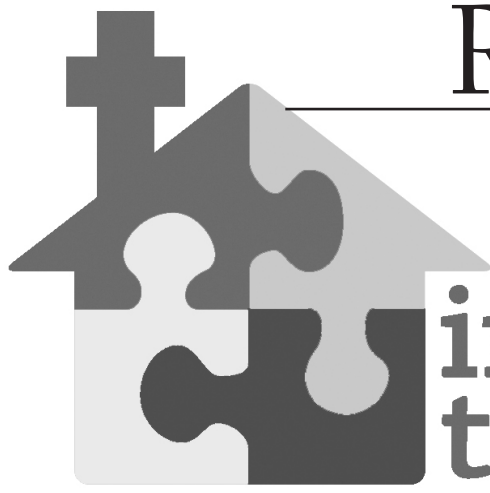
Our congregation gave concrete expression to these reflections by making written commitments:

- 369 households returned Intent to Give cards in 2014, compared to the 188 cards submitted in 2013, an increase of 96%
- 65 households increased their giving
- 25 households began giving
- \$885,000 were committed to general ministry in 2014, compared to \$515,000 in 2013, an increase of 71% of committed dollars

- 89 households committed an additional \$69,000 to the Building Fund (designated to property mortgage and maintenance)

We should be proud of ourselves as a congregation that in a time of uncertainty and transition, we have the capacity to remain steadfast and to stay the course. Without a permanent senior pastor in place, many congregations see huge fluctuations in ministry as they struggle through the process of finding new leadership. The quality of our ministry remains strong and these gifts are a testament to the incredible faith in this congregation.

Thank you for investing in the ministry and mission of Roseville Lutheran Church as we grow together in our faith.



RLC News & Notes

Building the Puzzle: What do the pieces look like?

One of the first steps in calling a new Lead Pastor is developing a profile of our congregation. It is an opportunity for Roseville Lutheran to think about and express who we are as a congregation and our vision for the future. A Transition Task Force has been created to help guide the profile process. Part of the Task Force's role will be to reach out to the congregation to discover our priorities as a congregation, our current strengths and weaknesses, and where we want to focus our energy in the future as we grow in our faith and as a body of Christ. Your viewpoints, impressions, and voice are the most important factors as we plan, together, our church's future.

The outcome of this discovery is a written document called a Site Profile that encompasses a description of who we are and where we think God is leading us. This profile will be submitted to the synod for prospective pastors to review. Additionally, the Call Committee (to be formed later this year) will reference this information as it evaluates pastoral candidates and discerns the fit between our congregation and the candidate.

Our first step will be a blind survey, the Church Assessment Tool, conducted by Holy Cow! Consulting. Holy Cow! Consulting was incorporated in 2000, though its staff has been working with churches in transition since 1985. The Church Assessment Tool is a survey that provides an in-depth

look at the experiences, perceptions and aspirations of a church's congregation. Holy Cow! Consulting uses this data to help church leadership better understand the challenges and opportunities in the congregation, instead of relying on "gut feelings". Churches who have partnered with Holy Cow! Consulting have been successful and highly satisfied in their transition outcomes.

The survey is tailored to our congregation and will take roughly 30 minutes of your time to complete. Please note that it must be completed in one sitting because it is a blind survey. If this is not possible for you, please request a paper copy that will be handled confidentially. The Transition Task Force recognizes the survey requires an investment of time for you and your family members, but we know how greatly you value Roseville Lutheran Church and its future. We acknowledge and appreciate your commitment to guiding Roseville Lutheran Church to better serve the community and even the world through its ministries.

To add a little fun, we will have drawings for small gifts and create a little competition between groups. More information to come!

If you are between the ages of 14 and 35, but maybe haven't had a chance to get involved, this is a great way to start because your voice is important! For the faithful members and friends who have in-

vested so much over the years, thank you for all you have done and please give us the benefit of your experiences at RLC. If you attend Roseville Lutheran and feel that this is your church home, even if you are not a member, let us know what you think!

After the survey results are compiled, we will create and share a summary with the congregation. We will use the results to guide small group discussions and collect more detail and ideas from the congregation.

The survey will be open February 1 through February 22, 2015. Look for the link on RLC's website to complete the survey electronically (preferred). Paper copies will be available at the Church Office and Welcome Desk to those who need them.

Simply Giving

An easy, generous choice

The Simply Giving Program is a simple, reliable way to make your regular contributions to the congregation through automated giving.

Contact the church office for more information.

It Only Takes One Invitation

Having moved from a small town in western Minnesota to the Twin Cities to start my first real job, I was driving along Larpenteur Avenue when I saw a sign pointing the way to Roseville Lutheran Church. I attended worship at RLC for a few Sundays when a long time parishioner turned to me and said, "You should join the choir." ME? Join a "big church" choir? I wasn't sure I could make the cut. But the following fall, I found myself in choir rehearsal (no audition needed) and enjoying making music with fellow singers. The choir members were welcoming, young and old, from a variety of professions, and all there to sing to the glory of God.

Becoming an active and involved member of a "big church" gave me the opportunity to meet new people in the Twin Cities. Many of those first acquaintances have turned into lifelong friendships. In almost no time, I found my way to being involved with the Properties Committee and then the Church Council. With Madrigal Dinners and Renaissance Festivals, the relationships grew in numbers. RLC's ministry opportunities allowed me to serve with Altar Guild, as a communion server, scripture reader, Facilities

Planning Committee Chair (Worship Center Building Committee), Congregational President, and Vision Slovakia Mission Trip leader. Through each committee or service activity my relationships with others grew, but more importantly my relationship with God grew and deepened.



God works miracles in and through each of us. Through my choir involvement, eight (then) young women sang together for 20 years as the "En-

Gang Til" octet. I am humbled to be a part of Vision Slovakia Mission field. Each trip to Slovakia brings people together that would only come together for that particular mission and ministry. Through Vision Slovakia, I found myself hosting a young Slovak woman for 3 months. When my parents passed away, my friends from RLC helped me carry my burden of grief. When job changes challenged my work ethics, it was knowing that GOD is the true judge through the relationships at RLC that got me through. And late in life, God arranged (it took years!) for me to meet and marry my loving and caring husband. And that young Slovak woman I hosted for 3 months was my Maid of Honor!

The friendships that are most dear to me are those forged through my involvement with RLC. God's plans for our lives take us places most of us could never imagine or plan on our own. It just took someone to turn and say "come join us" and for me to say yes!

Let me now be the one to ask you . . . What are you passionate about? What ministry area piques your interest? I invite you to take that leap of faith to get involved and to deepen your relationship with our loving God.

KJ (Olson) Bach
Involved in RLC since 1976

RLC News & Notes

Endowment Fund Grant Applications Due May 1

The Roseville Lutheran Church Endowment Fund enhances and extends the ministry and mission outreach of the congregation apart from the congregation's general operations. Gifts to the Endowment Fund are the "gifts that keep on giving." The principal portion of individual donations to Love Lights, memorials, and estate plan gifts remain in the Endowment Fund in perpetuity and the earnings are distributed as grants twice annually.

Grants from the Endowment Fund are awarded for seed money, education, capital projects, missions, benevolence, worship and music. Most recently the following grants were awarded:

- RLC Prayer Shawl Ministry – for expanded program outreach
- RLC Children's Ministry – for continuing education
- RLC Senior High Ministry – for Youth Ministry Certificate Program
- RLC Music Ministry – for piano restoration

If your ministry group is interested in applying for a grant from the Endowment Fund, please review the grant guidelines found on the RLC website (search Endowment Committee). Applications are due May 1.

Scouting News at Roseville Lutheran Church

by Michael Dolan, Chartered Organization Representative

February marks the 105th anniversary of the founding of the Boy Scouts of America. Troop/Pack 297 and Roseville Lutheran church also have a long history together, marking 59 years of RLC serving as the chartered organization of the Pack and Troop. On February 1, Troop 297 and Pack 297 will formally thank Roseville Lutheran Church as part of Scout Sunday. Scouting is based on the principles of being trustworthy, loyal, helpful, courteous, kind, obedient, cheerful, thrifty, brave, clean and reverent. These are all principles RLC shares with the Scouts and we thank RLC for their continued support.

Boy Scout Troop 297 invites boys ages 11

to 18 to join in the fun! The Troop has a history of community service to the Roseville area while enjoying great outdoor activities all year. For more information, contact Scoutmaster Galin Jones at galinlj@gmail.com.

Cub Scout Pack 297 includes boys ages 5 to 11. The boys are split into Dens, according to age, but also take part in Pack activities as a whole. Pack 297 is active in the community with food drives and other service projects but always finds time for camping and other adventures, including our annual Pinewood Derby race! Contact Cubmaster Ben Jones at b3n.jones@icloud.com for more information.

For more ways to get involved at RLC, please visit our website or give us a call!

Growing Through Loss Provides Grief Support

This 6-week series provides an opportunity for individuals to obtain information and support for a variety of loss and grief issues. Each session begins with an educational presentation by a professional from the community, followed by small groups facilitated by leaders who understand the grieving process. Although there is no cost, donations are welcome. Registration takes place each evening before the program. Church affiliation is not necessary.

Each session is complete in itself; attend any or all sessions. Free childcare is available, but please call a week in advance so they are prepared for your children. Call 763-755-5335 or visit www.growingthroughloss.org for more information. Roseville Lutheran supports this program financially and occasionally hosts it here.

The next series will be held Mondays, April 13 through May 18, from 6:45 to 9:00 p.m. at Abiding Savior Lutheran Church, 8211 Red Oak Drive, Mounds View, MN 55112.

American
Red Cross
Blood Drive

Thursday, Feb. 19
RLC Activity Center

Visit redcrossblood.org
to schedule
your appointment

Ongoing Events and RLC Groups

The Rose Enkas

The Rose Enkas will meet for lunch on Saturday, Feb. 15, at 11:30 a.m. at Panda Garden Restaurant at 1706 Lexington Avenue North, Roseville (phone 651-488-5505). The March date is Saturday, Mar. 21 at 11:30 a.m. at Outback Restaurant, 2181 Snelling Avenue North, Roseville (phone 651-697-1224); the April date is Saturday, April 18 at 11:30 a.m. at Olive Garden Restaurant, 1525 County Road C, Roseville (phone 651-638-9557).

This group provides support and fellowship for widows at their monthly luncheons. Call Kay Shurson at 651-766-6930 or Lori Bergman at 651-635-9563 for more information.

Prayer Shawl Ministry

The Prayer Shawl Ministry group meets the first Saturday of each month at the Underground Music Café on Hamline/Hoyt and the third Sunday of each month on the Social Hall Stage both at 10 a.m. Upcoming dates include:

- Saturday, February 7
- Sunday, February 15
- Saturday, March 7
- Sunday, March 15
- Saturday, April 4
- Sunday, April 19

All skill levels welcome! Contact Cindy at 651-487-0973 or cindybjerk@yahoo.com or Pam at 651-210-7843 or pammij@comcast.net with questions.

Prime Time

On Feb. 12, we will be entertained by the Golden Melody Makers Chorus as we enjoy pulled pork sandwiches, cheesy hashbrown potatoes, and dessert. On March 12, we will be entertained by Kevin Doely, a musical ventriloquist, as we enjoy lasagna, garlic bread, and dessert. On April 2, we will be entertained while we enjoy glazed ham, sweet potatoes, and dessert.

Prime Time provides fun, faith, fellowship and food to RLC senior members and friends. All are welcome. To make reservations, please call the church office at least a week prior to Prime Time at 651-487-7752 or sign up at the Welcome Desk.

RLC News & Notes

RLC Quilters Yearly Report

Our Quilters yearly report goes from January 1, 2014 to November 30, 2014, when we break for the Christmas holiday. Last year we gave pillows, children's quilts, nap quilts, lap robes, and large quilts to 13 different organizations: United Hospital, Ramsey County Care Center, Ramsey County Family Center, Bridging, Rose of Sharon Care Center, Union Gospel Mission, Roseville Lutheran Day Care, From Me to You, Women's Care Center, Jeremiah Project, Global Missions, Guatemala Orphanage Clinic, and three fund raisers. A total of 72 pillows and 357 quilts were donated.

We meet every week on Wednesday morn-

ings, except in December, from 8:30 a.m. to noon. There are many different jobs that need to be done to accomplish our goal of making quilts and pillows. Some jobs can be done sitting down, some standing up, and you don't need to know how to quilt to be welcome and useful in our group. If you can't get out to join us in person, we are also in need of people to cut squares at home. We will supply all the materials. An added benefit is to work with a caring and fun loving group of ladies, and a coffee break adds to the fun.

We would like to send out a huge "Thank you" to all of you that have supported us during

the years with material and donations, and especially to our much-appreciated janitors without whose help we could not carry out our mission. We are not planning on a quilt sale for a while, but we do have quilts available to sell on Wednesday mornings down in our quilting room in the basement of the original church for anyone that is interested. For anymore information about our group or buying quilts please call Muriel Anderson 651-484-2660 or Virginia Cronin 651-697-1856 or the church office.

- Submitted by the Roseville Lutheran Quilters

Preschool Registration Open

Registration for next year begins on February 2 for those families that currently have a student enrolled in school. (You may register any of your own children.) We will begin at 7:00 a.m. We will open registration to the Public on February 9, also starting at 7:00 a.m. Registration is accepted on a first-come, first-serve basis. Please call Cindy at 651-488-6887 for registration materials or go to Rosevillelutheran.org. You may either register in person or by mail.

Banyan Art on Display Through February

Banyan is an innovative approach to transforming community rooted in the Phillips neighborhood of South Minneapolis. This is a neighborhood in which 51% of children live in poverty. The neighborhood four year high school graduation rate is 47% (36% for African Americans, and 34% for Latinos). The median income for a family of four is \$34,000. The unemployment rate is 15%, and the poverty rate is 41%. Crime is a constant with gangs, prostitution, and drugs.

Banyan is a Christian community development organization in which youth, family and community are synchronized to achieve the great-

est impact. Youth attend programs to succeed in school, build life skills, develop assets, and cultivate healthy relationships. Family is strengthened with Banyan staff bringing together parents and children. Parents learn how to advocate for their children. Community is strongest when neighbors know each other and begin to care for each other. The Lighthouse Network is Banyan's brand of community building through block clubs. As a result of this work, the high school graduation rate of Banyan youth is 100%!

Artwork by Banyan students is currently on display between the Commons and the Social Hall.

Yogadevotion – Exercise for Mind, Body, & Soul

Come, give Yogadevotion a try – your first time is free with no obligation!

This Christian-based program combines yoga poses with gentle stretching to improve flexibility, range of motion and balance. Improve the health of your mind, body and spirit, all at once! Yogadevotion is held on Mondays, 6-7 p.m. in the Activity Center. The next session is March 2 – April 20; the following session is April 27 – June 22.

Wish to join in mid-session? No problem! No yoga experience is needed. Call the church office at 651-487-7752 to sign up or just come! Visit their website at www.yogadevotion.com. Cost is \$55 for 8 weeks.

Baptisms

Zachary Michael Palkowitsch and Jonathan Daniel Palkowitsch were baptized on November 9. Zachary and Jonathan's parents are Brett and Stephanie Palkowitsch. Zachary's sponsors are Matthew Blair and Nicole Palkowitsch; Jonathan's sponsors are Michael Ponsolle and Jessica Palkowitsch.

Micah Paul Ras was baptized on November 9. Micah's parents are Brent and Kate Ras; sponsors are Jay and Joni Spinger.

Alice Zeimet was baptized on November 22. Alice's parents are Amy and Paul Zeimet; sponsors are Brian and Julie Weber.

Ella Sophia Myers was baptized on November 23. Ella's parents are Chad and Sasha Myers; sponsors are Brandon and Lydia Myers.

Jorja Jean Gordon was baptized on November 29. Jorja's parents are Robert and Stephanie Gordon; sponsors are Sunnie Niklaus and Mike and Meredith Gordon.

Miles Isaiah Reding was baptized on November 29. Miles' parents are Chad and Anna Reding; sponsors are Justin and Abigail Main.

Ty Daniel Olson was baptized on December 5. Ty's parents are Darren and Danielle Olson; sponsors are Christopher Olson and Stephanie Hunter.

Britta Lindberg was baptized on December 6. Britta's parents are Adam and Kari Lindberg; sponsors are David Handeland, Kelly McMahan, Anders Lindberg, and Emma Lindberg.

Benjamin Andrew Theis was baptized on December 7. Benjamin's parents are Andrew and Cleo Theis; sponsors are Zach Moline and Shannon Dancho.

Annika Richter was baptized on December 20. Annika's parents are Sarah and Doug Richter; sponsors are Drew Freeman and Grace Freeman.

Madilyn Lorraine Gibson was baptized on December 28. Madilyn's parents are Matthew and Sharissa Gibson; sponsors are Dustin and Kayte Haaland and Jennifer and Joseph Fitzgerald.

Charles James Weston was baptized on December 28. Charles' parents are April and Jeremy Weston; sponsors are Jenny Weston-Newman and Rachel Newman.

Clara Anne Donahue was baptized on January 25. Clara's parents are Jacob and Kimberly Donahue; sponsors are Kraig Kuck and Carey Lueders.

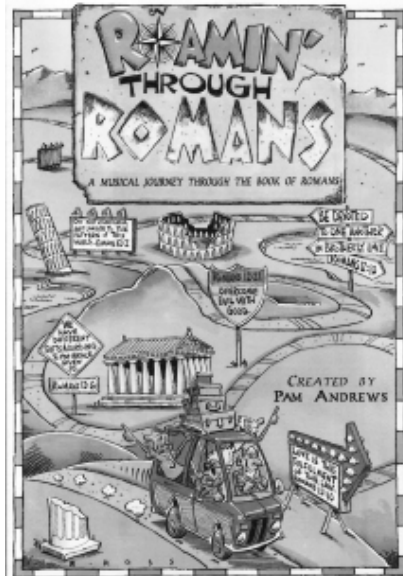
Isaiah Maurice Becker was baptized on January 27. Isaiah's mother is Krystal Woods; sponsor is Bobbie Olson.

Children, Youth & Family

Children's Ministry Musical on Feb. 15

Take a journey with the Apostle Paul and his friend Phoebe as they guide Mrs. McFaddle and Mr. Johnson's Cornerstone group on a field trip through ancient Rome.

"Roamin' Through Romans" emphasizes the important message of oneness and salvation in Christ. The musical will be performed at 9:00 and 11:00 a.m. worship. Please join us!



Parent's Night Out February 27

Are you a parent? Are you looking for an evening away from the kids? Then Parent's Night Out is for you!

Drop off your kids up through 6th grade at church on Friday, February 27, and enjoy a few of hours to yourself.

Parent's Night Out meets from 6:30 through 9:30 p.m and costs \$8.00 per child to a maximum of \$20.00 per family. The kids will enjoy a variety of activities including games, movies, snacks and crafts. No pre-registration required.

There is another Parent's Night Out lined up with a LIFE event in April - see page 16 for details!

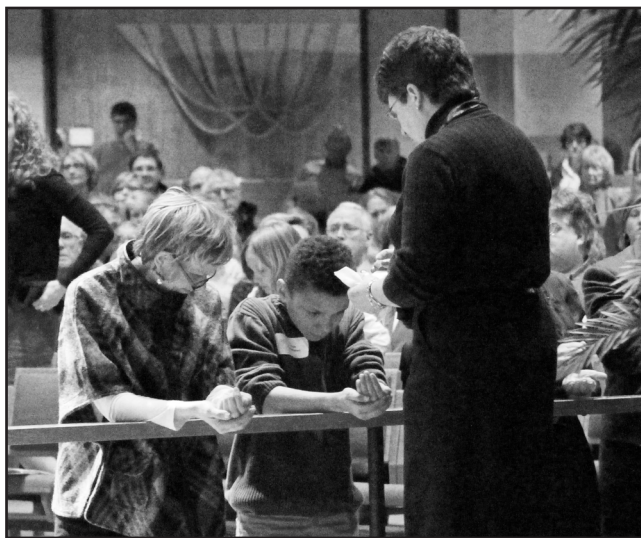
First Communion Workshop

by Kim Rehfeldt, Dir. of Children's Ministry

A First Communion preparation experience for fifth graders and their parent(s), or other significant adult, will be held Saturday, March 28 from 9:00 a.m. until noon. This workshop is also

open to any child whose parents feel they are ready to receive the Sacrament, not just fifth graders.

Workshop participants will receive their First Communion on Thursday, April 2, at the 7:00 p.m. Worship Service. Preceding the 7:00 p.m. Worship Service, all First Communion Workshop participants and their families are invited to experience a Seder Meal. This meal, which is representative of Jesus' Last Supper, will be celebrated at 6:00 p.m. Register online for both the workshop and Seder Meal at www.rosevillelutheran.org/firstcommunion by Wednesday, March 25.



Cornerstone Family Picnic

Mark your calendars for Sunday, April 26 to attend our third annual Cornerstone Family Picnic! Join us in the Activity Center at noon for fellowship and a fun lunch! Look for more information as the date nears!

Children's Ministry and Cornerstone Calendar at a Glance

- February 8 Family Serve Sunday – Serving Sandwiches
- February 15 Children's Musical presented in 9 and 11 a.m. Worship: Roamin' Through Romans
- February 27 Parent's Night Out
- March 13 Dance Through the Decades
- March 20 RLC Movie Night
- March 28 First Communion Workshop
"Palm" Sunday Gathering
- April 2 First Communion Seder Meal
First Communion received at Maundy Thursday Worship
- April 3 Family Good Friday Worship
- April 5 Easter – No Cornerstone, Luther League or RAW
- April 19 Family Serve Sunday – Serving with Passion
- April 24 Parent's Night Out & Couples Curling Event
- April 26 Cornerstone Family Picnic at noon
- May 3 Cornerstone Preschoolers sing during 11:00 a.m. Worship
- May 17 Last Cornerstone for this year
- June 15-19 MOVE! Vacation Bible School
- June 28-July 3 VLM Day Camp

Children, Youth & Family



Club Serve Project at Read Indeed

by Kim Rehfeldt, Dir. of Children's Ministry

On Saturday, January 10, ten young people and six adults went to the Read Indeed warehouse in Hopkins to sort and box books. Read Indeed is an organization led by 14-year-old Maria Keller that collects and distributes gently used and new books throughout the world. In five years, Read Indeed has collected and distributed more than 1.3 millions books.

The visit to Read Indeed was a Club Serve activity. Club Serve is a service group at RLC for kindergarten through sixth grade kids that participates in service at RLC and in the community. For more information about Club Serve, contact Kim Rehfeldt, Director of Children's Ministry at 651-487-7752, ext. 226 or krehfeldt@rosevillelutheran.org.

Watch your email and the Update for future Club Serve activities.

Vacation Bible School: We want kids to MOVE it!

No, seriously. MOVE it. From here to there. From bored to passionate. From selfish to giving. This summer, we're taking a look at the lives of some people in the Bible who changed direction and moved. Big time. And they all had one thing in common: somewhere along the way, they came face to face with Jesus. They discovered who He was. And once that happened, there was no standing still or going back.

Join us at MOVE IT Vacation Bible School for 3 Year Olds through 4th Graders from June 15 through 19. We will get mov-



ing each day from 9:00 a.m. until noon. The cost is \$10.00 per child to a maximum of \$25.00 per family.

Through music and songs, games, crafts, Bible study, active worship and much more kids will discover that spending time with Jesus moves them to a whole new place - and can even change the lives of those around them!

God moved toward us, first. Now it's our turn. Move!

Watch your email, weekly Update and Parenting Christian Kids Newsletter for more information and registration details in late February.

Voyageurs Lutheran Ministry (VLM) Day Camp

VLM (Camp Hiawatha) is bringing camp to you July 28 through July 3. Day Camp is open to kids who have completed kindergarten through 4th Grade and meets from 9:00 a.m. until 3:00 p.m. each day. The cost is \$70.00 per person.

The staff from VLM brings along everything needed for a week of fun that includes music and singing, Bible Study, snacks, games, arts and crafts, and worship. This is a great opportunity to experience summer camp without leaving home, so join us for a week of fun, faith and friends!

Don't miss out - sign up today at rosevillelutheran.org/children/vlmdaycamp.



RLC Movie Night

The next RLC Movie Night will be Friday, March 20 in the Worship Center. Popcorn and beverages will be served. The movie to be screened will be announced in early March.

Grab your family, friends and neighbors, bring your favorite chair or floor pillow (the pews aren't always comfortable) and join us for an evening of fun on the big screens.

Good Friday Family Worship Leaders Needed

Children's Ministry is looking for kids up through 6th Grade to assist with the Good Friday Family Worship on April 18, at 10:00 a.m. We are in need of ushers, narrators, actors, song leaders, and craft helpers.

If you would like to be a part of this inspiring worship, contact Kim Rehfeldt at 651-487-7752, ext. 226, or krehfeldt@rosevillelutheran.org.

Children, Youth & Family

Serving Sandwiches for Family Serve Sunday

by Julie Hanson, Asst. Dir. of Children's Ministry

Once again, we have an amazing opportunity at Roseville Lutheran Church to help our most needy. In February we will be making sandwiches again to support the ministry of 363 Days Ministries and Mr. Allan Law who delivers sandwiches each night to the homeless. We last did this in November 2013, making over 1,000 sandwiches in less than 20 minutes!

started by Allan Law. Mr. Law is a retired teacher from Minneapolis who began feeding homeless and families in need every evening in 1999. Mr. Law goes out every evening from 9:00 p.m.–5:00 a.m. to deliver sandwiches. He distributes an average of 1,600 sandwiches a night to individuals, shelters and locations serving the homeless. In addition, Allan distributes sandwiches that provide an extra meal for overnight residents to 10 Twin Cities partner organizations serving the homeless and poor in Minneapolis and St Paul.

The 363 Days Ministries name evolved from people asking Mr. Law over the years what he does on Thanksgiving and Christmas, since many organizations offer meals to the homeless on those two days. "I'll let

those organizations handle those two days, and I'll take care of the other 363 days of the year."

On February 8, Mr. Law will be at RLC to tell families about his ministry and to pick up the sandwiches we assemble. We will gather in the Activity Center at 10:10 for a short presentation by Mr. Law and then proceed to several tables to assemble 1,000 sandwiches. Families of all shapes and sizes are invited to participate in this event. Mr. Law will also be speaking at the Confirmation Sandwich event.

For those not familiar with this project, it is coordinated through 363 Days Ministries,



This year we are offering this opportunity to others on 3 dates:

- Tuesday, February 3: our FLOCK youth will assemble 150 sandwiches
- Wednesday, February 4: RLC Confirmation kids and leaders will assemble 1000 sandwiches
- Sunday, February 8: Families will assemble 1050 sandwiches for our Family Serve Sunday

For those not familiar with this project, it is coordinated through 363 Days Ministries,



What can you do to help?

Sponsor a Sandwich!

To defray the cost of the supplies needed to make these sandwiches, you are invited to Sponsor a Sandwich! For \$1/sandwich, you can sponsor the making of as many sandwiches as your family would eat for lunch on an average day. Contributions for this effort will be collected at the Welcome Desk, in the main office and on our website.

It is our goal to have people sponsor enough to make 2,200 sandwiches... please help us attain this goal! Checks can be made to Roseville Lutheran Church, with "Sandwiches" in the memo line.

It's up to US!

We have been challenged: "How will we respond to the call of Christ to serve our neighbor without fanfare and without getting credit?" Let's pray "Lord, show me what to do. Guide me to that one who has a need that I can meet, and then give me joy for saying yes. Yes to them, yes to you, yes to the call that you have placed upon my life." Let's experience the joy of helping others!

Where do I begin?

- Pray for those less fortunate and for those that reach out to them.
- Sponsor a Sandwich.
- Hear the message of Allan Law in the Activity Center on Feb. 8 at 10:10.
- Use your hands to help assemble 1,000 sandwiches at various assembly line locations.

Wrapped Up in Service

by Julie Hanson, Asst. Dir. of Children's Ministry

Thanks again to the generosity of Roseville Lutheran Church, many were blessed by The Big Wrap, our Family Serve Sunday event in January! Kitchen and bath bundles wrapped in ribbon were created to benefit clients of Bridging. Signed tags were attached to each bundle to make them more personal to those receiving them. Jill Peterson told us about the work of Bridging, a local organization that helps people get back on their feet by helping them to furnish their homes. Hearts and lives were changed by your generosity!

In addition to using our hands to help the clients of Bridging, those that attended this event also heard about Project Home and how



our church is helping with warm beds for families, and also about the opportunity to make sandwiches to feed the homeless in February. We were also able to deliver 100 beautifully decorated lunch bags to Meals on Wheels to brighten the day for those that receive meals with this wonderful program.

Family Serve Sundays not only bless the people that receive the fruits of our labor, but also bless those that participate. Serving side by side with other families and individuals from RLC is impactful and a LOT of fun! Join us on February 8 for our next Family Serve Sunday!

For more information about



Bridging, what items they collect, who they serve, and ways you can help, please go to their website, www.bridging.org.

Children, Youth & Family

Summerfest Youth Auction

by Marlane Maahs, Youth & Family Ministry Team

Come join us for our 4th Summerfest Youth Auction on Sunday March 1, 2015 from 5-7:30 p.m. at Roseville Lutheran Church. Be a part of this elegant evening to raise funds which will offset the cost of camp and mission trips for RLC youth! This will be a truly spectacular event that will include: dinner and dessert served by the youth, a gift card wall, a Youth Store with items made by our youth, a live auction, as well as NEW silent auction of "Great Gatherings" to encourage fellowship. Examples of these Great Gatherings are Wine Tasting, Girls' Night, BBQ, Card Making, Murder Mystery Night, Game Night, Mother/Daughter Tea, Brewery Tour, and much more. Currently we are in need of more Great Gatherings so if you are interested, please fill out the form on the

RLC SummerFest webpage with how many people can come and how much your gathering will cost per person. Then those who want to attend up to your limit can come. This takes the stress out of outbidding people!

The cost is \$15 for an adult and \$5 for children 5 & under. Additionally, you can purchase a table of 8 for \$110. Tickets will be sold each weekend after worship in the commons area or online. They must be purchased before the night of the event. For more information, to buy tickets, or volunteer, contact Michael Jordan at 651-487-7752, seniorhigh@rosevillelutheran.org; or Marlane Maahs at (651)491-3488, maahser@gmail.com OR check out the RLC Website at www.rosevillelutheran.org/summerfest. We hope to see you all there!



Senior High Winter Retreat

Join us for a night of fun on the slopes of Trollhaugen. Youth will get to ski or snowboard under the stars until the early morning! Registration forms are now available and are due to Michael by February 11. Invite your friends and have a great time enjoying the wonderful winter weather. Contact Michael Jordan with any questions.



Youth Summer Trip Registrations Due Feb. 8

Registrations for all of RLC's youth summer trips are due Sunday, February 8. Going to Camp, the Boundary Waters, or a Mission Trip is an experience unlike any other. It is amazing to witness how God can be present in so many ways and connect with you in new ways as you grow in your faith. We have opportunities for youth currently in grades 4 - 12 from ranging from our day program for 5th & 6th graders (Summer of Service), weeklong bible camp for 4th - 9th Graders (Camp Hiawatha), Mission Trips for 7th - 12th grade, and our high ad-

Senior High Calendars

FLOCK: Our High School Youth Group - 90 minutes of faith, fun, and fellowship on Tuesday nights in the Great Hall.

- Feb. 3Sandwich Project
- Feb. 10.....SummerFest Youth Store Projects
- Feb. 17.....Phone Bank
- Feb. 24.....Fellowship Night
- Mar. 3SummerFest Wrap-Up
- Mar. 10.....Reflective Worship
- Mar. 17NO FLOCK
- Mar. 24.....Bible Study - What's it all about?
- Mar. 31Easter Egg Hunt!
- Apr. 7.....Movie Night - Space Jam!
- Apr. 14.....Free the Children Speaker
- Apr. 21.....Bible Focus - Dance with Me
- Apr. 28.....Feed My Starving Children

Bagels @ Dawn: Start your Thursday right with a delicious breakfast, great friends, and morning devo at the St. Paul Bagelry. Need a ride to school afterwards? Michael you drive you in the church bus!

- Feb. 5:Katie M. & Phil M.
- Feb. 12:Grace R.
- Feb. 19:Julie H.
- Feb. 26:Kim R.
- Mar. 5:Sara S.
- Mar. 12:Tom B.
- Mar. 19:NO BAGELS
- Mar. 26:Kim R.
- Apr. 2:Michael J.
- Apr. 9:Dave B.
- Apr. 16:Julie H.
- Apr. 23:Kim R.
- April 30:Emma B.

Adult Education

Adult Education Opportunities

by Mary Erickson, Adult Ed. Ministry Team Chair

Adult Education Ministry seeks to help each person at RLC grow in their faith in Jesus Christ. We do this by planning and promoting classes, Bible studies, small group experiences, speaker's forums, and other learning opportunities.

We continue Bible Studies and 10:10 Faith and Fellowship during RLC's ministry year of "Go" with the following:

February 1 and 4: Book of Philippians Bible Study

Led by Susan Christopherson. Sunday at 10:10 meet in the North Lounge and Wednesday at 6:30 p.m. meet in Room 40.

Philippians 4. GO. . . "stand firm in the Lord" "and rejoice."

The word for joy or rejoice is used 16 times in this letter. Paul writes "whatever is . . ." about 10 times - and says "put it into practice." The Christians in Philippi had made promises, and Paul was eager they continue to follow through as they had before - again and again.



February 1: Lydia Place

Led by Pastor Scott Simmons.

Lydia Place Collaborative Communities is a Synodically Authorized Worshipping Community of the ELCA located in the Creative Enterprise Zone surrounding the intersection of Raymond and University in Saint Paul. The mission of Lydia Place consists of two separate but interconnected endeavors: 1) To establish an open and public collaborative vocational community dedicated to empowering and equipping people to develop their God-given gifts in a way that maximizes their vocational potential in the rapidly changing economic marketplace. In essence, we are a religious organization that provides a place and a community to boldly explore how one's life and faith can



give meaning and purpose to our economic activity. 2) To establish an ELCA Word and Sacrament worshipping community primarily serving the growing population of artistic, hip, urban dwellers

drawn to the vibe and ethos of the Creative Enterprise Zone centered around Raymond St. and University Avenue along the new Green Line Light Rail system.

Pastor Scott Simmons is a 2012 graduate of Luther Seminary and the mission developer for Lydia Place. In addition to his development work, Scott served at Saint James ELCA in Burnsville as assistant pastor and administrator for the Center for Missional Leadership at Luther Seminary. Prior to seminary, Scott spent over 20 years as an award winning freelance writer/creative director in advertising and graphic design, working for clients as diverse as the American Cancer Society, American Heart Association, Disney Corporation and many others. He holds a BA in English from Bethany College, Lindeborg, Kansas and a MA from the University of Missouri School of Journalism.

In this year of GO we are offering a two-part series on Martin Luther. In February, Mary Jane Haemig begins the series; Walt Sunberg concludes it in April.

February 8: Luther's Revolutionary View of Vocation and Discipleship

Led by Mary Jane Haemig, Professor of Church History at Luther Seminary

Are some Christians better than others? Are some jobs or areas of work more Christian than others?

Martin Luther faced the same question and had a revolutionary answer. This session will consider how Luther elevated our view of all sorts of jobs and relationships and saw God at work in the most ordinary pursuits.



February 15: Luther and the Small Catechism

Have you ever thought about Luther's Small Catechism as a guide for Christian discipleship? And, specifically, as a guide for your own life? Consider how a small booklet, written almost 500 years ago, can inform your life today.

February 22: Taste and See

Led by Pastor Steve and Friends



Pastor Steve and 15 others from Roseville Lutheran Church will visit the Holy Land in early February. Come hear of their pilgrimage to the places where Jesus walked. There will be pictures, stories, and treats from Jerusalem to taste!

"Open your mouth and taste, open your eyes and see - how good God is. Blessed are you who run to him." ~Psalm 34:8 The Message

March 8: The Embodiment of God in the World

Led by Dot Probst

Throughout Bible history God took on natural and human forms, allowing people to personally and vividly experience God, while instilling them with hope, courage, and faith. In this hour we will look at God intimately coming to people in these various forms, meeting their needs and entering their limited human perceptions of themselves and their world. Today God is embodied in our world as the Spirit indwelling us, Christ's body, while we meet the needs of people within our community and throughout the world.



March 15 and 22: Our "Why" Questions

Led by Pastor Sara Spohr

These 2 sessions focus on the topic of our "Why" questions. Why do good people suffer? Why do my prayers go unanswered? Why can't I understand God's will for my life?

All opportunities are free and open to the public.

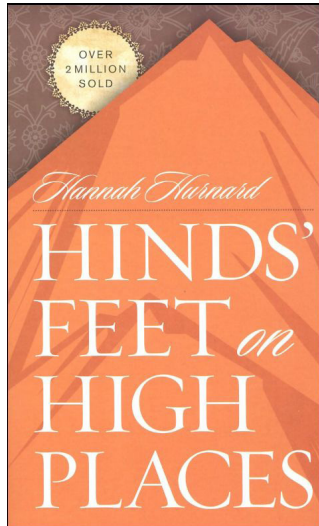
Invite a friend!

Adult Education

March 22 – May 10: *Hinds' Feet on High Places* Book Study and Discussion

Led by Jenny Carlson

Spend 8 weeks discussing the book *Hinds' Feet on High Places* by Hannah Hurnard. It is an allegory dramatizing the journey each of us must take before we can learn the secret of living life on high places. The book is based on Habakkuk 3:19. "The Lord is my strength and he will make my feet like Hinds' Feet and he will make me walk upon mine High Places. It's a story of how "Much-Afraid" escapes from her fearing relatives and goes with the Shepherd to the high places where perfect love casts out fear. Also the lessons she learns along the way, acceptance with joy and bearing the cost and others, "Much-Afraid" demonstrates her growing faith and trust in God. Come join us as we find God's truths and promises for our lives.



March 29: Bega Kwa Bega

Led by Peter Harrits

Rev. Peter Harrits, Director of Bega Kwa Bega, will be speaking at the 10:10 hour on Palm Sunday. Hear him share what is happening in Tanzania with Bega Kwa Bega. Bega Kwa Bega meaning 'shoulder to shoulder' is the phrase used to describe our companion synod relationship with the Iringa Diocese of the Evangelical Lutheran Church in Tanzania.



Bega Kwa Bega is a joint ministry between communities of faith in the ELCA and ELCT whose purpose is to proclaim the Gospel of Jesus Christ, to extend Christian hospitality, and to strengthen relationships with one another through the shared practices of prayer, presence, and projects. Our companion congregation is Ng'ang'ange.

Diocese of the Evangelical Lutheran Church in Tanzania.

Bega Kwa Bega is a joint ministry between communities of faith in the ELCA and ELCT whose purpose is to proclaim the Gospel of Jesus Christ, to extend Christian hospitality, and to strengthen relationships with one another through the shared practices of prayer, presence, and projects. Our companion congregation is Ng'ang'ange.

April 12, 19 and 26: Martin Luther as Guide to the Christian Life

Led by Walt Sundberg. This concludes our two part series on Martin Luther.

Above all else, Martin Luther was a practical theologian and pastor who sought to give guidance to his fellow Christians on how to live their lives in faithfulness to the Lord. In these three weeks we will consider what Luther has to say about marriage, family, politics, suffering and death. Although he lived 500 years ago, Luther, faithful to the Bible, speaks to us today.



April 12 will concentrate on family. April 19 will consider politics and the tribulations of life. April 26 will concentrate on evil. For Luther the devil is the enemy and the spiritual symbol of evil. This is clear in the Lutheran hymn "A Mighty Fortress". "For still our Ancient Foe doth seek to work us woe; His craft and power are great and armed with cruel hate, on earth is not his equal".

April 19 – May 10: It's Not About Me

A Bible Study of First John Led by Dick Carlson



You are invited to bring an "open ear" to this four week study to listen to the testimony of the writer of this short five chapter book in the Bible. First John goes to the very core, the heart, of who God is and what it means that this God came in self giving love

in Jesus Christ, emptying himself on the cross, to bring Life (rather than death) to our fearful and self absorbed selves. Drawing out and sharing our own stories from our journey of faith, the hope of this study is that we can help each other to realize that we don't have anything to prove (because God loves us). Then we too, can empty ourselves of the need to prove our worth, and can live for a more valuable, and less anxious, purpose -- of loving God and our neighbor.

Additional Adult Ed. Opportunities

Wednesday Morning Bible Study

For years, members and friends of Roseville Lutheran Church have gathered on Wednesday mornings to engage in a spirited, pastor-led bible study. This study will resume Wednesday, September 10, 2014 and runs Wednesdays at 9:30 a.m.

Our format focuses on the texts for the coming Sunday each week. If the pastor is using the gospel, or the epistle, or the Old Testament reading for his/her sermon, that will be the scripture text we'll study on Wednesday. The pastor will already be preparing a sermon, your insights will help form the sermon, and by the time you get to worship, you'll already have insight for that worship time. Join us on Wednesdays...and you'll be Smarter by Sunday!

Online Classes through Luther Seminary

One aspect of deepening our relationships with God and one another in Jesus Christ is by growing in our own faith through education. RLC encourages you to participate in the variety of adult educational opportunities available. In addition, RLC partners with Luther Seminary's Lay School of Theology.

The Lay School of Theology is a program of informal, non-credit classes taught by seminary professors for lay persons who want to learn more about matters that relate to their Christian faith and life. These classes are held throughout the year online and at the Seminary. For more information on these opportunities, visit the Luther Seminary website.

For more information on these and other opportunities for Adult Ed. and fellowship, visit www.rosevillelutheran.org/adults

Mission & Outreach

I was hungry and you gave me food...

A million times!

The Mission and Outreach Committee is excited to announce that Roseville Lutheran Church has been invited to join arms with Incarnation Lutheran Church, and Hosanna Lutheran Church, to pack one million meals for Feed My Starving Children. This mobile pack will take place at Incarnation Lutheran in Shoreview from April 27 – May 1, 2015.

It is an enormous effort, involving 3,600 volunteers and contributions of \$222,000 over five days. What will a gift like this accomplish? It will only feed 2,740 kids for a year! And everyone who packs a single meal will become the hands of Jesus!

This is a great opportunity for whole families to give themselves away for two hours on an afternoon or an evening. Children as young as 5 years old and as old as 96 may join their hands in this effort.

Registration begins on Ash Wednesday, February 18, 2015. To learn more, or to register for the packing event, visit incarnationmn.org/serve/ministry-partners/hunger-ministries/fmsc.



City Girl Gone Rural

by Grace Gravelle, MDiv Intern

This is how I know God has a sense of humor. I have lived in the Twin Cities my entire life except for the one year I served as a Youth Staffer for the LCA, prior to the merger. Yes, I'm that old. That one year was in Columbia, SC, also a metropolitan area. BUT, as an intern, God sent me to rural Wisconsin; Hustler, WI, the "only one in the world." Things are a little different out here. Hustler is less than a square mile large and my two congregations that worship together, alternating buildings, have a membership of around 120. I am from a congregation of over 3,500 people back home!

All that aside, this year (Jan-Dec internship) has been incredible! I have loved the people here and have gotten to point them to Jesus. That is what we are called to do and I have loved being a part of that call in this place. Hustler is three hours east of Luther Seminary and about halfway between there and Chicago. I have wholeheartedly tried to embrace this place and the people. I have taken weekly pictures in the cornfield behind the church, invited the congregation to the parsonage for Shrove Tuesday Dinner, and eaten lunch with the quilters every week. I helped them start a summer lunch program for the children of Hustler and we fed them over 130 lunches in our 10 week endeavor.

Yes, life here is totally different, but yet the same; the people of God living the best faithful lives they know how to do, loving one another, and singing praises to God. Worship is quite traditional with a few totally different Sunday mornings thrown in; "That crazy intern!"

Serving God's people! Loving God's



people! Being God's People!

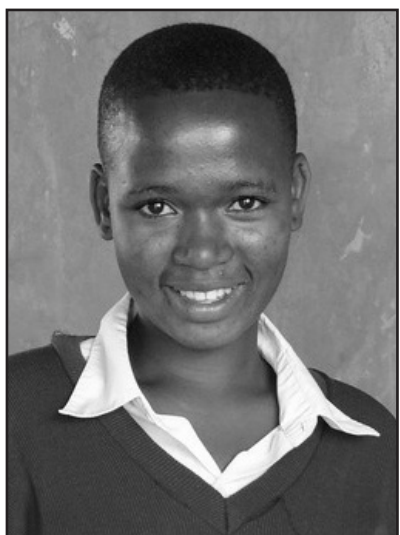
This article was in the Luther Seminary Concord. Grace, as a member of Roseville Lutheran Church, was financially supported in her studies by Mission and Outreach. Grace sends her thanks to the members of RLC for their continued support and prayers. She has just completed her internship, is currently in Berlin, Germany celebrating her graduation and will start interviewing for first call when she gets back the end of January.

School Year Begins for Tanzanian Students

by Dave Dudley, Mission and Outreach Ministry Team

Again this year RLC is sponsoring over 40 secondary school students from our companion congregation in Ng'ang'ange, Tanzania. Funds for this important ministry of our church come not only from the first fruits portion of the church budget which is administered by the Mission and Outreach Ministry Team, but also from the generous designated gifts of many RLC members.

These students attend several different church-run, state-run, and private boarding schools. All sponsorships are administered by the Bega Kwa Bega program of the St. Paul Area Synod (SPAS) in cooperation with the Iringa Diocese of the Evangelical Lutheran Church in Tan-

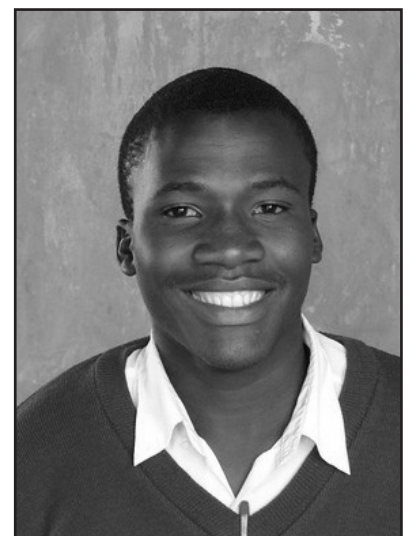


zania (ELCT). Pastor Ajenister Maliga has the responsibility to choose the most qualified students from her parish in Ng'ang'ange and then grant sponsorship funds based on fees at the student's school, factoring in the family's ability to pay. Financial support, therefore, varies from student to student.

Sponsoring these students is but one of several ways RLC is working together with our companion congregation in Ng'ang'ange, Tanzania, to strengthen our mutual relationship in a global ministry of service and Christian love.

On Palm Sunday, March 29, 2015, the Rev. Peter Harrits, Director of Bega Kwa

Bega, will return from Africa and give a presentation at RLC describing the wide scope and exciting future of the Bega Kwa Bega program. He is visiting schools and parishes in Tanzania during January, February and March, so his message will be timely. He will inspire RLC's continuing involvement with our companion congregation. Save the date to learn more about this amazing, shared ministry between Roseville and Ng'ang'ange.



Mission & Outreach

Global Health Ministries

by Renie Lellelid

Global Health Ministries is a Lutheran based organization that has been sending medical supplies to our hospitals in many countries throughout the world for almost 27 years. Our last and largest warehouse is on Hickory street in Fridley, MN.

GHM receives hospital equipment from most States. Every day (except weekends) donated good are unloaded and distributed to different areas of the warehouse. Each box is opened and the Rough Sorting crew of about 20 check each item for its usability and necessity. All the items find their way to the Fine Sorting Room, Instrument/Lab, Equipment and Repair/Recycling, Linens/New Born/Hospice, and General Area. On the Tuesdays that I work there are usually about 40 volunteers grouped together to check, sort, box and present each labeled box to be put through the computer with contents and number of items.

Our biggest challenge this year has been sending very needed supplies to our 2 Lutheran hospitals (Curran and Phoebe) due to the Ebola epidemic. If you listened to the national news one morning in September you would have heard that the first two organizations that were quick to respond to the needs in Liberia were Samaritan Purse and Global Health Ministries of Fridley, MN! We were on the TV three mornings in a row. We have indeed sent out two shipments by air each containing five pallets each of the most needed supplies. Also two 40 ft. sea containers, and again lately

20 pallets of food. All have arrived safely and been put to use.

Each of the 19 countries included in our giving are all in great need. By the end of the year we hope to have sent out 15 containers filled with the equipment that you would find in most US hospitals.

I want to thank RLC for the financial help you have generously given in buying and sending these containers. The total shipment expenses to one hospital in Tanzania was \$20,678.



Thanks to the RLC Knitters that have showered beautifully knit baby caps to be included in the New Born kits. What joy that brings the mothers to receive such gifts.

Thanks to the RLC Quilters who have made numerous quilts that are first used to surround delicate lab equipment to be packed for shipping. On the 'other side' hospitals, dispensaries and clinics make quick use

of them, and many are passed on to the patients.

Thanks to those that give time for sending out the GHM Newsletter. People learn of how their gifts are being used, and what is most needed. It's full of news! Several RLC members are listed in the 275 volunteers that have helped in the sorting areas, and packing the 40 ft. sea containers.

Before Scott Lein puts a huge padlock on the back container door for the 2-3 month trip, we are called into a circle to pray God's blessing on every item sent, and blessings to each person in "Helping the Hands that Heal."

Thank You All,
Renie Lellelid

The Dwelling Place Seeks Donations After Holidays

At Christmas, when Mission and Outreach of Roseville Lutheran delivered the gifts from the Sharing Tree to The Dwelling Place, we said that we are willing to continue to partner with them in helping meet some of their immediate needs. This is a Christian safe home for abused women and their children. Please call or e-mail Mary Schultz- 651-644-15534 mh8gaschultz@q.com, if you can donate any of these items: scientific calculator, space heater, CD player, vacuum, TV antenna, Clorox wipes, and kitchen garbage bags.



The Dwelling Place



If you are interested in serving in Roseville and beyond, please contact a member of our Mission and Outreach team. Members can be found on our website under Ministry Staff.

Music

Join the Festival Choir for Holy Week and Easter

Plan now to join the Festival Choir and sing for worship on Palm Sunday, Good Friday and Easter Sunday – rehearsals begin on Wednesday, March 11. It's a great way to get involved in singing without joining the choir full time. Rehearsal schedule as follows:

Wednesday	March 11	7:45 to 9:15 p.m.
Wednesday	March 18	7:45 to 9:15 p.m.
Wednesday	March 25	7:45 to 9:15 p.m.
Sunday	March 29	8:15 a.m. choral warm-up 9:00 a.m. Palm Sunday worship
Wednesday	April 1	7:00 to 9:00 p.m.
Friday	April 3	6:15 p.m. rehearsal 7:00 p.m. Good Friday worship
Saturday	April 4	9:30 to 11:00 a.m.
Sunday	April 5	8:15 a.m. choral warm-up 8:45 and 10:00 a.m. Easter worship

Winter and Spring Music Events 2015

Get out your calendar and mark down these exciting concert opportunities at RLC in the coming months! For ticketed events, please visit the website of the performing organization for more information and to purchase tickets.

Saturday, March 7 at 7:30 p.m.
Concordia College Choir, Moorhead MN** - Michael Smith, conductor

Sunday, March 29 at 4:00 p.m.
Metropolitan Symphony Orchestra - William Schrickel, conductor

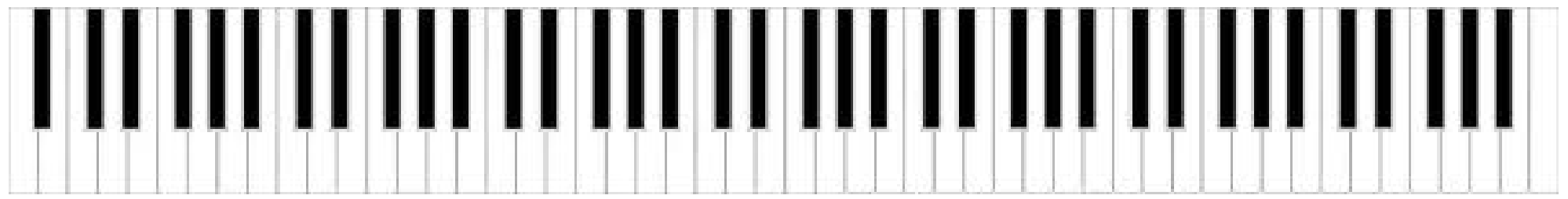
Sunday, April 12 at 4:00 p.m.
Women's Chorus event - Kathy Romey, conductor

Saturday, May 2 at 7:30 p.m.
Minneapolis Youth Chorus - Patricia Arasim, conductor

Saturday, May 9 at 7:30 p.m.
Wayzata Symphony Orchestra - Marlene Pauley, conductor

Saturday, May 16 at 7:30 p.m.
Minnesota Oratorio Society** - Matthew Mehaffey, conductor

**Ticketed concerts – all other concerts no admission charge and open to the public



Hospitality

Lenten Soup Suppers Served Beginning February 25

Please join us Wednesdays during Lent from 5:30 - 6:30 p.m. for dinner! Salad and dessert will be available buffet style, and soups will be brought to your table. Servers will ask which soup you would like. Dinner is \$7 per person, and punch cards may be used. Please note that soups may change due to availability and freshness of ingredients. If you are interested in helping out one Wednesday - or more than one! - please call Colleen at 651-487-7752.

February 25: Chili con carne w/cheese & Chicken noodle
March 4 : Butternut squash & Garden vegetable
March 11: Clam chowder & French onion
March 18: Chicken wild rice & Tomato basil
March 25: TBD

(It ain't just about the soups!)



Breakfasts will continue to be served the first Sunday of the month.

Please note that we do not serve donuts on the weekend of the breakfast.

The last breakfast will be May 3 (the weekend before Mother's Day); breakfasts will resume in the fall.

Also, please be sure to use your remaining punch card punches for breakfast and soup suppers. Punch cards expire June 1, 2015.

Finance Office

December Financial Summary

by Laurel Hofeldt, Director of Finance & Data

Your gifts make our ministry of sharing the message of Christ's salvation possible, and we are thankful for each and every gift given to RLC. Thank you!

Giving to our ministry plan is \$29,741 less than we had budgeted as of December 31, 2014. Total year-to-date receipts exceed expenses by \$54,155. The budgeted year-to-date surplus is \$22,009, meaning we are \$32,146 above our expected position at the end of the first half of the fiscal year. This is good news!

Please prayerfully consider what the ministry of RLC means to you and your family and how you will continue to support the vision God has laid before us.

Monthly financial summaries are available at rosevillelutheran.org/about/publications. If you have questions or would like additional information, please contact me at lhofeldt@rosevillelutheran.org.

RLC December 2014 Month-End Financial Summary



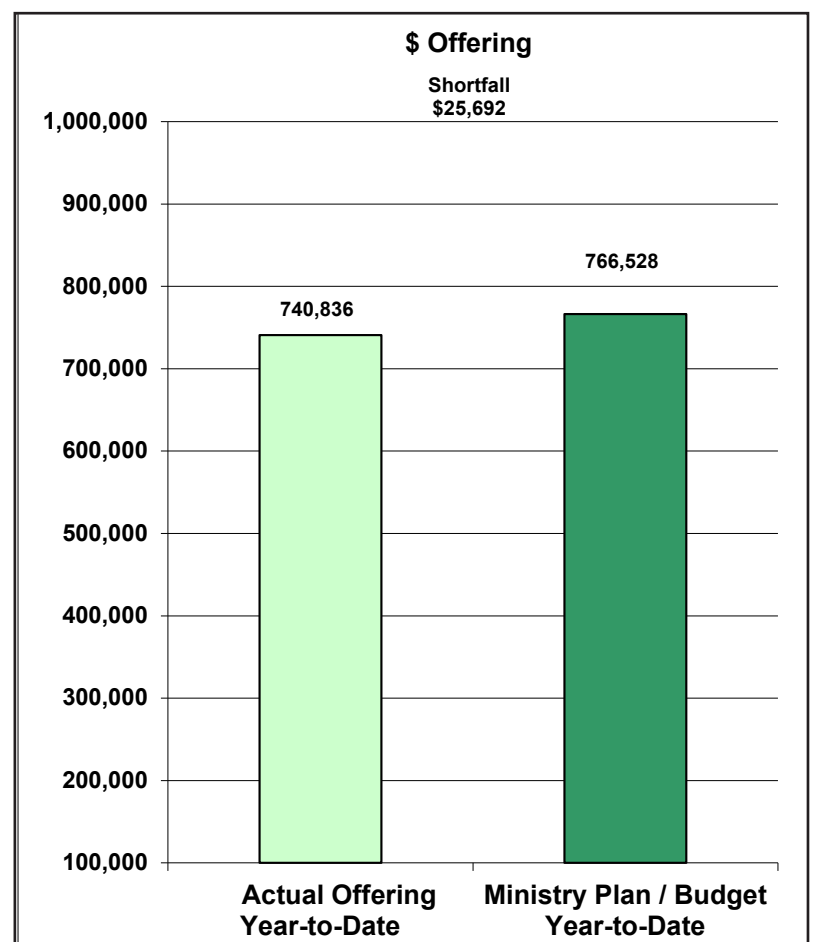
Thank you for investing yourself in our church home!

Church Operations 2014-2015						Prior Year	
	Dec Actual	Dec Budget	YTD Actual	YTD Budget	YTD Variance	2013 Dec Actual	2013-14 YTD Actual
Giving	202,277	195,209	740,836	766,528	-25,693	212,825	742,741
Other receipts	5,923	6,050	44,372	38,700	5,672	9,126	58,354
Total Receipts	208,200	201,259	785,208	805,228	-20,020	221,952	801,095
Expenses	130,083	143,944	727,005	783,219	-56,214	145,111	764,475
Net	78,117	57,315	58,203	22,009	36,194	76,840	36,620

Number of Givers 2014-2015				Prior Year		
	December		YTD through Dec		2013-14 YTD Thru Dec	
	# Givers	Avg Gift	# Givers	Avg Gift	# Givers	Avg Gift
General Fund	701	290	850	858	887	831
Bldg Designated	86	246	128	374	142	378
M&O Designated	23	55	144	151	181	155
Other Designated	115	58	252	221	210	160
Child Care	0	0	0	0	1	200
Preschool	1	260	2	375	2	35
Endowment	114	48	123	52	124	91
Total	743	320	916	943	980	893

Fund Balances 12/31/2014			
Available Cash & Short-Term Investments			347,586
Designated/Restricted Funds:			
	Building Fund	\$	45,733
	Kitchen Fund		208,174
	Memorials		35,655
	<u>Other Funds</u>		<u>119,880</u>
	Total Designated/Restricted		409,442
Preschool:	Current Yr	-1,568	-10,652
Child Care:	Current Yr	-7,466	-1,276
Operating Fund:	Current Yr	58,203	-49,928

Endowment Fund			
	Cash		12,158
	<u>Investments</u>		<u>404,347</u>
	Total		416,505



Christian LIFE

Curling & Parent's Night Out!

Have you ever wanted to try curling, the Olympic winter sport on ice with brooms and a stone? Linda and Donn Satrom will be hosting this Married Couple Life Group event on Friday, April 24 from 6:30 to 9:00 p.m. No experience is necessary. Instructions will be provided. Register early as ice space is limited.

Cost for Curling: \$30 per couple for curling, Limit 25 couples. Register for curling on our website.

Need a babysitter? This curling event is scheduled in conjunction with the RLC Parent's Night Out from 6:00 p.m. to 9:30 p.m. Children to sixth grade can join us for an evening filled with activities including movies, games, crafts, snacks, hanging out with friends and big time fun. The cost is \$8.00 per child with a \$20.00 family maximum. Meet at church, drop off the kids, and car-pool to the curling center.



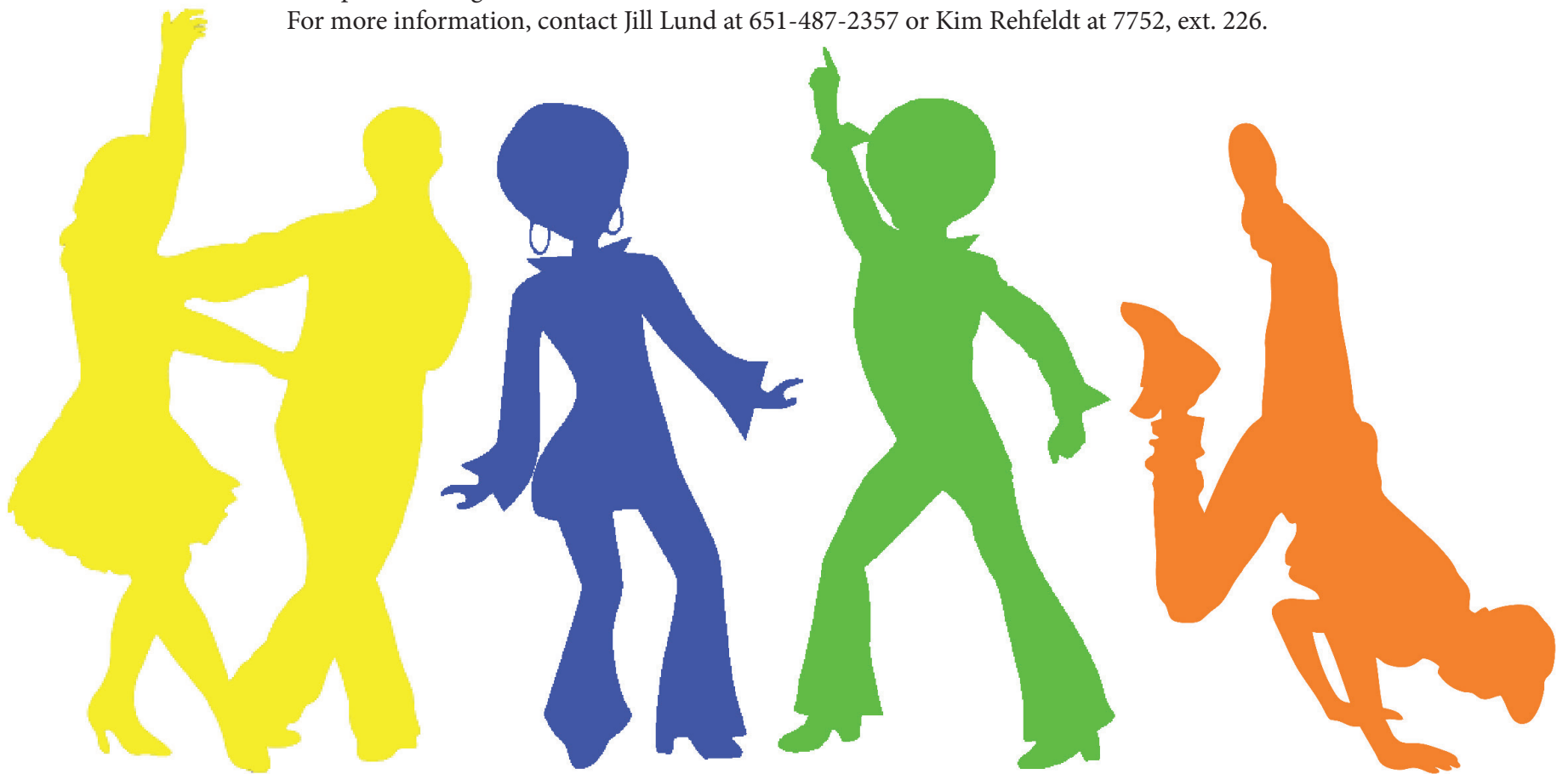
DANCE THROUGH THE DECADES

Get your groove on, come in costume in 50s, 60s, 70s and 80s clothing and dance to the sounds by our favorite returning DJ, Craig Farrell.

Join us at "Dance Through the Decades" on Friday, March 13 from 6:30 until 8:30 p.m. in the RLC Activity Center.

The cost is \$3.00 per person or \$10.00 per family. This will be fun for the whole family, so invite your friends, neighbors and grandparents. We will have snacks, a decorated photo-taking station and lots of dance, fun and exercise! Prizes for best dressed for each decade and best dancers.

For more information, contact Jill Lund at 651-487-2357 or Kim Rehfeldt at 7752, ext. 226.



RLC Lay Leaders & Staff

Pastors

Steve Molin, Senior Pastor
Sara Spohr, Associate Pastor

Hospitality Ministry

Connie Marchio, Hospitality Manager
Colleen Hopple, Hospitality Assistant

Music Ministry

John Helgen, Director
Martha Mutch, Organist
Sharon Boyce, Marys & Marthas Choir
Kristina Olson, Youth Choir
Lori Haaland, Handbell Choirs
Cassandra McNally, Children's Choir

Children's Ministry

Kim Rehfeldt, Director
Julie Hanson, Asst. Director
Tammy Heiple, Nursery Supervisor

Child Care House

Sue Menier, Director
Linda Borgstrom, Asst.

Student Ministry

Michael Jordan, Director of Senior High Ministry
Abby Matter, Director of Middle School Ministry

Facilities Ministry

Stephen Henry, Campus Manager
Arlen Rystrom, Building Engineer
Shelton Ingram, Custodian
Mary Jo Schaumburg, Custodian
Britney Ballweber, Custodian
Jessica Hunt, Facilities

Ministry Support Staff

Dave Booms, Church Administrator
Laurel Hofeldt, Director of Finance and Data
Amanda Chavis, Communications Mgr.
Kay Berthiaume, Financial Assistant
Diane Daulton, Financial Assistant
Jan Harbour, Administrative Asst.
Pam Klenz, Administrative Asst.
Julie McManus, Administrative Asst.
Linda Satrom, Administrative Asst.

Preschool

Cindy Laszewski, Director

Congregation Council

Kristin Olsen, President
Dave Hofeldt, President-Elect
Sara Mohn, Vice President
Jane Anfang
Lon Erickson
Heidi George
Janine Hughes
Kevan Moulton
Jim Stark

Nominating Committee

Mary Schultz, Co-Chair
Marilyn Shardlow, Co-Chair

Ministry Teams

Gena Mickley, Children's Education
Mary Erickson, Adult Education
Jill Lund, Christian LIFE
Erik Wolhowe, Mission & Outreach
Jim & Marlaine Maahs, Youth & Family

Endowment Committee

Mary Ann Bannerman, Chair