



1215 Roselawn Ave. W.
Roseville, MN 55113

NON-PROFIT ORG.
U.S. POSTAGE
PAID
TWIN CITIES MN
PERMIT NO. 2168



2013-2014 Annual Report Roseville Lutheran Church



**Annual Meeting
Sunday, June 29
at noon**

See page 11 for details



Report of the Interim Pastor

For when one says, "I belong to Paul," and another, "I belong to Apollos," are you not merely human? What then is Apollos? What is Paul? Servants through whom you came to believe, as the Lord assigned to each. I planted, Apollos watered, but God gave the growth. So neither the one who plants nor the one who waters is anything, but only God who gives the growth.
- First Corinthians 3:4-7

Exactly one year ago, I joined the Roseville Lutheran Church family as your interim senior pastor. It was a fragile time as this congregation was reeling from the departures of Pastor Craig Hanson and Pastor David Hanson, and there was deep concern for the present and the future of RLC. Perhaps the most poignant display of that reality came to me when I wandered into the kitchen during that first week, and one of those special kitchen volunteers said to me, "We feel like orphans here." More than anything else, that comment helped me understand.

I have spent much of the past 12 months building relationships and hopefully bridges to the future. However, when the past weighs so heavy, some cannot see the future. It is much easier to cling to the past that we know, rather than move into a future that is scary and unknown. So we hang on tightly to memories, and grudges, and biases, and former pastors, and shattered dreams. I think that's what Paul is saying in the verses above. I would coin it this way: The past belongs to the past, the future belongs to God!

So, just a few words about the past, and then some thoughts about the present and the future. Since last July, I've done roughly 50 home visits, and an additional dozen cottage meetings, listening to the dreams and disappointments of our people. If there is one common thread among all of these gatherings, it is this: "Roseville is my church." That's a powerful starting point for planning a future.

In the broader view, we spent some time as a congregation talking about stewardship, sexuality, and

staffing. We challenged ourselves to serve our neighbors as ourselves, and that service brought us to our church kitchen, to the Dorothy Day Center, and to Martin, Slovakia. I've done a few weddings, and more funerals than I have wanted, as we have said goodbye to members of this family. We have laughed together, cried together, eaten bread, drank wine, and laid stones at the foot of the cross together. We have more than just survived! We have come together. We have moved forward. We have disagreed and remained friends. We have trusted Jesus Christ.

As we turn to the future together, one of the oft-asked questions I've heard is this: "When will the new senior pastor arrive?" It's a question that I, too, have pondered. Before I speculate with a response, let me suggest some of the things that need to be addressed during the remaining interim period.

I will continue to nurture our staff, whom I value and respect (and you should too!). They are not perfect, but their hearts are woven with this congregation, and they serve God by serving you. Some I have reminded, "the best you can do is the best you can do." That is to say, if they use their gifts to the best of their ability, with their best effort, God will do the rest. And that's what they do every day!

We need to continue to work on the culture of generosity in this place. "Stewardship" seems to be a code word for "How much you gonna give?" I overheard one member say recently, "When mail comes from the church, I don't even open it because I know they're asking for money." Well first, the church is not they; the church is us. Always us. But more importantly, our asking and our giving should always be framed as a response to God's blessings. That's stewardship.

We must find ways to increase our levels of

communication: from staff, from council, and from our ministry committees. Furthermore, we need greater transparency: with numbers, with decisions, and with our plans for the future. As a result, I expect (and hope) that there would develop a deeper level of trust in our congregation.

Now, back to the question: "How long, O Lord!" While I am reluctant to say how long the interim period will last, I will likely write another REPORT OF THE INTERIM PASTOR. When the time is right, I will work with the church council to gather a transition committee, whose task will be to identify the strengths and growth areas of RLC. It will also

be a time to identify new visions and dreams of who we want to be in the future. The end game will be to create the Congregational Profile. This then will be handed off to a call committee, who will identify a candidate to recommend the congregation call as Senior Pastor. I commit to stay as long as this takes, yet stay no longer than necessary.

I want to thank you for the privilege of serving as your senior pastor during this interim time. We began one year ago as nervous dance partners, not fully knowing what to expect. Over time, we found a rhythm together, and though still stepping on one another's toes from time to time, we have done God's work together. One day in the future, a new dance partner will be sent to the good people of Roseville Lutheran Church, asking, "May I cut in?" And we will say, "Yes, by the grace of God!" May it be so.

Respectfully submitted,



Pastor Steven Molin

Assoc. Pastor for Children, Youth & Families

There is one item in my office that I value above all others. In fact, it never even gets too far out of my reach; it is the Roseville Lutheran Church picture directory. One of my favorite things about this book is the pictures of the children. If you take a look at the pictures of young parents with their infants, you will clearly see the love, anticipation, and great hope in their eyes. In most of the pictures, children are held in the arms of their parents, or the parents have an arm on their child's shoulder. These images of children being held or simply touched by their parents are indicative of the deep love parents have for their children. They also represent the deep love that God has for each one of us; we are his very own children.

People were bringing little children to him in order that he might touch them; and the disciples spoke sternly to them. But when Jesus saw this, he was indignant. In the gospel of Mark he says to them, "Let the little children come to me; do not

stop them; for it is to such as these that the kingdom of God belongs. Truly I tell you, whoever does not receive the kingdom of God as a little child will never enter it." And he took them up in his arms, laid his hands on them, and blessed them." - Mark 10:13-16.

In the first century, there was not a very positive attitude about children. They didn't talk about "sweet, innocent children." Children were commonly viewed as "immature and undisciplined." Knowing this, it isn't hard to understand why the disciples thought it best to keep the children away from Jesus. But people were bringing their children to Jesus "so that he might touch them."

Every time the word "touch" is used in Mark, it is part of a healing. These children were brought to Jesus because they were sick and in need of his healing touch. This is not the picture of sweet smiling children coming to Jesus as seen in so many paintings. This is a picture of children with runny noses, puffy

eyes, and sad faces. These are God's children, and we are God's very own children too!

We are challenged as a church to find places for God's children to see and touch Jesus. My call as Associate Pastor for Children, Youth and Families is to help people see and touch Jesus and grow in relationship with Jesus. I love this story from Mark because it reminds me of my call: to explore ways that, like the children and families in our directory, God's children can be wrapped in his arms, held firmly by His grace, and be touched with the power of his life and love.

I am thoroughly enjoying getting to know all of the great people who call Roseville Lutheran Church home. As I page through the directory and meet (face to face) more and more people, I know I am looking at and meeting the children of God. I am thankful to be part of such a remarkable family. I anticipate many great things in the year and years ahead.

In Good Faith,



Pastor Sara Spohr



Pastoral Care Ministry Report

Although the following year has been one of change, we continue to reach out to one another in compassion and service. Turnover in pastoral staff does not mean we stop caring for one another at Roseville Lutheran. In that vein, our Care Ministry Team continues to serve many and log more volunteer hours than other care teams associated with Lyngblomsten in the metro area. We had 16 partners this year in Care Ministry with 19 members devoting their time in service. These members were commissioned at one of our worship services in February. Our Care Ministry Team logged between 200-300 hours of service on a quarterly basis throughout the year. Ken Groth has joined Naomi Miller as a co-leader of this team. Ken will also be joining with Pastor Kris to revitalize the Visitation Team that delivers communion to those who cannot come to church. We continue to focus on ways to expand the membership and visibility of these teams.

Faith Partners Ministry has taken a break for the year as we reassess the need for our services

within our community as well as what role we might play in the broader community in the role of addiction education and recovery.



The prayer shawl knitters, the prayer team and the quilters provide care to not only our members, but to those far beyond our walls. We recognize that physical

and spiritual well-being are vitally connected in many different ways and God uses both our hands and our prayers to help nurture one another.

At the end of this ministry year, we bid a thankful and fond farewell to our Parish Nurse,

Judine Pattinson, who has gifted us with her gentle spirit and tender care. Judine has been a vital part of our ministry teams, contributing with assessments and visitations and the coordination of various health related activities within the life of our community. We wish her well and will look for ways to ask our community of faith to step up and use their hearts and hands to fill needs within our congregation.

As we enter the year of "Go" in our church's ministry vision, areas of care ministry are involved in seeking ways to bring Christ to those in need of tender words, healing touches and small kindnesses. We look forward to the next year with excitement and hope as we continue to grow together in Christ's love and light.

Blessings,

Pastor Kris Kurzejeski
Pastor Kris Kurzejeski

Health Ministry Report July 2013 - June 2014

by Judine Pattinson, RLC Parish Nurse

Our Parish Nurse has been involved in a variety of activities this year.

- She has been active in connecting with many of our homebound and folks with significant health issues. She has seen people in the hospital, rehab, care facilities and in their homes. She was instrumental in helping one client get connected to hospice care so that she could be supported in her wish to die at home.

- She is involved with the Care Team and in their initial health care assessment of new clients. She continues to provide support for the visitors as well as some of their monthly trainings.

- Blood pressures are now being offered at all four services once a month on the 1st weekend of every month. Up to 20 members on any given weekend have taken advantage of this service. Five to ten people on a weekend will also take advantage of this time to ask health-related questions.

- Honoring Choices (Advanced Directives) was held in June and again in November with support from the Endowment fund. Participants were very positive about the usefulness of the material in the workshop.

- Beyond Damascus was an 8 week summer program that encouraged people to combine spiritual growth with physical health activities. Intern Pastor Matthew provided in-house reflections to support this program. There were approximately 50 participants.

- Walking to the Cross was another successful program that combined physical and spiritual practices in a Lenten journey. Participation increased. There were 83 people who signed up. Many positive comments were received about the usefulness of the devotionals.

- She has participated as a co-facilitator with Pete Sherry for the pilot "Surviving the Holidays" program and then the continuing "Divorce Care" program.

- Blood Drives through the American Red Cross were provided 9/12, 2/20, and 5/29.

- She has provided health education articles for the *Table*.

- She was a presenter for one of the Bagels at Dawn programs.

- A Flu clinic was held in October 6 with the Minnesota Visiting Nurses Agency.

- She continues to be active in Lyngblomsten, Allina and Fairview Foundation Parish Nurse networks. They have provided free continuing education such as updated CPR training and additional training for the Honoring Choices including materials needed to provide training for the congregation. She is also connecting RLC with Lyngblomsten's newest "Gathering" program. This is a program specifically designed to support people with early to mid-stage dementia. This means that members and their families will have access to being given priority to participate in the program when needed.

- She has also been active in the Metro Faith

Community Nurse Network organization and is serving on their Education Committee. A side benefit to being on the committee is that the quarterly continuing education trainings are free to committee members. Roseville Lutheran will be the site for the June 2014 symposium. The topic is about abuse and we will have available for the congregation the T-shirt display honoring all victims who died of abuse last year.

- Yoga Devotion continued this year but will be taking the summer off as attendance is declining at present. They hope to start again in Sept.

- Enhance Fitness, exercise fitness classes for seniors, which was sponsored by UCare, is now being sponsored by Silver Sneakers. It will continue to be held 4 times a week.

Blessings,

Judine Pattinson RN, FCN



Roseville Lutheran Church Administration

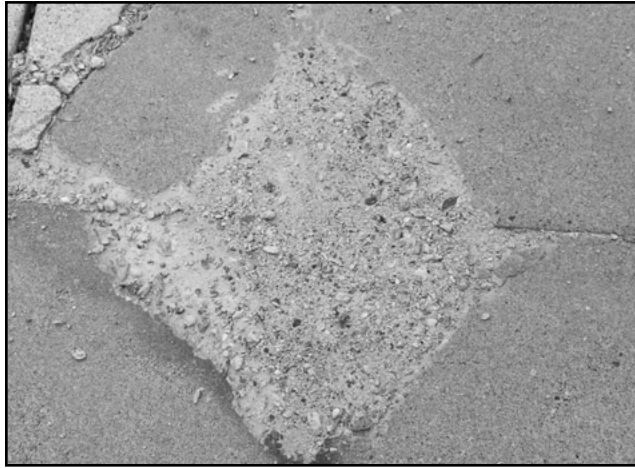
by David Booms, Church Administrator

From May of 2011 until February of this year I had the privilege of serving RLC and its pastors as the Pastoral Administrator and since February as its Church Administrator. The main purpose of this position is to support the vision, mission, ministry, and core values of the church in its day-to-day operations. The various department heads will write about what has happened in their ministry in the past year. For my inaugural annual report, I thought I would write about something that does not warm people's hearts the way that seeing the Children's Choir sing does, or in studying the Word, or the way in which a sermon might; I will be writing about RLC's infrastructure, those basic physical and organizational facilities needed to operate.

Now, a church is not the building where worship occurs; the work of the church is occurring all of the time, everywhere. Still, our facility stands as a focal point and meeting place for the work of the church, and volunteers, staff and the ministries they support are part of the organizational structure for the work of the church. You will read in all of the accompanying articles the many things done throughout the physical church. Spirits, minds, and bodies of members, non-members and friends alike have been nourished.

Let us start with the facilities. The picture of the crumbling sidewalk is not to say that our entire physical infrastructure is falling apart, but at any point in time parts of it are in need of care. (The photo was taken on our campus and yes, it is being addressed.) As Campus Manager Steve Henry pointed out in last year's annual report, an International Facilities Management

Association study concluded that a facility's annual deterioration rate is 2% per year. For older facilities or those that have not been properly maintained it jumps to 4% or more. The Facilities Development Committee's report by Rachel Japuntich will discuss the process



by which a master plan for the buildings and grounds was put together. In the meantime, carpets will eventually wear through, wood framed windows may not keep out the cold or water with just additional caulking or putty, a washer may no longer work despite repairs, or, in the obvious case of the sidewalk in the photo, a winter of numerous freezes and thaws will break concrete and asphalt down. Where there are infrastructure issues that impact health and safety concern, immediate action will be taken.

RLC has been blessed with dedicated volunteers and staff who work hard to make this a great place

to worship and do the work that the Lord has given us. A cheerful voice on the phone, a warm handshake, and a delicious meal, these are some of the things that your gifts of money and talent produce via the Office Support, Hospitality, and Welcome Ministries. The people that make up these ministries are part of the organizational infrastructure. Our greeters and ushers are among the more visible volunteers you might see each week. So are the people that serve the monthly breakfast. But did you know that people are putting together bulletins, CDs of sermons, and other informational items each week to mail out to those who cannot make it to church or do not have computers? Or that your bulletins are put together by volunteers? (Now down to two with the deaths of Joyce Hedin and Marion Hadler.) Please know that there are volunteers and staff that with warm and generous hearts care for the family and friends of those who have lost a loved one. As with the physical infrastructure, care is needed to keep these organizational structures going, so please consider joining one of these ministries.

With the Lord's guidance and support, my staff and I will continually strive, in the care of the facility and the programs supported with-in and with-out, to honor the gifts of the current and past generations that have chosen to call this their church home.

Blessings,

David Booms
Church Administrator

RLC Music Ministry

by John Helgen, Director of Music Ministry

*Make a joyful noise to the Lord, all the earth.
Worship the Lord with gladness; come into
his presence with singing.*
- Psalm 100

Many, many thanks to the musicians of RLC – singers, ringers, and players – for their participation in music and worship this year. It's a pleasure to work with you as we lead the congregation in song and add variety and enrichment to worship.

At present, we have four vocal groups (Senior Choir, Youth Choir, Children's Choir, Marys and Marthas Choir), two handbell choirs (Jubilate and Bells of Praise), three Praise and Worship ensembles, the RLC Brass ensemble, and RLC Jazz. These ensembles rehearse on a weekly or semi-weekly basis and are all involved in our worship services as well as other events. In addition, a large group of individuals serve regularly as soloists, cantors, accompanists, and various ensemble members.

There were many highlights from this past year. In June, RLC jazz provided music for the RLC run/walk/roll event, and later on in the month were the featured entertainment at the Taste of Rosefest. On September 7, RLC hosted a concert by local artist Peder Eide and his band. In October, the Metropolitan Symphony Orchestra and the Minnesota Chorale presented concerts on back-to-back weekends, and the Senior Choir and the RLC Brass Ensemble led our worship for Reformation Sunday.

In December, our Advent vespers services on Saturday evenings featured the "Holden Evening

Prayer" service. On December 14, the vocal choirs, handbell choirs, and brass ensemble were joined by organ and chamber orchestra for the presentation of our Christmas Festival Concert. Holiday concerts were presented by the Greater Twin Cities Youth Symphonies as well as the RAHS a cappella group. Various musicians and choirs assisted with our five Christmas Eve worship services. The last Sunday of the year featured RLC Jazz as the musical leaders for worship. On December 31, RLC Jazz again led New Year's Eve worship, which was followed this year by concert featuring vocalists Kathy Clarys, Jeff Johnson, Jeff Bowar, and John Helgen.

In January, cellist Maren Quanbeck presented a recital. On February 2, the Concordia Band of Moorhead, MN, played a concert at RLC. RLC Jazz traveled to Christiania Lutheran in Lakeville as well as Arlington Heights United Methodist in Maplewood to lead worship. On March 5, we began our Lenten journey with "Journey of Stones." The Festival Choir began rehearsals for Holy Week and Easter. On March 30, we enjoyed a visit from gospel singer Roosevelt Credit, who energetically joined with our Gospel Choir to lead music for worship, and we enjoyed an afternoon concert by the St. Paul Civic Symphony which featured RLC organist Martha Mutch.

On April 6, our Senior Choir and Brass Ensemble joined with the 96 voice Cathedral Choir from Luther College, Decorah, IA in leading music for worship as we installed Pastor Sara Spohr. Our Holy Week and Easter worship services included numerous soloists and RLC ensembles, as well as an Eas-

ter Choir made up of the Youth Choir and worship ensemble vocalists. At the end of April, the handbell choirs served as worship leaders, and Lori Haaland was recognized for 30 years of leading handbell choirs at RLC.

In May, we hosted a concert by the Wayzata Symphony Orchestra, which was joined by the Minnesota Boychoir in a program featuring Gershwin's "Rhapsody in Blue" along with two premieres of music by Minnesota composer Daniel Kallman. In June, members, spouses and friends of the RLC senior choir went on a choral performance tour of Europe.

These are some of the highlights of the many events of the year, and there were many, many participants who gave their gifts of talent and time to make it all happen. I am thankful for all of them. I'd like to give special thanks to our ensemble directors – Lori Haaland, Sharon Boyce, Kristina Olson, Elizabeth Windnagel, and Patrick Terry, for their service; to accompanists Marilyn Shardlow and Heidi Larson; to Martha Mutch, organist and Senior Choir accompanist; to our custodians – you guys rock!; to Cindy and Jim and Gayle and Dixie in the sound/video booth; to Connie Marchio and Colleen Hopple and all the kitchen crew; to Pastors Steve, Kris and Sara, and to Julie McManus and all the office staff for all their assistance. Thanks also to Jeff Bowar, Scott Henry, Jill Cordes, Lara MacLean, Paul Husby, Charles and Deb Scott, Erik and Matt Wolhowe, John Seal, and Bob Nielsen for their many special contributions.

And above all we thank God, who gives us life and breath to sing praises.

Roseville Lutheran Preschool

by Cindy Laszewski, Preschool Director

Every school year seems to go by faster than the one before! Our school year begins in August when the teachers visit their students' homes. The benefits of this somewhat daunting task are many. The children get a chance to meet their teachers where they are most comfortable – in their own homes. When students come to school on the first day, they are already familiar with their teachers. An Open House is held for each of the classes the week before school starts.



October was exciting with visits from the Roseville Fire department. The firefighters come in in their street clothes and then slowly put on their firefighting gear, explaining its use. By the end, the children are reassured that the firefighters look a little silly, rather than scary, and we should never hide from them.

In November, a special night is held for fathers, grandfathers, uncles, etc. for each of our classes. These nights provide an opportunity for one-on-one time for the students and the important men in their lives. A similar night is held in April for the special women in our students' lives.

November is also the month of our poinsettia sale fundraiser. It is the only fundraiser of the year. Our heartfelt thanks to Tom and Heidi Johnson, owners of A. Johnson and Son Floral, for their generous help and gracious service! The poinsettia plants are consistently beautiful.

December is always such a fun month to be with children. Each class had its own special program. The Great Hall is beautifully decorated and after a short program, there are wonderful treats for all our guests: Grandparents, Parents, Aunts, Uncles and the other

special people that come to share that time with us.

January is fun as we use our imaginations and pretended it is summertime!

February is always a lovely month with Valentine's Day parties.

Spring will continue to be a busy time for us as we make gifts for Mother's Day, enjoy outdoor bike day and the All School Family Ice Cream Social.

We have many to thank. We are very grateful to the Mission and Outreach committee for funds that help us maintain a great school that is affordable to all. We want to thank the Endowment Committee for funds that replaced our 23-year-old laminator - we love it! Thanks to Kim for leading Chapel once a month. We are also very grateful for those that give special gifts for scholarships. Sometimes things happen that make it difficult for some families to pay the full tuition. They are truly grateful that someone would help their children get the best start as they prepare for kindergarten.

Respectfully Submitted,

Cindy Laszewski

Cindy Laszewski



Roseville Lutheran Church Nursery

by Tammy Heiple, Nursery Supervisor

The RLC Nursery provides care for our youngest members so that parents are able to worship, learn and connect. While in the nursery, God's most precious gifts learn about Christ's love through playtime, prayer, stories, and crafts.

Our nurturing staff members provide care during worship services, classes, meetings, and special events. We host Parents Morning Out on Tuesday, Wednesday, Thursday and Friday mornings. During PMO, parents are able to work, run errands, connect with a friend, schedule an appointment, or simply catch their breath. Children in PMO build social skills and classroom skills to prepare for or supplement pre-school.

We are currently accepting registrations for the 2014 - 2015 school year. We are hoping to fill four or five days of PMO each week, so as to continue this valuable service and to raise funds to support child care for worship services and other events.

The Nursery is an important part of Children's Ministry. We have been blessed with dedicated staff that care for and guide our youngest members. Thank you to Heidi, Kay, Jamie, Sarah, Kristen, Shama, and Katherine for following your calling to work with our precious little ones. A special thank you to Lara and Jenny for being available to fill in at a moment's notice. Also, thank you to Margaret for volunteering to help on Sunday mornings. You are all a blessing to the children and families.

*Train up a child
in the way he should go;
even when he is old
he will not depart from it.*

~Proverbs 22:6

Lake Wapogasset Lutheran Bible Camp

by Rich Wendland, RLC Representative, Lake Wapogasset Board of Directors

"Celebrating Jesus and Kids!" That is the mission of Lake Wapogasset Lutheran Bible Camp.

Roseville Lutheran Church is one of about ninety churches comprising Lake Wapogasset Lutheran Bible Camp, Inc. There are four sites that make up the camp. The Lake Wapogasset site, located near Amery, Wisconsin, is a modern residential camp open year-round. The Ox Lake site, also located near Amery, offers a more international and rustic camping experience. Luther Dell, located on Boy Lake near Remer, Minnesota, is a residential camp open during the summer. Wilderness Canoe Base, adjacent to the Boundary Wasters Canoe Area at the end of the Gunflint

Trail, offers guided BWCA canoe trips during the summer. This was also the 5th year partnering with China Service Ventures in sending a team to China to run a youth camp.

Highlighting 2013, we welcomed the highest number of campers across all 4 sites! What a blessing to serve over 5,100 campers and guests. Year-round we hosted over 15,000 retreaters and guests. We met our Annual Giving Club goal of \$330,000 in 2013 and were able to provide over \$160,000 in camp scholarships. We are so grateful for those who support us with their financial gifts, prayers, volunteer hours, and gifts-in-kind. It is the generosity of others that allow us to move

forward in ministry with high quality program, facilities, and staff.

Wapo hosts many events during the year to involve the member congregations and the local community. They include a St Croix River Cruise to support Luther Dell, a Memorial Day Pancake Breakfast to support Ox Lake, summer boat-in worship Sundays at the Wapo site for the residents on the lake, the Hackers and Whackers golf outing in July to raise money for camperships, the Ngede Challenge 50K adventure race to support Ox Lake, and the annual Christmas Dinner Theatre performed by the staff and members of the Amery community.

Children's Ministry

by Kim Rehfeldt, Director of Children's Ministry

As the 2013-2014 ministry year comes to a close, I look back on this year with awe at God's amazing work witnessed in the ministry to children and families of Roseville Lutheran and throughout the world. I also look ahead to the opportunities that God has laid before us to continue to grow in our ministry to and with children and families.

During this year of SERVE we worked to provide children and families with opportunities to serve the church and others and to learn how serving is truly an expression of faith. One way that this was accomplished was through Family Serve Sundays. Julie Hanson, Assistant Director of Children's Ministry, and Michael Jordan, Director of 5th through 8th Grade Ministry, teamed up to offer four serving

amazing work of Bridging. Families then assembled kitchen and bath bundles for Bridging clients and decorated lunch bags for Meals on Wheels.

- Maria Keller, the 13-year-old founder of Read Indeed, a nonprofit literacy organization, shared her passion for helping others to read. We collected over 1000 books for Read Indeed to be distributed locally and worldwide. We also had three of our own teenagers, Tyler Peterson, Theresa Hofeldt, and Emily Devaney, share their stories of serving.

In addition, I began with a small group of kindergarten through fourth grade young people who have been quietly serving behind the scenes at Roseville Lutheran. These nine kids have been serving RLC through Club Serve, helping with mailings, updating the pew pads each month, making care packages for shut-ins, and much more. Through Club Serve they are learning about serving their congregation and that people of all ages can serve others.

However, ministry is about so much more than serving. One of my favorite Bible verses is Micah 6:8 which states, "He has shown you what is good. And what does the

Lord require of you? To act justly and to love mercy and to walk humbly with your God. Another favorite passage is Luke 10:27-28 which says, "Love the Lord your God with all your heart and with all your soul and with all your strength and with all your mind"; and, 'Love your neighbor as yourself.'" "You have answered correctly," Jesus replied. "Do this and you will live."

As I look around at the ministry to children and families I see these scripture passages lived out every day. It is in the 50+ teenagers who are involved in leadership roles through Cornerstone and Summer Son-sation. It is in the hundred or so volunteers of all ages that were a part of the Children Ministry Garage Sale. It is in the families that gather for the First Communion Workshop and Seder Meal. It is in the musical "Holy Moses." It is in highlighting a favorite scripture passage in the Bibles we give to our third graders. It is in parents and grandparents mentoring a faith-filled life for each of our little ones. It is in the true joy and wonder expressed on the faces of those third graders when they explore those Bible for the very first time.

We are moving into the fourth year of our focus on CONNECT, GROW, SERVE and GO, but this is not where it ends. This focus is cyclical, for as we GO we will CONNECT with new people. Which will push us to GROW deeper in our own faith. Which will encourage us to live our faith through SERVICE. Which spurs us to GO into the world to CONNECT others to Christ. My goal is to increase the opportunities at Roseville Lutheran to equip par-



ents to make faith life a part of daily life in the home, to train up the next generation of servant leaders and to reach out to those who have not heard the Good News.

Julie Hanson has served as Assistant Director of Children's Ministry for eight years now. Her main responsibility is Cornerstone, however, she partners with me in so many other areas of Children's Ministry. I truly appreciate her insights, partnership in ministry and faith in action. She is God's faithful servant, and I am blessed to share in ministry with her. Together, we grow in our passion for bringing God's word and action to children and families.

I recently celebrated the 25th anniversary of my certification and commissioning as an Associate in Ministry of the ELCA. Most of those 25 years have been spent at Roseville Lutheran Church. I continue to be blessed by this congregation. Thank you for your continued support and encouragement of me, but more importantly, thank you for your dedicated support for nurturing the faith of children and families. In the year ahead, it is my prayer that God will continue to bless RLC as we serve God in ministry to the community and brings Christ's light into the world. Praise God!



experiences for children through 8th grade and their families. These Family SERVE Sundays included:

- focusing on how serving begins with prayer and experiencing prayer in four different ways at stations throughout the building.
- Allan Law of 363 Ministries shared his passion for feeding the homeless. Families then gathered in the Activity Center and assembled 1,000 sandwiches to be distributed to the homeless.
- Dave Tetzlaff from Mission and Outreach shared about what this ministry does and about the



Youth Ministry

by Michael Jordan, Director of Senior High Ministry

What a year! Youth Ministry is always exciting and affords many wonderful opportunities. God is at work with the youth, families, and the congregation as a whole here at RLC. In my first year, I have felt very welcomed, and I am looking to continue building a brighter future with RLC and our youth!

5th-8th Grade Ministry

Luther League: Our Sunday morning youth group for 5th & 6th graders. This year, we focused on characters in the New Testament as we gathered around the re:form curriculum. It was always a rousing morning in Heritage Hall as we talked about the 12 disciples, Mary & Martha, John the Baptist, and many more. Luther League could not have happened without our wonderful leaders: Kelly Landucci, Scott Larsson, and Nicole Lewis. Thank you for loving our kids!

RAW: Our Sunday morning youth group for 7th & 8th graders. We worked on enhancing the lessons learned in Confirmation by focusing on the New Testament. It was a great time, and was made fantastic by our wonderful leaders: Ana Burgers and Jack Elfstrom. Thanks for being amazing!

Family Serve Sundays: In this year of SERVE, we had four Sundays in which families were invited to serve together. We started off with "Serving Begins with Prayer." Families journeyed to different stations throughout the church to discover ways that prayer can be a great way to serve others. In November, we made over 1,000 sandwiches in record breaking time with "Serving Sandwiches." We partnered with M&O in February for "The Big Wrap," and concluded the year with "Serving with Passion!" It was wonderful to hear from our own youth – Emily Devaney, Theresa Hofledt, and Tyler Petersen – how they are currently serving with passion!

Club 56: Our monthly 5th & 6th grade community events were a blast! Our events this year included Ultimate Frisbee, Bowling, Caroling, Sledding, FMSC, and kickball. Thank you to all the parents and adults who helped chaperone and drive to these events.

Friday Night Live: Our monthly 7th & 8th grade community events were phenomenal! Events this year included a Halloween party, Capture the Flag, Grand Slam, Skating, Mall Scavenger Hunt, FMSC, and kickball. A special thank you the Maahs Family for hosting us in January, and thank you to the numerous parents that helped make all these events a success!

First Communion: On Maundy Thursday, RLC

during our Large Group along with the help of Theresa Hofledt and Jake Kostecki. This year, we worked on the New Testament with our Confirmation youth. I was pleased with the patience of families with the start of Confirmation this year. The feedback and



support you have given throughout the year especially during the three parent meetings has been really helpful in shaping the future of the Confirmation program at RLC. A tremendous "THANK YOU!" goes out to all our Small Group Leaders for making the commitment to be here every week and journey alongside our youth, and congratulations to our 9th graders who were confirmed in May!

Lock-IN: We had a prodigious Lock-IN this year that featured a comedy hypnotist, giant inflatables, laser tag, and a pizza party. We were lucky to have Ben Richter lead our youth band for our midnight worship service. Huge thanks go out to the immense number of volunteers that helped make our all-night adventures a great success.

Camp Hiawatha: We had the largest number of youth go to camp this past summer! Campers enjoyed God's great northwoods as they deepened their faith. They had a tremendous time singing songs around the fire, going on overnights, swimming, and building bonds with each other that are timeless!

High School Ministry

FLOCK: RLC's Senior High Youth Group, which meets on Tuesday nights, had another incredible year. Our weekly rotation through Bible studies, service projects, worship, and fellowship nights, strengthened our friendships and opened us to new opportunities. Brian Heuer was a terrific volunteer leader this year along with Cecilia Moulton and Lillian Eldred.

Bagels @ Dawn: We continued the Thursday morning tradition of a bagel and devotion at the St. Paul Bagelry. We were blessed to have adults and youth alike share morning devotions before our youth headed off to school. Thanks to everyone who participated!

M.E.A. Getaway: As always, this was a fantastic weekend at Camp Castaway of deepening our relationships, connecting through the Bible study, and enjoying the beautiful surroundings of the lake and woods. This is a yearly highlight for the youth.

Guys/Girls Sleepover: We had a party at RLC this

year on two separate Friday nights for the High School men and women. They were both eventful evenings where we grew in fellowship as we talked about life and God.

Lenten Mentors: As we embarked on a Journey of

Stones during Lent, our High School youth paired up with adults from the congregation as their Lenten Mentors. Following the Wednesday services, they would meet 1:1 to talk about life and deepen their faith together. This was a wonderful way to connect more adults with youth in our congregation. Thanks to all who participated!

Boundary Waters: Youth spent a week paddling, portaging, and camping in God's great creation. We saw amazing wildlife, enjoyed the pristine lakes, ate delicious food, and soaked in the gorgeous sunrises and sunsets. Voyageurs Lutheran Ministry did an amazing job of guiding our Christ-centered adventure through the Boundary Waters. Jess Henry and Eva Janotova helped lead these trips into the wilderness.

Chicago Mission Trip: The Senior High youth headed to Chicago for their mission trip and served at the Roseland Community "Good News" Daycare Center. The youth had a blast working with the daycare children, doing work projects, and sharing God's love with everyone. They also watched the fireworks from Navy Pier and went to a baseball game! Thank you to Tom Berkas and Alex Loveland who served as adult chaperones on this trip.

It is silly to measure ministry and the growth of faith quantitatively; however, it is always nice to know we have youth participating, learning, and growing in their faith and friendships. So here is Youth Ministry by the numbers: Camp Hiawatha – 64 youth, 4 youth leaders, 2 adult leaders; BWCA – 7 youth, 3 leaders; Chicago Mission Trip – 12 youth, 3 leaders; M.E.A. Getaway – 20 youth, 4 leaders; Lock-IN – 40 youth; Graduating Seniors – 54 youth; Confirmation Class – 43 youth; First Communion – 24 participants.

The overarching wonder in all of these programs, events, and activities, are the fantastic volunteers. It would be impossible to do this alone, and I am so thankful and always pleasantly surprised every time someone steps up to serve with the youth ministry. I am excited to transition into my new role here at RLC as the Director of Senior High Ministry.

"For I know the plans I have for you," declares the LORD, "plans to prosper you and not to harm you, plans to give you hope and a future." ~ Jeremiah 29:11



youth and their families joined us in our annual Seder Meal. Afterwards, they received their First Holy Communion and shared bread that they had baked with the entire congregation.

Confirmation: Wednesday nights are so much fun at RLC. Bob Evanoff led the youth band this year

Mission & Outreach Ministry

by Erik Wolhowe, Chair, Mission and Outreach Ministry Team

This past year has been the year of SERVE and the Mission and Outreach (M&O) Team has kept this a goal throughout the year.

Objectives of MISSION and OUTREACH:

MISSION - - from Matthew 25:44 - 45 where Jesus tells us to minister to those who are hungry, thirsty, strangers, naked, sick, or in prison as if they were Jesus himself;

OUTREACH - - from Matthew 28:19: 'Go therefore and make disciples of all the nations, baptizing them in the name of the Father and the Son and the Holy Spirit.'

These two passages guide us and challenge us as a committee and as a church to help those in need and to reach out to those who have not yet received the message of God's salvation. Roseville Lutheran Church continues to accept the challenges of these passages and continues to strive to meet them in a very active manner. RLC can be proud that it allocates towards Mission and Outreach efforts a 10% tithe from all general giving. Much has been accomplished this past year and the M&O Team has worked diligently to use these funds as efficiently and effectively as possible.

Highlights from the past year include support of:

- 5 Seminary students in the US and 44 secondary school students in Ng'ang'ange, Tanzania;
- Vision Slovakia where 1 RLC member went to teach VBS, where 10 members went as part of a Builder's Group, and where we support Slavka Gulanova who is the school's administrator;
- Our missionary in the Republic of Cameroon, Elisabeth Johnson, who will be stateside this Summer and will visit RLC in July;
- Our camps at Lake Wapogasset and Voyageurs Lutheran Ministries;
- Our food/hunger ministries including the monthly Community Meal, Mountain of Love, Loaves and Fishes, Meals on Wheels, Keystone, summer lunches for Banyan, and our annual meal at the Hospitality Center for Chinese; and
- Our other outreach ministries like scholarships to the RLC Preschool, the Sharing Tree, MORE for immigrants, and safe houses like the Naomi Center and The Dwelling Place.

For the upcoming year, the M&O Committee looks forward to continuing the relationship with many of the same programs and special events, but of special note are the proposed classroom construction at our school in Tanzania and the joining with other area churches in the further development of the Community Support Center here in Roseville.

Many people deserve thanks for their commitment to the Mission and Outreach goals and for their efforts in achieving those goals. Among them are the committee members Dave and Karen Dudley, Dr. Dave Tetzlaff, Dot Probst, Dave Lorenz, Mary Schultz, Jill Peterson, Lee Diedrick, Kathy Miller, Curt Svidal, and Pastor Steve Molin. Also among them are others who have led ongoing projects: Janet Risinger, Hospitality dinner; Jim Stark and Brenda Thompson, Loaves and Fishes meals; and K. J. and Bob Bach, Slovakia Builder's Group. Many others have contributed their time and talents whose names are not listed here but are still very deserving of RLC's thanks. Special thanks go out to all those who worked on the monthly Community Meal: Chuck Laszewski and Mike Garbisch for their leadership, Connie Marchio and her staff for meal preparation, and all the volunteers who helped serve the meal. Although this meal will not be continued, RLC can be proud of its efforts to address hunger needs right here in Roseville.

RLC members are encouraged to learn more about the programs supported by M&O by attending 10:10 hour presentations held throughout the year, particularly in January, and by reading the monthly articles in *The Table*. Volunteer opportunities are available at nearly all of the agencies supported by RLC and members are encouraged to view the Serve Board or contact M&O Team members for information. Volunteers for the M&O Team are also welcome.

Mission & Outreach Budget for 2014-2015

Benevolence / St Paul Area Synod (SPAS)

ELCA Benevolence	\$25,000
Seminary Student Scholarships	\$15,000
Camp Wapogasset	\$3,000
Voyageur Lutheran Ministries - Camp Hiawatha	\$3,000
St Paul Area Council of Churches (SPACC)	\$1,500
SPACC - Board of Indian Works	\$500
Total	\$48,000

Church/Community Outreach

Discretionary Funds	\$4,500
Outreach for Spec. RLC Events (Welcome Wk etc.)	\$11,300
Community Services Center	\$2,000
Good Samaritan Fund	\$2,500
Bridging	\$2,000
Banyan	\$2,000
RLC Pre School Tuition Subsidy	\$3,000
Growing Through Loss	\$500
Lyngblomsten Pastoral Ministry	\$1,000
Total	\$28,800

Cross Cultural Ministry

Hospitality Center for Chinese (HCC)	\$2,000
PCYC - Designated for camping	\$1,000
MORE Multicultural and Empowerment	\$2,000
Total	\$5,000

Global Mission/Tanzania/Slovakia

ELCA Missionary Support	\$20,000
Iringa Secondary Scholarship to Ng'ang'ange	\$3,000
SPAS Companion Congregation Ag Program	\$1,500
SPAS Companion Congregation - Construction Prog.	\$1,000
International Seminary Student Scholarship	\$2,000
Tumaini University-Divinity student sponsorship	\$2,000
Operation Bootstraps Africa	\$3,000
Global Health Ministries	\$2,000
SPAS Companion Cong. - Ilula District Hospital	\$1,000
Global Health Ministries - Selian Hospital	\$1,000
ELCA Stand With Africa	\$2,500
Vision Slovakia - scholarships	\$1,500
Total	\$40,500

Hunger/Shelter Ministry

ELCA World Hunger Appeal	\$2,000
Loaves and Fishes	\$6,000
Meals on Wheels	\$1,000
Keystone Community Services	\$4,000
Union Gospel Mission	\$2,000
Family Place	\$2,000
The Dwelling Place	\$2,000
Total	\$19,000

Total **\$141,300**

LIFE Ministry

by Pete Sherry, Director of LIFE Ministry

When Pastor David Hanson and I first met in 2012 to discuss the possibility of me coming on staff at RLC, I was really excited. The position of Director of LIFE Ministry had so many elements that are my sweet spots—premarital education, counseling, small groups, and event planning among them—and after three years away from vocational ministry, I was ready to re-enter ministry in a church again. Thank you for making that possible for me. The past two years have been interesting, fun, and challenging in ways I didn't always anticipate, but I

am grateful for the opportunity to have been here. We've had some great LIFE Events, we've benefitted from the wisdom of several authors in our Home Groups series, and we've learned a bit more about what it means to do life together as we Connect, Grow, Serve, and Go as the church. Even though the Director of LIFE Ministry position is being eliminated, and this particular chapter of the life of Roseville Lutheran is coming to a close, I hope that you continue to do all that you can to be the Body of Christ in this place as you live LIFE together.

LIFE Ministry Events

LIFE Ministry Events are fun, energy-filled social activities that are held 3-4 times per year. They are opportunities for people with similar demographics to meet each other outside of the church building. The small group settings provide an outlet to connect with other adults and develop meaningful relationships while growing together in your relationship with God through Jesus Christ. You don't need to be a member of a LIFE Group as you would with many organizations. Rather, you show up and participate, get to know people, and build relationships.

The Roseville Lutheran Church LIFE Ministry Team, like many teams at Roseville Lutheran, is already planning events for next year. Some of them include an end of summer picnic, a family dance in January, a winter sleigh ride, a Valentine's Day dinner, and much more. Stay tuned for upcoming LIFE Ministry events.

Adult Education

by Susan Christopherson and Mary Erickson

SERVE! RLC chose this theme verse for the year of SERVE! found in New Testament in 1 Peter 4:10: "As each of you has received a gift, use it to serve one another, as good stewards of God's varied grace." 1 Peter 4:10 in ESV.

"Each of us has had the opportunity to be generous with the different things God has given us, passing them around so all get in on it: if words, let it be God's words; if help, let it be God's hearty help. That way, God's bright presence will be evident in everything through Jesus, and He'll get the credit as the One mighty in everything - again and again to the end of time. Oh Yes!" 1 Peter 4:10 in the Message Bible.

SO, here are some of the gifts served for you at Roseville Lutheran Church this past year!

This year we offered 3 tracks of learning and study and experience digging into God's Word.

Track # 1 was a series of 10:10 sessions to help us deepen our 'serve.'

** We opened the year in September and October with several sessions exploring biblical images of servant-hood to help us grow in our faith and life.*

"Improving our Serves" These images came from 1 Peter 4:10 - led by Pete Sherry

"Called to Serve: Biblical Insights for Christian Service" Deut. 6, Matthew 4, Mark 10, Philipians 2, Luke 10, Galatians 5; Romans 12, Colossians 3, John 10, and Matthew 25 led by Jim Boyce.

** November brought with it:*

"Learning to Pray with Martin Luther" led by Mary Jane Haemig from Luther Seminary. Luther advocated blunt, honest, and forthright prayer, and we had time to pray just this way!

** In December we began a 4 week series:*

The Gospel of John which came to life on screen in a drama of the Biblical Text. This DVD series of John's Gospel gave us accessible ways to see Jesus in action in compelling ways to help bring us into a more profound relationship with God by believing in Jesus as our Lord and Savior and following Him as He leads us. The Apostle Peter wanted Jesus to tell him what his fellow Apostle-John's life would be like. Jesus answered him, "... what is that to you? You must follow me."

** January brought Mission and Outreach Month and our Mission and Outreach Team shared 4 ministries with us:*

The Community Meal led by Chuck Laszewski and Mike Garbish for ones living in our neighborhood who experienced their care and energy and the wonderful meals provided by Connie Marchio and her Hospitality Team.

We got to know David and Schader from Slovakia talking about their experiences with the Center from Christian Education in Martin Slovakia as it has been a major influence in reestablishing Christianity in the lives of the people following the years of Communist rule.

We met Gail Cisi and friends from The Naomi Center which offers a recovery ministry to both single and married women with children and

provides a Christ-centered environment for them as they refocus their lives.

We heard from Cathy Rucci and Shoua Xiong about MORE - multicultural ministry who assists over 400 new immigrants and refugees find a place in our community in many, many ways!

** February and March could not have been more expansive in scope!*

The Big Wrap: a Roseville Lutheran Cornerstone Ministry for Bridging kicked off.

Walter Sundberg, our favorite Church Historian, highlighted the missionary lives of two men of God: William Carey who expended his life in India and Hudson Taylor who gave his life in China, each for Jesus sake.

The Creator God & The Creative: Artist's Sharing the Gospel - organized by Dot Probst. Dot led us to view Moses, David and Paul as Biblical Designers.

He Qi, indigenous Chinese Christian painter shared his art and his life as he found peace in Jesus! (Pictured.)

John Helgen, our Music director shared his vision, his pastoral voice as composer and musician.

Renie Lelleid, Evie Jacobsen and Joann Toso shared their call from God as missionaries and their individual and family lives spent for Jesus in Madagascar and in Tanzania.

** In April and May:*

Pete Sherry, Director of LIFE Ministry helped us discover the 'good' boundaries that help us live fulfilling lives sharing these laws of boundaries: Sowing and Reaping, Responsibility, Power, Respect, Motivation, Evaluation, Proactivity, Envy, Activity, and Exposure using scripture as foundation!

Our new Children, Youth and Family Pastor, Sara Spohr, led us on the "Road to Emmaus" with Jesus and 2 disciples. We learned from this Luke 24 text that here is a story that gives us visions for ministry in and out of the church and offers of Jesus' example of how we encounter and share the good news in our world.

Jim Boyce returned this spring to share "Hearing the Scriptures on same Sex Relationships: Bound Together in Diversity. He also made a study document available called "Journey Together Faithfully" to assist in understanding the biblical texts in the Bible and how different scholars studying the same texts, using comparable methods, can come to different conclusions.

** We continued into June as*

Cindy Bjerck shared her life experience on an 8 day Mission Trip to Haiti: to be His hands - His feet - His work - His love. "Let my heart be broken by the things that break the heart of God."



Track # 2 has been 3 - 7 week sessions in the Fall of 2013 and the Winter and Spring 2014 on a chronological reading and study of the Old Testament in a new a helpful way called "The Story."

This year we began a study of "The Story." Groups met on Wednesday evenings at 6:30 and Sundays at 10:10 for 3 seven-week sessions. The Story is the Bible, God's story.

This fall we studied Creation through Joshua, "The Battle Begins."

Our winter session covered the Judges - "A Few Good Men & Women" to "A Kingdom Torn in Two."

This spring we will finish the study of the Old Testament.

We have studied what happened in the "Lower Story" here on earth and also God's "Upper Story" plan to be in a relationship with us. We also discussed how we fit into God's story.

We are thankful for our leaders: Linda Borgstrom, Geri Skogen and Sandy Burwell on Wednesdays; Sandy Raup and Lon Erickson on Sundays and for the more than 60 people who have attended and contributed their valuable insights to this study.

This fall, 2014, we will study the New Testament with 10 sessions covering "The Birth of the King" through Revelation.

Track # 3 was a series of men's discipleship groups: focusing on scripture, prayer, following Jesus into action and discipling each other.

Don Sandborg and Greg Kroening led 2 different studies at RLC this past year.

The first is a year study on "Every Man a Warrior".

2nd is "Man Alive: Transforming Your 7 Primal Needs into a Powerful Spiritual Life." Don and Greg explain in practice: Small groups are for everybody, all the time. They keep us growing and accountable. Don't go it alone. God calls us into relationships with Him and each other! We all need a network of Christian friends we can confide in and ask to pray for us when difficult times come. They say, "How much better it is to have close Christian friends in the body of Christ Jesus."

Endowment Committee

by Dave Werner, RLC Endowment Committee Chair

RLC Endowment. . . "It's a gift that keeps on giving". This statement, a gift that keeps on giving, has been around a long time, but the meaning behind it seems to vary depending on how it is used. I once heard my mom refer to another of the side effects of Parkinson's as another one of Parkinson's gift that keeps on giving. Needless to say this was not a gift and certainly nothing you would ever want to keep on giving.

The RLC Endowment however is a positive example of a gift that keeps on giving that you can be proud to be associated with. Any and all gifts given to the RLC Endowment - the \$20 Love Lights donation, the \$100 donation made in honor of a special person, the \$5,000 donation made as a memorial of a loved one or the \$250,000 you have listed in your will - all provide a legacy gift that will continue making a positive difference into perpetuity. Prior to this year all funds in the RLC Endowment have been what we term un-designated gifts, meaning the financial gifts remain intact forever with each year's interest being used to fund projects as determined by the Endowment committee. Yes, five years, ten years or fifty years from now the principle portion of your gift remains in place with each and every year the interest being used to make a difference in funding multiple projects. Later in this article you will see the thirteen projects that have received Endowment funds in the past year.

This year the Endowment committee has spent a great deal of time updating its Charter, clari-

fying its goals, objectives and guidelines. One of the new options that is now being offered by RLC Endowment is the "designated" endowment gift. So, what is the difference between un-designated and designated? In its simplest of terms a designated gift means that as the giver of the funds you determine how each year's interest will be spent. Let me offer an example. (Remember, this is only an example and the purpose is determined by you when you set up the gift). For this example let's say you choose to provide Endowment with a \$50,000 gift from your estate and since hospitality was a very important part of your church involvement you want to have your funds impact the RLC hospitality program. Your gift would be established so the interest will always and only be used for Hospitality needs. In this example, the Hospitality committee would receive a check each and every year into perpetuity to fund a hospitality need that year - maybe new coffee pots, maybe new cutlery or maybe it replaces a dishwasher. Your gift would make a lifetime of difference in an area important to you. Now remember, you determine the area of ministry you wish to provide a legacy gift. (Banyan, Voyageurs, Mission Slovakia, Children's Ministry, Music - the list goes on and on.)

During the past year the Endowment committee has had the pleasure to fund over 13 projects using undesignated Endowment interest. These projects include:

* Mission trip to Haiti

* Banyan - student position for After School Program

* RLC Veterans Day service/dinner

* Global Mission Institute

* RLC preschool - laminator

* Enhance fitness class held at RLC

* Children's Ministry - children's worship bags

* Voyageurs Lutheran Ministry - convection oven

* RLC Run/Walk and Roll

* RLC Facilities and Hospitality - Social Hall curtains

* RLC senior high - camper-ships

* RLC design team - lounge podiums

* Graceful Journey - RLC parish nurse

A special Thank You to the three Endowment committee members whose terms end following the annual meeting. They are Sherwin Singaas, Carl Mohn and Rich Straumann. The commitment, dedication and leadership of these three committee members made a tremendous difference to this committee. Current members whose term continues include Tony Richter, Leanne Van Berkom, Mary Ann Bannerman, Matthew Hoffer, Richard Wendland, David Werner, and Council representative Janine Hughes. Thanks also to Pastor Steve as an ex officio member of the committee.

Anyone who would like to learn more about the RLC Endowment or options for making a designated gift can contact any member of the Endowment committee.

Praising The Lord,

David Werner - Endowment Committee Chair

Design Team

The Design Team continues to look for ways to Glorify God through Art and Design for an aesthetically and spiritually meaningful environment and to support the mission of Roseville Lutheran Church. We work closely with Steve Henry, Facilities Campus Manager. We also work with other ministry teams throughout the year providing input and support when asked.

A major focus this year has been completing the renovation of the upper level lounge. With the help of grant money from the Endowment Fund we were able to purchase 2 new podiums and update the electronics in the room for Adult Education. Fresh paint and new coverings over window openings, new carpet and art pieces were also added. This was

a collaborative project with input from Adult Ed., facilities, staff and the Design Team.

We also commissioned fiber artist Anne Anderson of "Interwoven" to create an altar cloth and two lectern cloths. These pieces accompany the beautiful 3 panel fiber art piece that hangs behind the altar that Anne designed and created for Roseville Lutheran Church 2 years ago. The two lectern cloths incorporate different liturgical colors of the year.

Another project completed this past year was installing vinyl cut lettering of scripture to the walls in the Social Hall. The scripture verses were selected by a team of pastors, staff and committee members to remind us that "God's Spirit Beckons" and that "where two or three are gathered in my name, there am I in the midst of them." (Romans 8:14 and Matthew 8:14)

We continued overseeing the rotating art exhibits in the hallway between the Commons and Social Hall and the Upper Lobby. A wide variety of art was displayed. We continue to look for local Christian artists to exhibit and welcome suggestions.



Facilities Development Committee

Imagine . . . a Christ-centered, welcoming, flexible, accessible, and sacred house of God that serves the intergenerational needs of our congregation and our community. The Facilities Development Committee wrapped up their work with Cuningham Architect Group developing an architectural plan that would enhance and improve our current campus. Last year Church Council formed the Facilities Development Committee to take a look at our church facilities and evaluate as a whole, areas for improvement. Council voted unanimously to hire Cuningham Architect Group to lead the process. The Facilities Development Committee and Cuningham Architect Group had several meetings over the course of the past year meeting with lay leaders and pastoral staff going through the current and future needs of the church. Cuningham Architect Group has taken that information and formulated an architectural design of our campus. Imagine... student and adult education spaces that are flexible for the different groups that meet with adequate storage. Imagine... a kitchen that is spacious with enough room for a whole crew of workers with storage facilities attached. These are just a few of the many improvements listed in the final report that Cuningham Architect Group has prepared that was presented to Council in September. At the September council meeting, the final architectural vision was presented; Council reviewed the recommendations and decided that major repairs to our existing facility and associated maintenance projects should be addressed first. The larger conceptual remodeling design was put on hold until a later date. If you would like more information or have any questions check out the Facilities Development Committee web page at www.rosevillelutheran.org/fdc/ or email the communications coordinator, Rachel (Cordes) Japuntich at corde063@umn.edu.

Annual Meeting Scheduled for Sunday, June 29

by Bryn Knatterud, Congregational President

The annual meeting for Roseville Lutheran Church is scheduled for June 29, 2014 at noon. The proposed agenda is as follows:

- | | |
|-------------------------------------|--------------------------------------|
| 1. Opening Prayer | 6. President-Elect's Report |
| 2. Review of Meeting Rules | 7. Vote to Extend Pastor Kris's Call |
| 3. Approval of Prior Year's Minutes | 8. Budget Proposal & Vote |
| 4. Election of Lay Leaders | 9. Report of Election Results |
| 5. President's Report | 10. Closing Prayer |

For current members it is important for you to attend and be involved in this important meeting that elects the future leadership, votes on how the church's resources will be spent and dialogues about the direction God is leading us. As we have done for the past few years there will be an opportunity for questions/comments at the end of the meeting.

I am confident that as long as our Lord Jesus Christ is at the center of all Roseville Lutheran Church does our future is bright.

Finance Ministry

by Laurel Hofeldt, Director of Finance and Data

Finances are a by-product of our faith, and our response to God's blessings in our lives. As we strive to move ever closer in our walk with Christ, we respond with our financial resources.

Thank you to the volunteers and staff who keep the finance office running smoothly! Counting teams come on a weekly basis to assure that the offering is counted in an accurate and timely manner. Kay Berthiaume processes payroll and assures that invoices are paid to our vendors and partners in ministry. Diane Daulton processes offerings, other income and bank reconciliations. The finance committee meets monthly to oversee, advise, and make recommendations to the Council regarding RLC finances. They review the previous month's financial summary and assist with preparation of the annual ministry budget. Being new in the role of Director of Finance & Data this year, it has been a blessing to partner with faithful and knowledgeable individuals who use their gifts to serve Christ through the finance office.

Proposed Budget 2014-2015

The Ministry Plan Budget for 2014-2015 is based on a conservative estimate for giving, with the offering amount showing slightly lower than what is budgeted for the 2013-2014 fiscal year. Once giving was estimated, expenses were matched to projected giving. This will mean decreases in staff positions for the coming year. These cuts were made thoughtfully and reflect the most important priorities for the congregation. If you have questions about the budget, please contact Kristin Olsen, President-Elect, at kristin.a.olsen@thrivent.com or Laurel Hofeldt, Director of Finance & Data at lhofeldt@rosevillelutheran.org or 651-487-7752.

The following is a more detailed listing of income and expenses included in each category of the RLC Ministry Plan Budget:

- Total Offering:
 - o General Offering (includes Christmas, Lenten, Easter)
 - o Special gifts to budgeted ministry areas (i.e. Cornerstone offering, initial envelope offering, Confirmation fees)
 - o Note: 10% of actual General Offering is distributed through Mission & Outreach for Benevolences and Outreach Ministry
- Other Receipts:
 - o Hospitality Income
 - o Thrivent Choice Dollars
 - o Interest Income
- Cost of Staff Positions:
 - o Salaries
 - o Benefits (Housing and Expense Allowances, Health and Disability Insurance, Pension paid by employer)
 - o Mileage reimbursement for staff and lay leadership
 - o Continuing Ed., Sabbatical and Subscription Expenses
- Worship & Prayer
 - o Music Ministry (choirs, musical equipment/tuning/repair, guest musicians, accompanists, worship band, music administration, licenses)
 - o Prayer Ministry and devotionals available to congregation
 - o Worship services (supplies, sound & video equipment, guest ministers)
- Mission & Outreach
 - o Welcome & Link Ministry (typically large congregational events which reach out to the larger community)
 - o Benevolences (ELCA, seminary student assistance, camp support, preschool tuition subsidy)
 - o Outreach (community outreach, cross-cultural ministry, global ministry, hunger ministry and shelter ministry)
 - o Note: 10% of actual General Offering is distributed through Mission & Outreach for Benevolences and Outreach Ministry.
- Education & Children's
 - o Children's Ministry (Cornerstone ministry, musicals, chil-

	2013-2014 Budget	Increase (Decrease)		2014-2015 Proposed
Total Offering	1,492,000	(8,400)	-0.6%	1,483,600
Other receipts	68,000	7,000	10.3%	75,000
Total Receipts	1,560,000	(1,400)	-0.1%	1,558,600
Cost of Staff Positions	1,084,311	(38,843)	-3.6%	1,045,468
Total Worship & Prayer	20,391	1,159	5.7%	21,550
Total Mission & Outreach	145,880	2,120	1.5%	148,000
Total Education & Children's	12,583	8,770	69.7%	21,353
Total Youth & Family	7,200	3,300	45.8%	10,500
Total Christian Life	48,550	11,850	24.4%	60,400
Total Program Ministry	234,604	27,199	11.6%	261,803
Total Sustaining Ministry	115,101	8,852	7.7%	123,953
Total Property Ministry	125,983	1,393	1.1%	127,376
Total Expenses	1,560,000	(1,400)	-0.1%	1,558,600
Receipts Over/Under Expenses	0			0

- o dren's worship, family ministry)
 - o Adult Education (10:10 Faith & Fellowship offerings as well as other Adult Ed. classes, Home Groups)
 - Youth & Family
 - o Senior High Ministry
 - o Middle School Ministry
 - o Confirmation
 - o Student and adult leadership & development
 - Christian Life
 - o Hospitality Expenses
 - o Parish Nurse Ministry
 - o Life Ministry
 - Sustaining Ministry
 - o Stewardship expenses
 - o Administration & Finance
 - Insurance (Property, Liability, Worker's Comp., Automobile)
 - Bank fees
 - Payroll processing fees
 - Business supplies (checks, deposit slips, etc.)
 - o Computer/Network (hardware, software, training, repairs, internet)
 - o Human Resources (job postings, background checks, call process, etc.)
 - o Office Support (equipment, telephone service, general office supplies)
 - o Printing/Publishing/Mailing (copy machine & digital duplicator, postage machine, postage expense, special paper)
 - o Communications (newsletters & annual report, advertising & signage, website development and maintenance, special projects)
 - Property Ministry
 - o Utilities (gas, electricity, sewer & water, property tax for green space)
 - o Cleaning, maintenance and building projects
 - o Grounds & parking lots (snow removal, equipment maintenance & repair, landscaping, parking lot maintenance)
 - o HVAC servicing and supplies
 - o Lighting supplies
 - o Security System (keys & locks, building alarm, fire alarm and sprinkler system)
- Please feel free to contact Laurel Hofeldt at lhofeldt@rosevillelutheran.org or 651-487-7752 x203 if you have questions or would like additional information.

Hospitality Ministry

by **Connie Marchio, Hospitality Manager**

This year has been an exciting and fulfilling one for me here at Roseville Lutheran Church.

Finance gave me a goal to reach and with the help of all the volunteers and the staff we met and exceeded that goal. We have also had several events, both as part of RLC's ministry and in assistance to outside groups, that proved we are a successful and flourishing church. Some of those events included Alpha International, Lutheran Braille Society, Thrivent, A.D.K., Graduation parties, U of M's OLLI (Lifelong Learning), weddings, Wednesdays @ Roseville, Lenten suppers, and many other special events.

My hope is to continue serving and representing the church through Hospitality Ministry. We already have several events booked for the coming year, and I look forward to serving them with the phenomenal volunteers that work side by side with me.

Thank you to those who attended our events this year! I would also like to thank the staff that I work closely with, especially Hospitality Assistant Colleen Hopple. I came from the corporate world and did not know how thoughtful and kind people really are. This staff supports me and helps me be successful. Thank you again.



Ciao,

Your Hospitality Manger,
Connie Marchio

The RLC Quilters' year is January - December.
For their report, please see the January 2014 Table.

RLC Lay Leadership Candidates

The Nominating Committee is pleased to announce the 2014 - 2015 slate of candidates for lay leadership positions at RLC! These candidates will be elected at the June 29, 2014 annual meeting. Should you have any questions, please direct them to communications@rosevillelutheran.org.

Council President-Elect

Dave Hofeldt



Council Vice President

Sara Mohn



Council

(L to R) Heidi George, Kevan Moulton, Jim Stark



Nominating Committee

(L to R) Judy Ekern, Rick Glubke, Alice Neve



Endowment Committee

(L to R) Mike Dolan, KJ Bach, Sara Richter



Adult Ed. Cmte. Chair

Mary Erickson



Christian Life Cmte. Chair

Jill Lund



Mission & Outreach Cmte. Chair

Erik Wolhowe



Roseville Lutheran Church Lay Leaders & Staff

Pastors

Steve Molin, Senior Interim
Kris Kurzejeski, Associate
Sara Spohr, Associate

Hospitality Ministry

Connie Marchio, Hospitality Manager
Colleen Hopple, Hospitality Assistant

Music Ministry

John Helgen, Director
Martha Mutch, Organist
Sharon Boyce, Marys & Marthas Choir
Kristina Olson, Youth Choir
Lori Haaland, Handbell Choirs
Patrick Terry, Children's Choir

Children's Ministry

Kim Rehfeldt, Director
Julie Hanson, Asst. Director
Tammy Heiple, Nursery Supervisor

Child Care House

Sue Menier, Director
Linda Borgstrom, Asst.

LIFE Ministry

Pete Sherry, Director

Student Ministry

Michael Jordan, Director of Senior High Ministry

Facilities Ministry

Stephen Henry, Campus Manager
Arlen Rystrom, Building Engineer
Britney Gritche, Custodian
James Henry, Custodian
Shelton Ingram, Custodian
Mary Jo Schaumburg, Custodian
Chris Taylor, Security

Ministry Support Staff

Dave Booms, Church Administrator
Laurel Hofeldt, Director of Finance and Data
Amanda Nelson, Communications Mgr.
Diane Daulton, Financial Assistant
Kay Berthiaume, Financial Asst.
Jan Harbour, Administrative Asst.
Pam Klenz, Administrative Asst.
Julie McManus, Administrative Asst.
Linda Satrom, Administrative Asst.

Preschool

Cindy Laszewski, Director

Parish Nurse

Judine Pattinson

Congregational Council

Bryn Knatterud, President
Kristin Olsen, President-Elect
Jane Anfang
John Davis
Lee Diedrick
Lon Erickson
Janine Hughes
Maren Schultz

Ministry Teams

Gena Mickley, Children's Education
Susan Christopherson, Adult Ed.
Larry Gunderson, Christian Life
Erik Wolhowe, Mission & Outreach
Jim & Marlane Maahs, Youth & Family

Endowment

David Werner, Chair