

THE TABLE

A QUARTERLY NEWSLETTER FOR THE FRIENDS
AND MEMBERS OF ROSEVILLE LUTHERAN CHURCH

MARCH • APRIL • May • 2017 celebrating 75 years!

COME, GATHER BENEATH THE TREE OF LIFE

LENT AT RLC

SARA SPOHR, ASSOCIATE PASTOR

Some of my very best memories have happened in the forest. Camping in the tall pines of northern Minnesota, building forts in the grove just outside our farmhouse and climbing trees with my friend in Tanzania are just a few of those memories. When I was a kid, the drive we took to our grandmother's house was literally "over the river and through the woods." I have grown closer to God in those trees, I have grown closer to friends and family hiking through those trees, and I personally feel healthier and more spirit-filled when I am in the trees.



The Japanese have a word for this — *shinrin-yoku*. Forest bathing. They've known for a long time what researchers are only beginning to prove now: that spending time in the woods is good for us. It lowers our blood-pressure. Reduces cortisol levels. Increases the cancer-fighting white blood cells. Makes us breathe deeply and smile and know that all is well, at least for a while.

Have you ever thought about the fact that the Bible begins and ends in a garden, around a tree? This tree is often called "The Tree of Life." God provides this vast and amazing creation for us, God gives us charge over it, God asks us to care for it, grow in and with it, and be fed by it. Trees are an image of growth and change, of deep roots and flexible branches. Throughout the Bible, trees are used in telling the story of God's redemption in many different places:

Wisdom: *They are like trees planted along the riverbank, bearing fruit each season. Their leaves never wither, and they prosper in all they do.* (Psalm 1:3)

Healing: *Fruit trees of all kinds will grow on both banks of the river. Their leaves will not wither, nor will their fruit fail. Every month they will bear fruit, because the water from the sanctuary flows to them. Their fruit will serve for food and their leaves for healing.* (Ezekiel 47)

Hope: *Out of the stump of David's family will grow a shoot—yes, a new Branch bearing fruit from the old root.* (Isaiah 11)

Jesus' death: *When they had carried out everything that was written about him, they took him down from the tree and laid him in a tomb.* (Acts 13:29)

Eternal Paradise: *On each side of the river grew a tree of life, bearing twelve crops of fruit, with a fresh crop each month. The leaves were used for medicine to heal the nations.* (Revelation 22)

Here at Roseville Lutheran, this Tree of Life will be our theme during Lent. These are the words that you will hear each week as we gather for worship: "Come and gather, beneath the tree of life, root of wisdom, branch of peace, fruit of healing and release. Come and gather, beneath the tree of life."

This Lent, in worship and in a **new Lenten Devotional**, we'll consider just what it means to gather around the tree of life. How God gives us life and hope and strength and deep roots of wisdom through this tree. We'll gather to see God's work in creation. We'll hear God's forgiveness proclaimed when Adam and Eve eat from the tree and then hide because of their sin. We'll see Jesus pray in the garden of olive trees with his friends. On Good Friday we'll keep vigil as Jesus dies on the tree and on Easter Sunday, we will celebrate the eternal hope given to us in the vision of the glorious new Jerusalem.

Come and gather, beneath the tree of life.



LENT AND HOLY WEEK SCHEDULE

ASH WEDNESDAY, MARCH 1

Worship at 5:00 and 7:00 pm

MID-WEEK LENTEN WORSHIP

WEDNESDAYS, MARCH 8, 15, 22, 29, APRIL 5

Worship at 5:00 and 7:00 pm

Soup Supper from 5:30 - 7:00 pm

PALM SUNDAY, APRIL 8-9

Regular Worship Times:

Saturday at 5:00 pm, Sunday at 8:00, 9:00 and 11:00 am

MAUNDY THURSDAY, APRIL 13

Worship at 11:00 am, 7:00 pm

GOOD FRIDAY, APRIL 14

Worship at 10:00 am, 7:00 pm

EASTER VIGIL, APRIL 15

Worship at 5:00 pm

EASTER SUNDAY, APRIL 16

7:00 am – Sunrise • 8:45 am – Traditional
10:00 am – Traditional • 11:15 am – Praise and Worship

WORSHIP WITH US EACH WEEK!

TRADITIONAL: 5:00 P.M. SATURDAY • CONTEMPLATIVE: 8:00 A.M. SUNDAY
TRADITIONAL: 9:00 A.M. SUNDAY • PRAISE AND WORSHIP: 11:00 A.M. SUNDAY

RLC NEWS and NOTES

RLC QUILTERS

The RLC Quilters' yearly report goes from January 1, 2016 to November 30, 2016, at which time we break for the Christmas holiday.

Last year we gave baby quilts, your quilts, lap robes, large quilts, and pillows to eight different organizations: United Hospital, Bridging, Rose of Sharon Care Center, Women's Care Center, Global Missions, Union Gospel Mission, Ramsey County Care Center, and more. A total of 341 quilts and 43 pillows were donated to these organizations.

We meet every week on Wednesday mornings (except December) from 8:30 am to Noon. There are many different jobs that need to be done to accomplish our goal of making quilts and pillows. Some jobs can be done sitting down, some standing up, and you don't need to know how to quilt to be welcome and useful in our group. If you can't join us in person, we are also in need of people to cut squares at home. We will supply all the materials. An added benefit is to work with a caring and fun-loving group of ladies, and a coffee break adds to the enjoyment.

We would like to send out a huge thank you to all of you who have supported us through the years with materials and donations, and especially to our much appreciated custodians, without whose help we could not carry out our mission.

We are not planning a quilt sale for a while, but do have quilts available to see on Wednesday mornings in the quilting room in Heritage Hall (basement level of original church) for anyone interested. For more information about our group or to purchase a quilt, please call Muriel Anderson 651-484-2660 or Virginia Cronin at 651-697-1856 or the church office.



THE POWER OF A NAME

Lauren WRIGHTSMAN, SENIOR PASTOR

In his series *Something to Think About*, James W. Moore writes about Dr. William McClain, Professor of Preaching and Worship at Wesley Theological Seminary.

Dr. McClain once told about meeting a South Korean tailor in Seoul, Korea. Amazingly, this South Korean tailor introduced himself as Smitty Lee. Dr. McClain was fascinated to discover a Korean named Smitty and he asked whether the name Smitty was a Korean name. The Korean tailor said, "No," and then he went on to tell the story of how his life had been saved some years before, during the Korean War by a courageous American soldier from Virginia who was called Smitty Ransom. The tailor went on to explain a rather familiar custom in that culture and he summed it up in two simple sentences, "He saved my life. I took his name!"

There is much here for a Christian to consider, for this is precisely what happens when we are baptized in Christ. Where we were once held in bondage to sin and death, Jesus tears down the veil and saves our lives, our very souls; freeing us from the power of sin, death and the devil. When we are baptized in Christ Jesus, we are no longer strangers to one another, but adopted children of God; namely, brothers and sisters in Christ Jesus.

Much like Smitty the tailor and his namesake, Jesus saves our lives and we take on his name. To be called a Christian is to be one who is of Christ, one who follows Christ, one who belongs to Christ, one who serves Christ and one who lives daily in the Spirit of Christ.

All of us hold power in the places in which we live, serve and work. We have the power to build up, or tear down. We have power to proclaim peace, or become vessels of hatred. We have power to love, or to cause separation and pain. We have power to heal, or the power to cause more pain.

As baptized Christians, we have power in the name that has been given to us, and as Christians we all bear the name of Christ. Christ. The one who saved each and every one of us. Christ. The one who proclaimed, taught and healed. Christ. The one who died in our name so that we may know life and live it abundantly.

As you go out in the world, do you bear this name proudly? Do you speak of justice boldly? Do you honor to all others the same forgiveness you received, to others around you?

This season, as we move closer and closer to the cross, may you remember that you have been named. May you remember that you have been claimed. May you remember the one who saved us, redeemed us and claimed us. "He saved my life. I took his name." Now, may we go forth bearing the powerful name of Christ!

In His Name,

Pastor Lauren J. Wrightsman



DO YOU HAVE A STORY TO SHARE?

If you have a story to share with the RLC community, contact Rick Abbott at 651-487-7752 or rabbott@rosevillelutheran.org. We are looking for stories about events at RLC, stories about your faith journey at RLC, and what being involved with the Roseville Lutheran community means to you. These can be short 3-sentence write-ups, a conversation that has many parts, or even a video.

RLC Lay Leaders and Staff

Pastors

Lauren Wrightsman, Senior Pastor
Sara Spohr, Associate Pastor
Dick Carlson, Visitation Pastor

Hospitality Ministry

Connie Marchio, Hospitality Manager
Colleen Hopple, Hospitality Assistant

Music Ministry

John Helgen, Director
Martha Mutch, Organist
Maddie Giordana, Music Associate
Kristina Olson, Youth Choir
Ariel Wilberg, Children's Choir
Lori Haaland, Handbell Choirs

Children's Ministry

Julie Hanson, Director of Children's Ministry
Tammy Heiple, PMO, Nursery Coordinator

Student Ministry

Michael Jordan, Director of Youth Ministry
Abby Matter, Director of Faith Formation

Facilities Ministry

Stephen Henry, Campus Manager
Arlen Rystrom, Building Engineer
Shelton Ingram, Custodian
Mary Jo Shaumburg, Custodian
Donovan Whitfield, Custodian
Jessica Hunt, Facilities

Ministry Support Staff

Dave Booms, Church Administrator
Laurel Hofeldt, Director of Finance and Data
Daniel Pederson, Communications Manager
Rick Abbott, Communications Specialist
Kay Berthiaume, Financial Assistant
Diane Daulton, Financial Assistant
Trish Clifford, Administrative Assistant

Child Care House

Sue Menier, Director
Shyama Dahal, Assistant

Endowment Committee

KJ Bach, Chair

Congregation Council

Sara Mohn, President
Jeff Johnson, President-Elect
John Shardlow, Vice President
Vanessa Anderson
Georgia Nygaard
Jake Von de Linde
Keith Gilbert
Joe Zeigler
Darci Bontrager

Nominating Committee

Mike McGregor, Co-Chair
Chris Smedsrud, Co-Chair

Ministry Team Chairs

Gena Mickley, Children's Ministry Advisory Board
Marlaine Maahs, Youth & Family
Jim Maahs, Youth & Family
Mary Erickson, Adult Education
Jane Lagerquist, Christian LIFE Co-Chair
Janet Risinger, Christian LIFE Co-Chair
Dave Tetzlaff, Mission & Outreach

RLC NEWS and NOTES

THE POSITIVE PRESENT

Sara MOHN, congregational president


With Lent on the horizon and the celebration of the Resurrection a promise in the spring, I find myself counting the increasing minutes of sunlight and am ever anxious for the warmth of the sun and vibrant colors of new growth. But even as I long for spring, I keep reminding myself of all the good of now. Roseville Lutheran is a huge part of that positive present and I am asking all of you to look up, talk to each other, and recognize the Gospel in action each day. As a congregation, we are doing good things.

In Luke 3, John the Baptist tells the crowd, “Anyone who has two shirts should share with the one who has none, and anyone who has food should do the same.” Project Home is a fantastic example of our community putting these words into action. This will be our third year of providing overnight housing and food to homeless families during the month of February. All volunteer slots were filled, reflecting our congregation’s embrace of this ministry. January 29 was our annual opportunity to serve Bridging as we built 53 dressers, and assembled 103 bath bundles and 99 kitchen bundles. In April, we will partner with Incarnation Lutheran Church again to pack thousands of Feed My Starving Children meals for the hungry. I was also inspired to hear Pastor Sara tell of her travels to our sister congregation in Tanzania and our important partnership there. It has been a full month of celebrating our outreach.

Our ministry is in action each day within our walls, too, as our community works to nurture and challenge the faith of all ages so that we can take our faith into our daily lives. Through worship, teaching, fellowship, and music, we come to RLC to fill ourselves up so we can pour ourselves out each week.

But, we need each of you to support our ministry with your commitment, engagement and financial support so we can continue to grow, so we can give. As is the perpetual reality for so many churches, our finances are again quite tight. We are into the second half of our fiscal year, and while our spending is nearly on track, our giving is behind. This is a trend we need to reverse to end our year on solid financial footing and sustain our ministry. As was part of our budget plan, we will be coming to you with our giving needs over the next months. Please consider supporting our ministry with generous and joyful giving.

We are emerging from our time of transition and the optimism for where we are heading is contagious. We have a fantastic Strategic Planning team in place and they are at work gathering input as we solidify plans for our future. Take time to plug in and get energized with us. I am so thankful to be part of this community of love as we continue to wrestle with how we can best live out our love and our faith.

In Christ’s love,

Sara Mohn

FOOD FOR THOUGHT

DICK CARLSON, VISITATION PASTOR

His Way For Me

A reflection by Gerhart Frost

The profoundest thing
one can say of a river
is that it’s on its way to the sea.

The deepest thought
one can think of a person
is that he or she is a citizen of eternity.

Moments and years,
years and moments,
pass like sea-bent streams.
And I? I’m carried by the current
of an all-possessing Love.
I’m on my way, God’s way for me,
so let it be.


This reflection speaks to the reality of the community faith here at Roseville Lutheran Church – the Body of Christ - here in this place. We are all growing from birth to death and in between carried by the current of God’s all-possessing love in Jesus Christ, and are called to share this love with each other and with the world.

Visitation Ministry here at RLC is the intentional focus of a Care Team and a Spiritual Team of fellow members who are committed to keep in touch with those in this church community needing assistance and support and/or are unable to come to worship.

Presently the Care Team (task-orientated team support) has 24 members and the Spiritual Team (bringing Communion, Scripture, and Prayer) has 7 members who are in touch with 35 fellow members in care centers, assisted living facilities or in their homes.

As we grow and age, if you or if you know of someone in our congregation that is in a situation where support is needed, please contact one of the pastors or the church office.

We need each other – may the Spirit of the Lord be our guide.


Pastor Dick Carlson

IS GOD CALLING YOU TO SERVE?

Like good stewards of the manifold grace of God, serve one another with whatever gift each of you has received. – 1 Peter 4:10

If you are wondering whether God is calling you to serve, well, He IS. That’s how this Christian-thing works. If you are wondering how you might serve, connect with a member of the RLC Nominating Committee. We can help point you in the right direction.

There are at least as many opportunities to serve as there are members in our congregation. Within the church, you can get involved through children’s and youth programs, or help plan and prepare for worship and prayer. We serve our local and global communities through mission, outreach and Christian life ministries. The strength of our ministries relies on people like you.

The Nominating Committee’s annual task is to identify church members to accept the torch of lay leadership that keeps our ministry lights burning bright. Chris Smedsrud is the Chair of this year’s committee, guiding and facilitating the selection process. Chris and his wife Trish believe an active role in the church is important to their faith. Their daughters, Marisa and Abby, have grown at RLC, eager participants in Cornerstone, musical productions, youth programs and Confirmation. “Roseville Lutheran is such a part of our family,” says Chris. “When I enter the doors on Sunday, it feels like home.”

The Nominating Committee is currently seeking ten members to serve on Church Council, or to lead one of our designated ministry teams. Even if you’re not ready to take on a leadership position, “feel free to reach out, we can talk through the possibilities, and find a place to use your gifts,” says Chris. “Take that first step, and trust God to take care of the rest.”

To “Answer the Call” to serve, visit our website: www.rosevillelutheran.org/serve or contact Chris at 612-250-6870 or ctsmeds@gmail.com.



Nominating Committee: Mike Tostengard, Mike McGregor, Dot Probst and Chris Smedsrud.

WIDOWS’ GROUP

The Rose Enkas widows’ group from RLC and the community provides support and fellowship at area restaurants. All widows are welcome to join. Call Kay Shurson at 651-766-6930 or Lori Bergman at 651-635-9563 for more information.

Saturday, March 18 at 11:30 am
Outback Restaurant - 2181 Snelling, Roseville

Saturday, April 8 at 11:30 am
Red Lobster - 2330 Prior Avenue, Roseville

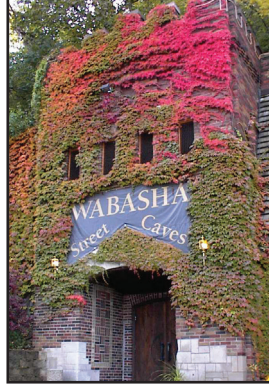
Saturday, May 20 at 11:30 am
Green Mill - 1000 Grams Road, Shoreview

LIFE MINISTRY • MUSIC

SWING DANCING AT THE WABASHA STREET CAVES

ALL-CHURCH LIFE EVENT - MARCH 16, 7:00 PM

Join us for a night of fun and excitement at Wabasha Street Caves (215 Wabasha St. South, St. Paul) Swing Night. A former speakeasy and gangster hideout, this unusual space is intriguing and a wonderful place to dance. This event is for all ages and all skill levels. Come out and enjoy swing dancing lessons or join the open dance time or just chill and enjoy the music. Even kids can take the group dance lessons. Scheduled live music performed by Beasley Big Bands, a 19-piece group, playing classic big band jazz. Cost is \$8.00 cash at the door. Clean shoes required. Doors open at 6:00 pm, live music 7:00 - 10:00 pm. Optional 40-minute history tour at 5:00 pm on Thursdays for \$6.



WE ARE THE CLAY POTTERY CLASS

LIFE EVENT - MARCH 25, 1:00 PM

Men and women are invited to Northern Clay Studio (424 E. Franklin Ave, Minneapolis) for "We are the Clay" Pottery Class. Our 3-hour class includes instruction from an accomplished Northern Clay Artist, and getting to throw 3-4 red clay pieces on a the pottery wheel, decorating and glazing our creations. We'll gather at the end for a snack. Artworks remain at the Clay Center to be fired and may be picked up at RLC the last Sunday in April. Space is limited to only 24 spots (2 studios of 12 artists) of beginners and intermediate learners. Cost is \$20 per person and signup now on the Roseville Lutheran website on the LIFE ministry page. We'll meet at church by 12 noon in the lower parking lot or at the studio in Minneapolis at 1:00 pm. Be ready to get your hands and clothes dirty! For more information, contact Jane Lagerquist at jglager@gmail.com or 651-698-9156.



PROGRESSIVE DINNER!

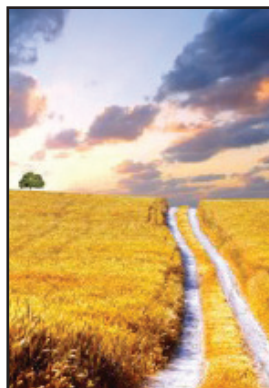
ALL-CHURCH LIFE EVENT - APRIL 1, 5:00 PM

You are invited to join us for an evening of great food, fun and fellowship at our 2nd annual Progressive Dinner! This is a great way to make some new RLC friends or to reconnect with old ones! During the evening you will journey to three different homes in Roseville to enjoy appetizers, a main course and dessert. All who participate will be asked to help provide food for one of the courses. We are still looking for a few more host homes. We will have multiple homes for appetizers and the main course, and then everyone will gather at a single home for dessert. Sign up on the RLC website or with Trish in the church office. Sign up deadline is Friday, March 24. Contact Jennifer Bergman at mn_bergman@msn.com or 651-249-3192 or Jill Lund at jillklund@aol.com with questions.

SWEET LAND, THE MUSICAL

ALL-CHURCH LIFE EVENT - APRIL 30, 2:00 PM

Join us at the MN History Theater for this all-church LIFE Event. A poignant, lyrical celebration of land, love, and the American immigrant experience. In 1920, Inge Altenberg journeys to America to marry a bachelor farmer, sight unseen. But in the wake of WWI, Inge's German heritage turns her new neighbors against the match. *Sweet Land* reminds us of who we are – and where we came from. Based from the book "A Gravestone Made of Wheat" by Will Weaver. There will be a post-play discussion at the theater, and you will have the option of going out for dinner afterwards. For more information, contact Jennifer Bergman at mn_bergman@msn.com. Tickets are \$35 and may be purchased online or from Trish in the RLC office by **March 29**. We have 25 tickets reserved. Tickets will be distributed in the theater lobby prior to the performance.



MUSIC NOTES

JOHN HELGEN, DIRECTOR OF MUSIC MINISTRY

RLC Festival Choir –Rehearsals Start March 22

Plan now to join the RLC Festival Choir and sing for worship on Palm Sunday, Good Friday and Easter Sunday – rehearsals begin Wednesday, March 22. It's a great way to get involved in singing without joining the choir full time. Rehearsal schedule as follows:

Wednesdays, March 22, 29 and April 5

REHEARSAL in the Choir Room from 7:45 to 9:15 pm

Palm Sunday, April 9

SING: choral warmup at 8:15 am, 9:00 am Palm Sunday worship

Wednesday, April 12

REHEARSAL in Worship Center from 7:00 to 9:00 pm

Good Friday, April 14

SING: rehearsal/warmup at 6:15 pm, 7:00 pm Good Friday worship

Saturday, April 15

REHEARSAL in Worship Center from 9:30 to 11:00 am

Easter Sunday, April 16

SING: choral warmup at 8:15 am, 8:45 and 10:00 am Worship

Upcoming Music Events – Winter/Spring 2017

Please make note of these free concert opportunities at RLC. Events have no admission charge – a free will offering will be collected. If you have not attended one of these free concerts before, please consider doing so!

7:00 pm, Friday, March 24

Minnesota Sinfonia – Jay Fishman, conductor

7:00 pm, Friday, April 21

River Heights Chorale – Aaron Kapaun, conductor

7:00 pm, Saturday, April 29

Minneapolis Youth Chorus – Patricia Arasim, conductor

7:00 pm, Saturday, May 13

Grand Symphonic Winds – Matthew George, conductor

4:00 pm, Sunday, May 14

Metropolitan Symphony Orchestra –William Schrickel, conductor

Get Connected with Music at RLC

If you have a musical gift you'd like to share at one of RLC's worship services, or would like to get involved in one of our many vocal and instrumental ensembles, we welcome you! Pianists and accompanists are especially needed, as well as other instrumentalists and vocalists. If you like to sing but can't commit to weekly rehearsals, consider the Festival Choir (sings for special events at Christmas and Easter – see article above). Contact John Helgen, Director of Music at 651-288-4236 or jhelgen@rosevillelutheran.org.

CHILDREN, YOUTH and FAMILIES

RECHARGED AT RLC!

*On January 7, three staff and seven volunteers attended **Recharge**, a one-day conference for Children, Youth and Family ministry in Eden Prairie. All that attended were indeed recharged! We heard uplifting and inspirational speakers, attended fascinating workshops and also had the opportunity to get to know one another better! We met to debrief the next day and learned that our volunteers in CYF really enjoy how they share their time with us! The following are four of their stories:*

CYF recharges me!

by Jess Henry

I've been a member of RLC for 30 years and I am a scientist in the field of transplant medicine. There are lots of ways to volunteer in Youth Ministry and I started out by singing in the youth worship band while I was in high school. I chaperoned summer trips while I was in college (yeah, Boundary Waters!) and I began leading a confirmation small group when I moved back to Roseville after college. Years later, I'm still a small group leader and I love it. Wednesday nights are a high point in my week - they bring a chance to learn, worship, and be in fellowship with youth and other adult leaders. Even if I've had a busy/stressful/crummy day, spending an evening at confirmation leaves me feeling recharged. Being a small group leader has helped me to learn more about my faith and become more diligent about applying it to my daily life. It's also been a fun way to get to know more of the great people at RLC. There are many different ways to share your time in the area of Children, Youth and Family Ministry at RLC - try some of them out and find one that you love!



HAVE AN IMPACT ON OUR YOUTH!

by Tana Bogenholm

I have been a member of RLC since 2004. I have been an educator for almost 30 years and 25 have been in the Roseville Schools. I've taught the spectrum in the public schools K-12, special education, gifted education and currently coordinate the AVID program that is for 1st generation college students. This is my 2nd year working in Youth Ministry at RLC as a confirmation small group leader. I grew up around camping ministry with my dad, a Lutheran minister, so youth ministry is a passion and it feels great to be a part of this!

Even though I feel I am a very busy mom, wife and work full time, I've wanted to be a leader for confirmation for several years and when my youngest son started confirmation last year, I thought it was great timing. My family knows how important this is to me.

Being a small group leader is rewarding in many ways. I look forward to coming every Wednesday; enjoy singing, hearing our message for the week and learning from my group. The 3-year commitment with my group is exciting and I hope to stay connected and continue to watch them grow as strong women of God. Growing in faith and sharing highs and lows each week is priceless. I admire my group's respect for each other and where they each arrived in their faith journey. Watching them becoming stronger, wiser and growing in their faith makes every week so special.

The commitment may seem to some like it would be too much. It is not. You will leave each week filled with so much more than you ever expected. It is a weekly time to reflect on your own faith and renew your commitment to Christ. You definitely don't need to be a teacher by training to have an impact on the kids you lead! If you feel that you can be a mentor, guide, faith leader and walk the walk with youth, you are needed. Students this age are exploring, challenging, and learning how to thread so many concepts and experiences into meaning. This is a perfect opportunity to have a dramatic impact on the faith foundations of our youth.

YOU CAN INVEST IN OUR YOUTH, TOO!

by Lilly Eldred

I have been a member of Roseville Lutheran since I was 6 years old. My mom decided that RLC had a lot to offer "her girls," and more closely aligned to her ideas on faith than our previous congregation. We jumped into Sunday school, summer camps, youth choir, and every activity that RLC offered.

I am now in my fifth year as an educator, and am currently a first grade teacher. On a professional level, volunteering with middle school and high school students helps me to know more about what my primary students might encounter in years to come. On a personal level, I am drawn to volunteering with our middle and high school youth by my own memories of growing up at Roseville Lutheran. A big part of what made RLC such an important place for me were the caring adults who volunteered (and worked) in the youth programming. I learned about singing in youth choir. I learned about camping and the Minnesota wilderness through our BWCA trips. I learned how to navigate the Bible and ask great questions in confirmation and Flock. I was a part of a positive and supportive community during those fragile years of adolescence. I want to give back, because I know how amazing it is as a youth to be surrounded by a community that cares.

As a youth, I was a "junior leader" on several trips and retreats, which helped me to see myself as a part of what made our youth program great. Since graduating from Luther College, I have made volunteering a priority. As a young teacher, I may not have large checks to write, but I can give my time. I first started teaching confirmation as a recent college grad, and it helps me to deepen my understanding of our faith and our Bible. I'm no expert, so I look at our lesson plans and do a little research so I know some context before teaching. We have co-leaders and short meetings right before each confirmation evening to clear up any questions that we have as leaders.

I have also chaperoned two trips to the BWCA, and the 2016 trip to Slovakia and Poland with our high schoolers. I plan to help chaperone the high school mission trip to Idaho this coming summer, too! These trips are amazing for disconnecting from technology, and really investing some time in faith and fellowship with our youth. They have such amazing ideas and stories to share when we all take time to listen to each other!

I work a lot, but I am blessed to have most nights and weekends free from work commitments. This has made volunteering with our youth once a week on Wednesday evenings fit into my schedule pretty easily for the last five years. I am also lucky to have a flexible summer schedule, so taking a week or two with our youth has been something that I look forward to! We are all busy. We all have a million things that we "should" be doing, but I can't think of anything more important than investing my time into the youth of our church.

You don't have to be a teacher, or have a degree in child psychology, or be a theologian to work with our youth programs! You need a little time, a big interest in listening to youth, a little bit of Bible knowledge, and the ability to join in on a lot of fun! It gives me energy and deeper understanding of what a faith community is all about when I spend time with our amazing youth.

WHERE IS YOUR PASSION?

by Darci Bontrager

I am an accountant at Thrivent Financial and have been a member at RLC for 13 years. I have one daughter, Emma, who is a junior at RAHS.

I began volunteering when Emma was in confirmation. I wanted to help but knew teaching was not my thing. I replied to an ask from Michael Jordan when he needed a volunteer to enter camp data into a spreadsheet. This was an easy thing for me to do and a huge help for Michael. I continue to help with spreadsheet-type activities, with fund raising, and most recently went through Peer Ministry training.

Recently, I spent the night during a youth leadership retreat and it was a truly uplifting experience to listen to Michael Jordan talk and listen to the youth on all subjects. I am truly thankful our youth feel comfortable with the Roseville Lutheran staff to ask tough questions and talk through tough situations. We truly have a talented staff.

I think it is important that our staff have plenty of time to spend with the youth and not get bogged down by things volunteers could be helping with. If you enjoy interacting with young people, a small group leader may be a perfect fit for you. If you like to organize, there are always opportunities with our fund raisers, gift card sales and many other type of activities. Maybe you like to cook? I know we are always looking for volunteers to provide lunch for the youth on Sundays. Our congregation truly values all of our volunteers that use their passions to help our youth grow in their faith.



FIND "STORIES" ONLINE

We're posting more stories on the website. Find them online at www.rosevillelutheran.org/stories. Read and learn more about RLC!



YOUTH MINISTRY

HIGH SCHOOL GRADUATES

Sunday, May 7 - Graduate Recognition

On Sunday, May 7, we will recognize all of our graduating high school seniors at the 11:00 am worship. Many of them have been Cornerstone shepherds over the years, led on the Youth Leadership Team, and volunteered countless hours here and on mission trips through RLC. There will be cake served throughout the morning in honor of these grads and their accomplishments. We invite all of you to join us as we pray for their continued success in their future endeavors as they complete this milestone in their journey.

SUMMER TRIPS AND EVENTS

Even though our weekly programs will be coming to an end in a few short months, summers at RLC are packed with exciting trips and events. If you missed the registration deadline in February to attend one of the five youth and family trips we offer throughout the summer, please contact Michael or Abby to see if there is still space.

As we did two summers ago, RLC will be able to host two Slovak students during the month of July. We're in the process of finding host families for these two students. The interest from the students in Martin, Slovakia to spend a month with us has grown exponentially since we traveled there last summer. These two Slovak students will join us on our Mission Trip to Idaho as well as our Boundary Waters trip. To help more youth meet and interact with them, we will be hosting several events for all high school youth.

JOIN THE FAMILY MISSION TRIP!

SPOTS AVAILABLE FOR JULY 20-23

There are spots available for the Family Mission Trip coming July 20-23! We'll be traveling to Madison, Wisconsin, where families will work alongside one another to serve the surrounding community and grow in faith. All service sites are tailored to different age ranges, so everyone in the family will have the opportunity to serve. The cost is \$130 per person. Please contact Abby Matter at amatter@rosevillelutheran.org if you want to join the fun!



WHAT'S HAPPENING IN CHILDREN, YOUTH AND FAMILY MINISTRY

Weekly Programs:

Sundays: Cornerstone, Luther League, Devos & Donuts, 11 & Lunch (two-year-olds – High School)
Tuesdays: FLOCK (High School)
Wednesdays: Confirmation (7th – 9th Grade)
Thursdays: Bagels @ Dawn (High School)

Special Events & Retreats:

March 8	No Confirmation (Spring Break)
March 31	9th Grade Confirmation Event
April 2 10:00 am	Serve Sunday: Sandwiches
April 8 9:00 am	First Communion Workshop
April 9 9 & 11 am	Palm Sunday – Palm Procession
April 12	No Confirmation (Holy Week)
April 13 6:00 pm	Seder Meal and First Communion
April 14 10:00 am	Good Friday Family Worship
April 16	No Programming (Easter)
April 19	Confirmation Fellowship Night
April 23	Last Day of 11&Lunch
April 26 6:30 pm	9th Grade Confirmation Rehearsal
April 30 11:00 am	Confirmation Sunday
May 3 7:00 pm	CYF FMSC Mobile Pack Event
May 7 11:00 am	Graduation Recognition Service
May 21	Last Day of Cornerstone, Luther League, Devos & Donuts
May 21 11:00 am	Cornerstone & Luther League sing at 11 :00 am Worship
June 12 – 16	Vacation Bible School



CONFIRMATION

Letters of encouragement to our confirmands

On Sunday, April 30 at the 11:00 am worship, we will witness 33 ninth graders publically affirm their faith. For those who have journeyed with any of these youth, we invite you to write letters of encouragement and congratulations for them. All letters submitted by April 19 to the RLC office clearly labeled with the confirmand's name will be included with each confirmand's certificate packet. Thank you for your support and prayers.

CONGRATS TO OUR GRADUATES

Thank you to our senior cornerstone shepherds

Please join us in thanking these outstanding young people for sharing their faith and their time to lead a Cornerstone group of kids! Many of these seniors have taught Cornerstone for a number of years. These young mentors show the kids the love of Jesus each week! They welcome and engage kids to learn more about our amazing and loving God and his son, Jesus Christ. They are great examples to the kids they lead. We will miss them, and wish them well in the next chapter of their lives!

We are delighted to present our Cornerstone Shepherd Graduating Class of 2017:

Hanna Devaney	2-year-olds
Taylor Brown Thunder	3-year-olds
Mackenzie Carlson	4-year-olds
Corrine Schmaedeke	4-year-olds
Abby Tetzlaff	Kindergarten
Olivia Schultz	1st Grade
Kailey Beer	2nd Grade
Alex Koncilja	2nd Grade
Leah Peterson	2nd Grade
Rachel Kirby	3rd Grade
Nicole Tetzlaff	4th Grade



The Graduating Senior Shepherds are (back row) Abby Tetzlaff, Nicole Tetzlaff, Rachel Kirby, Leah Peterson, Kailey Beer, (front row) Olivia Schultz, Corrine Schmaedeke, Taylor Brown Thunder, Mackenzie Carlson. Not pictured: Alex Koncilja, Hanna Devaney.

PORTICO SERIES

ADULT ED OPPORTUNITIES

APRIL 23, 30, MAY 7, 14, 21

Portico, an ELCA ministry, provides retirement/health-related benefits and services to those who serve through the Evangelical Lutheran Church in America. These sessions are a joint project of RLC Adult Education and Stewardship committees. See Page 12 for more information on these interesting classes set for Sunday mornings this spring!

CHILDREN'S MINISTRY

RLC PRESCHOOL TAKES WINTER BLUES AWAY

JENIFER JOHNSON, DIRECTOR

Our Preschool has been taking the Winter Blues away by doing a variety of fun activities. The first one – Embrace the Snow! We brought the snow and ice inside to learn more about our winter climate and what animals live in this type of habitat. We also went outside and played in the snow - we loved making Snow Angels!

The second thing we did was we brought the warm sunshine into our rooms and pretended we were at the beach! Finding shells, playing with coconut-scented playdough, and eating popsicles were some of our summer fun highlights.



Plus, we love sharing God's love. We are grateful that we could make Valentines for our friends and family. But we were especially glad we could brighten someone's day in Project Home at our church with Valentines.

Our Preschool is thankful to minister to our young students and families within our community. We love seeing the joy of God's spirit that shines through their play and friendships they build. If you have a preschool-aged child, or know of someone who does, we would love for them to join us next year at Roseville Lutheran Preschool!

We are accepting registrations for the 2017-18 school year. Students need to be 3 or 4 by September 1, 2017, along with being toilet trained. For more information regarding our preschool and registration, please go to our website at www.rosevillelutheran.org, or call Jen Johnson, Preschool Director at 651-488-6887.

Upcoming Preschool Events:

Mar. 6-10 - Spring Break - No School

Apr. 10-13 - Mom's Nights

May 17- Ice Cream Social

May 23, 24 - Trike Day and Last Day of School

VBS VOLUNTEERS

CAN YOU HELP JUNE 12-16?

We want VBS @ RLC to have a big impact on the kids that attend! Many of the kids that enroll are not from RLC, and it's a great opportunity to show how awesome our Children's Ministry is! To make VBS @ RLC the best it can be, your help is needed! If you are an adult or a youth... young or more mature... like crafts or lead games... small group leaders or behind the scenes.... making sets or making snacks.... There is a place to share your talents with us in VBS @ RLC! Contact Julie Hanson at jhanson@rosevillelutheran.org today!

PALM SUNDAY PROCESSIONAL

On Palm Sunday, April 9, all kids are invited to participate in a Palm Parade at the beginning of both the 9:00 and 11:00 am worship services. Gather in the Commons and follow as we wave palm branches in the Worship Center to celebrate Palm Sunday. If you are staying to worship during these times, your child can sit with you when the parade is over. If you need to leave after the parade, that is just fine!

FIRST COMMUNION WORKSHOP

APRIL 8 WORKSHOP, APRIL 13 SEDER MEAL CELEBRATION

If you have a child that is in 3rd, 4th, or 5th grade and feel they are ready to receive their First Communion, we are having a workshop for students and their parent(s) on Saturday, April 8 from 9:00 am - Noon. This workshop is offered once each year and is open to any child that a parent feels can understand what this Sacrament is all about, targeted toward 3rd grade and above. If you have an older child that has not yet gone through this, they are also welcome!

First Communion is celebrated with a symbolic Seder Meal at 6:00 pm on Maundy Thursday, April 13. Families of those receiving their First Communion are invited to this Seder Meal, including baptismal sponsors, grandparents, etc. This symbolic meal is representative of Jesus' Last Supper. When the Seder Meal is completed, families will enter the Worship Center for Maundy Thursday worship at 7:00, where they will receive communion as a family. Sign up for the Seder Meal is part of our First Communion Workshop registration on the RLC website. Go to *Ages and Stages* tab at the top, then Children's Ministry. More information will be sent out specifically to families of 3rd, 4th and 5th graders in the coming weeks with an online sign up.



SEDER MEAL VOLUNTEERS NEEDED

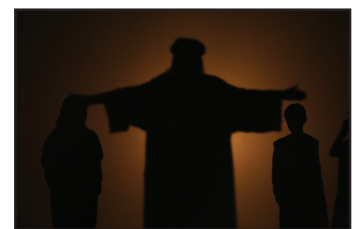
CAN YOU HELP APRIL 13?

Several people are needed to help plate and serve the Seder Meal for our students receiving their First Communion and their families. This is a very special evening for these families. Come be a part of this event by sharing your time! If you are available to help on Thursday, April 13 from 3-6 pm, please contact Julie Hanson or Abby Matter via the church office.

FAMILY GOOD FRIDAY WORSHIP

10:00 am, GOOD FRIDAY, APRIL 14

This year we will portray the last days of Jesus' life in a shadow play as part of our Family Good Friday Worship on April 14 at 10:00 am in the Great Hall. Invite your neighbors and friends to this kid-friendly worship service with a craft project to follow. If your student would like to be a part of this service, please contact Julie Hanson.



VBS @ RLC - "MAKER FUN FACTORY"

VACATION BIBLE SCHOOL IS JUNE 12-16. REGISTER TODAY!

Imagine a world where curious kids become hands-on inventors who discover they're lovingly crafted by God! Maker Fun Factory will spark imagination and engage kids in learning hands-on how much God loves them! Kids 3 years-old through the completion of 4th grade are invited to VBS @ RLC from 9:00 am - 12 Noon, June 12-16. Register online today for Vacation Bible School at RLC! Register by May 1 and get a t-shirt!



CAMP SALIE

A FIRST CAMPING EXPERIENCE FOR KIDS JULY 11-13

We offer an opportunity in July to allow kids completing grades 2-4 to experience camping for the first time in a setting that is close to home, located north of the Twin Cities, near Wyoming, MN. Up to 15 boys and 15 girls are welcome to enjoy Bible study, devotions, crafts, music, campfires, and awesome food together with RLC youth counselors and adults. It was a rewarding and very successful "first experience" for the kids! Camp Salie will be on July 11-13, meeting at Camp Salie at suppertime on July 11, and finish at supper on July 13 to accommodate parents and their work schedules! To register and get more information, go to the RLC website, under the Ages & Stages tab, under Children's Ministry, and Summer Opportunities.

ADULT EDUCATION

ROOTED IN GRACE - GROWING IN FAITH

As you therefore have received Christ Jesus the Lord, continue to live your lives in him, rooted and built up in him and established in the faith, just as you were taught, abounding in thanksgiving.

– Colossians 2:6-9

RLC has a rich tradition of Adult Education and Bible Study. We will be continuing the tradition with the theme "Rooted in Grace – Growing in Faith." The 10:10 Faith and Fellowship hour will continue with:

Martin Luther and the Reformation

10:10 am Sundays in March

In this four-part series, Dr. Mary Jane Haemig returns to RLC to discuss Martin Luther and the Reformation.

March 5

"Luther in his Time"

An introduction to Luther's life and times

March 12

"Luther's God – a Breakthrough Rediscovery"

A look at Luther's Reformation breakthrough and what was so revolutionary about his way of thinking about God and how God relates to us.

March 19

"Luther's Greatest Hits"

A look at some of Luther's most popular writings as well as at the whole matter of Luther as a publishing and publicity phenomenon.

March 26

"Luther and His Enemies"

A look at Luther's enemies including the Jews, the Turks, the Papists, and the rest.

The Passion and Death of Jesus: One Jesus, Four Gospel Stories

10:10 am Sunday, April 2

Led by Dr. Jim Boyce

The story of the Passion and Death of Jesus has captured the hearts of Christians for thousands of years as they have followed Jesus' journey to the Cross and Easter. The four gospels have even sometimes been called passion narratives with an extended introduction. Yet each of the four gospels tells the story differently. In this session, we will explore the distinctive motifs that give each gospel its own particular focus on Jesus' passion and death.

Re-membering a Story : Lutherans and Catholics Commemorate the Reformation Together

10:10 am Sunday, April 9

Led by Dr. Dirk G. Lange

The document *From Conflict to Communion*, as well as the liturgy of the Common Prayer were the basis of the Joint Commemoration of the Reformation in Lund, Sweden on October 31, 2016. We will explore why Pope Francis wanted to commemorate the Reformation with the Lutheran World Federation and how this ecumenical gesture impacts us in our Lutheran parishes.

PORTICO EDUCATION SERIES

Portico, a long-standing ELCA ministry, provides retirement- and health-related benefits and services to enhance the well-being of those who serve through the Evangelical Lutheran Church in America. These following sessions are a joint project of RLC Adult Education and Stewardship committees.

That You May Be Well

10:10 am Sundays, April 23, 30

Led by Deacon Tammy Devine

Come and claim our call from the waters of baptism to live well as whole people of God. Using scripture, the ELCA Wholeness Wheel, prayer practices, and conversation, you will be invited to discover what God might be nudging you to attend to on your own journey to living well. Facilitated by Deacon Tammy Devine, ELCA Wellness Manager, who serves the church through Portico Benefit Services.

Living From Our Strengths

10:10 am Sundays, May 7, 14

Led by Deacon Tammy Devine

God has gifted each of us uniquely. During these two sessions, we will discover together our top strengths. *Dependable Strengths* is a tool that uses story, "good experiences" and the gift of listening for strengths in one another. Together we will help each other identify their top 5 strengths. Facilitated by Deacon Tammy Devine, ELCA Wellness Manager.

Financial Well-Being

10:10 am Sunday, May 21

Led by Deacon Terri Endres

Living well financially means a life aligned with our values. Using Behavioral Finance, we will gain understanding on the impact our emotions have on our financial decisions, identify how to align our values with our financial decisions and learn how to begin to change "beliefs" that do not help us meet our financial goals. Facilitated by Deacon Terri Endres, Portico Regional Representative for Region 3 of the ELCA.

PASTOR'S BIBLE STUDY

THE RETURN OF THE PRODIGAL SON BY HENRI NOUWEN

Wednesday and Sunday mornings in March and April

9:30 am, Wednesdays, March 1, 8, 15, 29, April 5 in Room 40

10:10 am, Sundays, March 5, 12, 19, April 2, 9 in the Lounge

The Return of the Prodigal Son, by Henri J. M. Nouwen describes a spiritual journey taken by the author that began when he viewed a reproduction of Rembrandt's painting of the same name. This study will lead us through Nouwen's book as we examine the themes and personalities of the parable, using the painting by Rembrandt as an inspiration. With Nouwen, we will dig deeply into the parable and explore such themes as loss, rejection, homecoming and God's love for us.

Reading the book is strongly suggested. *The Return of the Prodigal Son: A Story of Homecoming*, by Henri J. M. Nouwen. Books are available for \$10.00 if you pre-order through the church office by Sunday, February 26. Sign up online or at the Welcome Desk after worship. Extra copies will be available on the first day of classes.



RETREAT

RACIAL JUSTICE

in our community

8:45 am - 12 NOON, MARCH 4

Have you ever wondered how RLC can serve all of its neighbors and be the presence of Christ's love in our community? What exactly should the role of our congregation be – to ensure that all of God's children are met with dignity, fairness, and compassion? How can we truly understand the root causes of deep racial and cultural divisions in our community and respond accordingly?

In response to these important questions, RLC has been hosting the reading circles "Our Neighbors and Me" in February and March. Each of the three groups has met weekly to discuss selected essays from "A Good Time from the Truth: Race in Minnesota," a recently-published anthology of writings from a diverse group of Minnesota authors.

As part of this series, Dr. Karen McKinney, Professor of Biblical Studies at Bethel University, will lead a church-wide retreat on Saturday, March 4, from 8:45 am – 12 noon. Dr. McKinney will facilitate an anti-racism workshop that will clarify the role of Christians in racial reconciliation at this important time.

Please sign up for this retreat at the Welcome Desk or call the church office. You do not need to have been in the book discussion groups in order to attend.

MISSION and outreach

MISSIONARY IN MEIGANGA, CAMEROON

RLC SUPPORTS REV. DR. ELISABETH JOHNSON

RLC is honored to support the work of ELCA Missionary the Rev. Dr. Elisabeth Johnson who serves as a seminary professor at the Lutheran Institute of Theology in Meiganga, teaching students preparing for service as pastors and leaders in the Evangelical Lutheran Church in Cameroon and other countries in western Africa. She also assists in providing continuing education opportunities within the church in Cameroon and in creating networks and connections between the Theological Institute and other global theological institutions.

Walking and working together, we seek to accompany our companions. Accompaniment is defined as walking together in a solidarity that practices interdependence and mutuality.

Rev. Dr. Johnson shares: "Simon-Pierre (center) is one of the students whose thesis I directed, and he received the highest grade ever given for a thesis at the Institute! His topic was "God and the Stranger," a work of biblical theology in light of the situation of Central African refugees in Cameroon. At right is his assessor and the Dean of the Institute, Dr. Jean Koulagna."



COINS FOR KEYSTONE

"Clink! Clink! Clink!" go all the coins at Roseville Lutheran. In previous years, the coins in the Sunday offering plate have gone to ELCA World Hunger. But as the staff and lay leaders continued to see the need in our community, RLC has decided to have all coins donated to our local partner – Keystone Community Services.



Keystone is a multi-service organization providing services to youth, senior, and basic needs programming. Keystone Community Services supports people in need with a variety of services to accomplish the following:

- Youth can receive after school programming, academic tutoring, youth employment and culturally specific programs designed for immigrant youth.
- Families and individuals become more self-sufficient, stable and connected to their community through support from food shelves, crisis assistance, case management and family programs.
- Seniors remain independent and contribute to their communities by accessing active senior, volunteer, in-home support and case management programs.
- Community members connect to their neighborhoods and contribute to the vitality of St. Paul by volunteering, participating in community events, and supporting their neighbors in need.

Through all of your generous giving and the focus on coins this year, RLC has raised \$979 for Keystone since last September!

Thank you for all of your giving! You can see the great work Keystone is doing at www.keystoneservices.org.

EVERY DROP COUNTS!

CENTER FOR CHRISTIAN EDUCATION IN SLOVAKIA

"For 40 years, due to the Communist regime, people in Slovakia could not freely adhere to Christian principles, let alone acknowledge Christian education as an important value. The life of the Church was narrowed to ministry by pastors only. Lay ministry was unwelcomed and any efforts in the area of church growth were stopped radically. Due to the damaging effects of Communism on people's belief system, many families have almost completely wandered away from the church. Spiritual poverty and lack of values had become a common feature in many lives."

– Bohdon Hrobon, President of CCE.

Roseville Lutheran Church has a strong tie with the Center for Christian Education in Martin, Slovakia. We have had ESL, VBS, Builders teams, and student exchanges going on since 2004. Now the school is in the process of remodeling a building that will allow the school to grow. This summer, two youth from Martin will spend a month with RLC youth!

We understand Christianity's role in this world to be down-to-earth... that means our ministry is not bound within the church nor school limits, but has to be bridged with civil society. That means you sometimes need to get your hands dirty, and it might, or rather it will, cause you some discomfort and pain. We offered this experience and valuable lesson to our high school junior/senior class, as some of the students are now over 18 and thus eligible to donate blood. Juraj Borcovan, who has been teaching at the school for over a decade, said, "I have learned that when working with youth and when sharing the Good News (and when donating blood), every drop counts..."



SERVE SUNDAY APRIL 2

WE'RE MAKING SANDWICHES! 10:00 - 11:00 am

Roseville Lutheran Church is once again making sandwiches for the homeless on Sunday, April 2, from 10:00 - 11:00 am. They will be shared locally through 363 Days Ministries and Allan Law. We plan to make 1,000 sandwiches on April 2! If you would like to donate supplies for this event, please contact Julie Hanson at 651-487-7752, or jhanson@rosevillelutheran.org. Thank you!



READ OUR 2016 LENTEN DEVOTIONAL ONLINE

The season of Lent is here. We will gather in word, in worship, and by the power of the Holy Spirit beneath the tree of life. The tree of life is an image of healing and hope. It is an image of strength and nourishment.

This year at Roseville Lutheran we will offer an online devotional during Lent. You can follow it on our website at www.rosevillelutheran.org/devotional or on our Facebook page. You can request a printed copy by calling the church office at 651-487-7752.

CHECK OUT OUR WEBSITE
WWW.ROSEVILLELUTHERAN.ORG

MISSION and OUTREACH

BEGA KWA BEGA

Tanzania MISSION in Prayer, Presence and Projects

RLC's global mission outreach in Tanzania formally began in 2002 when our congregation was paired with the Lutheran parish in Ng'ang'ange, a small rural village in the southern Tanzania. This is part of the Saint Paul Area Synod's *Bega Kwa Bega* program in which RLC is one of 70 Twin Cities churches in similar companion congregation relationships.

Bega Kwa Bega is a joint ministry between communities of faith here in Minnesota and in Tanzania, whose purpose is to proclaim the Gospel of Jesus Christ, to extend Christian hospitality, and to strengthen relationships with one another through the shared practices of prayer, presence, and projects.

Prayer, with and for one another, shapes the heart and soul of our relationship with our brothers and sisters in Tanzania.



Presence (the act of being present) helps us grow closer to God and one another through the intentional exchange of people, stories, and shared experiences across continents and cultures. RLC members and staff have traveled to be present with the Ng'ang'ange parish on four separate occasions, and future trips are planned.

Projects are mutually pursued activities with an eye to proclaiming God's presence in both word and deed. Examples include RLC's funding of construction materials for church buildings in Ng'ang'ange and providing student scholarships for parish members.

PROJECT HOME

As this article is written, Project Home is just getting underway, welcoming 6 families: 6 adults and 13 children ages 9-16 (expecting a few more through the month) and shared our space and hearts with them for the month of February.

Thank you to the 151 wonderful volunteers who interacted with our families each evening and overnight; provided fruit, treats and birthday cakes; helped with move in/out; lent us furniture; helped with sign-up; provided welcome baskets, musical and other entertainment; and served a special Valentine's Day dinner. Thanks to those of you who generously made a financial donation, anonymously donated food items and/or gave to "Project Home Undercover." Thanks to our youth and Cornerstone kids who decorated the guest space with pictures and words of encouragement. Thanks to our awesome staff members who managed the day to day logistics of space, supplies, cleanliness, communications, administrative help and the myriad other things behind the scenes.

Thanks to our members who supported this ministry with their prayers. It truly "takes a village" and we couldn't continue this important ministry to homeless families without each and every one of you!

Oh, and did we say, "Thanks!"?



DRESSERS, BATH BUNDLES, KITCHEN BUNDLES AND CLEANING KITS...OH MY!

January BIG wrap and Dresser BUILD a success

Serving Others at RLC was the theme during the week of January 23! Through the generosity of many, Confirmation kids built 23 dressers during their time together on Wednesday night, and others helped construct 30 more dressers on Sunday during the 10:00 hour. People worked side by side to assemble 53 dressers, 108 bath bundles, 99 kitchen bundles and 25 cleaning kits to benefit the clients of Bridging. We had extra hand towels and washcloths that were also donated to Bridging and to Project Home for their use.

Bridging is a local organization that helps families and individuals move into a home for the first time by supplying donated furniture, household goods, bedding, towels and now cleaning kits. Wendy Erickson, volunteer coordinator from Bridging, talked to the congregation to share her appreciation for the wonderful relationship RLC has had with Bridging. The clients of Bridging will be blessed by RLC's generosity! Thanks to all who donated toward this project and who participated! If you would like to volunteer at Bridging, or support them with your donations, find more information on their website, www.bridging.org



RLC MISSION AND OUTREACH RECOGNIZED WITH AWARD

2016 COMPASSION IN ACTION AWARD

The Mission & Outreach Committee and the entire congregation of Roseville Lutheran Church were recently recognized by MORE, an organization helping refugees and immigrants with education and support, with a special award.

MORE presented Karen and Dave Dudley, of Roseville Lutheran Church, and the M&O Committee with the 2016 Compassion in Action Award, the very first time they've awarded the honor.

Over the past three years, RLC has provided volunteers and school supplies for MORE classrooms, supported the December Gift Giveaway, worked with a group of quilters whose works were distributed through MORE's Basic Needs services and donated \$8,000 through general offerings.

In their announcement of the award, MORE said RLC is a "special community partner that has gone above and beyond in supporting MORE's mission and work."

"Serving their community means answering the call to care for those who are hungry, who need clothing or shelter, or who are sick, whether they live next door or far away."

MORE has a longstanding commitment to focusing its efforts on services targeting New Americans in these areas:

Economic Opportunity and Security
English Education/Workforce Readiness
Strong Human Services and Family Support

Learn more about MORE on their website at www.more-empowerment.org.



WE WANT TO HEAR FROM YOU!

Share YOUR STORY ABOUT RLC

If you have a story to share with the RLC community, contact Rick Abbott at 651-487-7752 or rabbott@rosevillelutheran.org. We are looking for stories about events at RLC, stories about your faith journey at RLC, and what being involved with the Roseville Lutheran community means to you. These can be short 3-sentence write-ups, a conversation that has many parts, or even a video. Let us know today if you have a story, or an idea for a story. Do you have any photos to share?

RLC NEWS and NOTES

FINANCE OFFICE

Laurel HOFELDT, DIRECTOR OF FINANCE & DATA

Roseville Lutheran Church is a vibrant, exciting, and giving congregation. For 75 years members and friends have given time, talent, and gifts to ensure that each future generation has the resources to learn, share, and grow in God’s love. Over 95% of our ministry is funded by your generous financial gifts. Thank you!

Giving to our ministry plan is \$26,459 less than we had budgeted as of December 31, 2016. Total year-to-date expenses exceed receipts by \$13,575 at the end of the 2nd quarter of the fiscal year. The

budgeted year-to-date surplus is \$16,206, meaning we are \$29,782 below our expected position at the end of December. Monthly financial summaries are available online at www.rosevillelutheran.org.

Prayerfully consider what RLC ministries mean to you and your family and how you will continue to support the vision God has laid before us.

If you have questions please contact Laurel Hofeldt at lhofeldt@rosevillelutheran.org. To give online, visit www.rosevillelutheran.org and click on the Giving button.

VOLUNTEER OPPORTUNITIES

LENT • HOLY WEEK • EASTER

Did you know it takes up to 36 volunteers to aid in any one service with communion? Who are they? They are our ushers, greeters, communion servers, altar guild, readers and others. And this does not include all those who assist RLC with their musical talents. Because of the additional services over Lent, Holy Week, and Easter we need not only our routine volunteers but also others who wish to provide inspiration and service with a smile and an enthusiastic attitude. Please contact the church office at 651-487-7752 or stop by the Welcome Desk to sign-up.

Roseville Lutheran Church

December 2016 Month-End Financial Summary

Church Operations 2016-2017						Prior Year	
	Dec Actual	Dec Budget	YTD Actual	YTD Budget	YTD Variance	2015 Dec Actual	2015-2016 YTD Actual
Offering	190,057	189,271	729,028	755,488	-26,459	180,542	700,099
Other receipts	8,798	7,705	39,552	42,597	-3,044	7,673	50,186
Total Receipts	198,855	196,976	768,581	798,084	-29,504	188,215	750,285
Expenses	146,718	144,816	782,156	781,878	278	129,942	721,432
Net	52,137	52,160	-13,575	16,206	-29,782	58,273	28,853

Number of Givers 2016-2017					Prior Year	
	Dec (4 Sundays)		YTD through Dec		2015-16 YTD Thru Dec	
	# Givers	Avg Gift	# Givers	Avg Gift	# Givers	Avg Gift
General Fund	507	\$ 303	719	\$ 947	729	902
Bldg Designated	87	\$ 152	135	\$ 410	134	316
Christmas Offering	239	\$ 146	240	\$ 146	312	156
M&O	15	\$ 51	108	\$ 296	114	288
Memorials/Estate	6	\$ 45	51	\$ 112	53	1,754
Other Designated	82	\$ 113	115	\$ 475	117	112
EF/Love Lights	86	\$ 42	112	\$ 52	78	56
All Other	0	\$ -	0	\$ -	13	146
Total	645	\$ 334	822	\$ 1,058	836	1,078

Fund Balances 12/30/2016		
Available Cash & Short-Term Investments		468,856
Designated/Restricted Funds:		
Building Fund	86,296	
Building Fees	23,320	
Mission & Outreach	47,955	
Kitchen Fund	97,148	
Memorials	33,327	
Estate Gift	54,500	
Matching Gifts	4,500	
Other Funds	99,770	
Total Designated/Restricted	446,817	
Child Care:	Current Yr	18,212
Preschool:	Current Yr	6,318
Operating Fund:	Current Yr*	-13,575
*Cumulative Operating Fund Surplus as of 6/30/16 = \$4,767		

Endowment Fund		
Cash	9,138	
Investments	441,733	
Total	450,872	

LENTEN SOUP SUPPERS

5:30 - 7:00 PM WEDNESDAYS

MARCH 8, 15, 22, 29, APRIL 5

Buffet service will be 5:30 - 7:00 pm with two varieties of soup served at each supper. Beverages: coffee and water. Cost is \$7.00.

March 8 – chicken wild rice soup and veggie soup, spring mix/Caesar salad, dessert: everything chocolate

March 15 – split pea soup and tomato basil soup, spring mix/potato salad, dessert: all about the green

March 22 – beef chili and butternut squash soup, spring mix/pasta salad, dessert: cookies and bars

March 29 – chicken noodle soup and loaded baked potato soup, spring mix salad/fruit display, dessert: build your own ice cream bar

April 5 – veggie beef soup and corn chowder soup, spring mix salad/coleslaw, dessert: candy dream land

GRIEF SUPPORT

GROWING THROUGH LOSS

APRIL 17 - MAY 22

The North Suburban Grief Support Coalition sponsors the *Growing Through Loss* series twice yearly, providing an opportunity to get information and support for a variety of loss and grief issues. The six-week series for adults will be held from 6:45 – 9:00 pm on Mondays at the Abiding Savior Lutheran Church (8211 Red Oak Drive, Mounds View, MN 55112) April 17 - May 22.

Registration takes place at 6:45 pm each night, and presentations begin at 7:00 pm. Each session is complete in itself. You are welcome to attend one or all. Donations are welcome, and childcare is available upon request.

For further information, visit their website at www.growingthroughloss.org or call their hotline at 763-755-5335

SIMPLY GIVING

An easy, Generous CHOICE

The Simply Giving Program is a simple, reliable way to make your regular contributions to the congregation through automated giving.

Contact the church office for more information.

RLC NEWS and NOTES



SHARE A STORY!

Roseville Lutheran's 75th Anniversary theme, *Remember+Rejoice*, is all about recollecting and looking forward with hope. You're an integral part in helping us tell the story of where we've been and where we're headed!

Do you have memories of moving or joyful events or experiences in your time here at RLC? Or do you know someone who might make a great addition to our storytelling efforts? Please consider sharing with us as we embark on a year-long effort to illustrate the collective memory of our congregation and our vision for the future.

Bud Helmen, an RLC member since 1954, recently sat down with members of the Anniversary Steering Committee to talk of just a few of his memories. Bud shared an inspiring story of the first Easter Sunday service in the 1969 sanctuary. Find a short video at www.RosevilleLutheran.org and see how you can share your story or help point us toward one.

You can also share photos from any period of RLC's existence, from weddings, baptisms, confirmation, dinners, or any other events. Bring them into the church office, where they'll be carefully scanned, or email them to rabbott@rosevillelutheran.org. If you'd like more information about our storytelling efforts this year, please contact Rick Abbott, RLC Communications Specialist, at 651-288-4222.

ALL HANDS ON HOPE! MAY 1-4

2017 Feed My Starving Children Mobile Pack

Roseville Lutheran is once again planning to join our friends at Incarnation Church in Shoreview to pack meals for Feed My Starving Children. The 2017 dates are Monday, May 1 to Thursday, May 4. Online sign-up will begin Ash Wednesday, March 1. It isn't too early to start planning.

While many of us have not experienced real hunger, or hunger being the norm, there are kids around the world who ONLY know hunger. Hunger can hinder and permanently damage physical, social and physiological development. We can make a difference. Our efforts together WILL change lives and communities. FMSC is a responsible organization that transforms the communities that partner with them.

The beauty of these Mobile Packs is that the volunteers contribute both time and money. At the end of this Pack, there will be 750,000 meals (at a cost of 22 cents a meal) ready for shipment, paid for and packed. That will feed 2,055 kids for a year.

Let's come together as a congregation, as a group within our congregation, as a family, or as an individual. Begin organizing groups now! It is a wonderful team building activity. You can sign up online at www.rosevillelutheran.org/fmsc starting March 1. Money can be donated any time. Please direct any questions to John Shardlow, Kathy Miller or Jennifer Bergman. Thank you and God bless you.



2017 LENTEN DEVOTIONAL

The season of Lent is here. We will gather in word, in worship, and by the power of the Holy Spirit beneath the tree of life. The tree of life is an image of healing and hope. It is an image of strength and nourishment.

This year we will offer an online devotional during Lent. You can follow it on our website at www.rosevillelutheran.org/devotional or on our Facebook page. You can request a printed copy by calling the church office at 651-487-7752.

RLC KITCHEN REMODELED - MARCH 12 OPEN HOUSE!

CONNIE MARCHIO, HOSPITALITY

We've completed remodeling work in the kitchen at RLC and it's time for an Open House! Join us Sunday, March 12, from 8:30 am - 11:00 am and get a tour of the shiny new facilities.

There were many details that went into this job, here are just a few:

- Prior to proceeding with the kitchen remodel I spent many hours trying to keep within our budget (as projects like this have a tendency to have surprises!) and we were successful!
- Along with the plan, we needed permits in place, and had to attend to some abatement issues, this was done in early August.
- Then on to painting; prep tables and our new flooring arrived and was installed mid-August.
- Beautiful new stove, convection ovens and 2 new coolers arrived and were installed.
- We demoed the kitchen doors and slide down windows, then out with the old cabinets and drawers! New cabinets were fabricated and installed mid-January.

A special thanks to Steve Henry for guiding me through all the electrical and plumbing concerns, as well as for all the work he did to keep this kitchen remodel going. I could have not done this without him. As always, my thanks to Colleen (who settled me down while talking to contractors!). She's been a dream to work with. Thanks for your patience!

